

EU07/12

Unemployment in Tyne & Wear: November 2007

Published: December 2007

In Tyne & Wear in November 2007 the main features were:

- 20,963 people, 4.4% of the labour force, claimed unemployment benefits (Table 2).
- Claimant unemployment count statistics for current (2004) wards are provided in Appendix 1.
- In the month to November, **the unadjusted claimant count fell in Tyne & Wear (-225, -1.1%), regionally by -0.1%, and in the UK by -1.9%**. (Table 2). The claimant count fell in three of the five districts of Tyne & Wear. The fastest fall was in Gateshead (-141, -4.4%), with the slowest in North Tyneside (-92, -2.8%). It rose in South Tyneside (+132, +3.6%) and Sunderland (+35, +0.6%).
- **The claimant count, compared to a year ago, is lower locally, regionally and in the UK.** Compared to a year ago, the claimant count is -8.8% (-2,013) lower in Tyne & Wear [this is opposite to the upward trend from autumn 2004 to autumn 2006], -8.4% lower in the North East and -14.8% lower in the UK. At Tyne & Wear district level, the claimant count is lower in all five districts. The greatest fall was in Gateshead (-387, -11.2%) and the lowest in Sunderland (-381, -6.4%) (Table 2). [The claimant count in Tyne & Wear was within 700 of the low-point reached in September 2004, which was 20,295-Ed.]
- **The North East seasonally adjusted claimant count fell to 47,500 in November, over the year** (Table 1). The North East has the highest regional rate in the UK (3.8%). The South East and South West have the lowest regional rate (1.5%). The claimant count rate remained stable in all Government Office Regions in the month to November, except the West Midlands (-0.1%). (All seasonally adjusted).
- **The UK seasonally adjusted claimant count fell during November.** The number of people out of work and claiming benefit fell by -11,100 (-1.3%). Compared to a year ago, the UK seasonally adjusted claimant count is -134,200 lower (down -14.2%). The UK seasonally adjusted claimant count rate is 2.5% (Table 1). *Note: seasonally adjusted claimant count data in this broadsheet are provisional and are revised by ONS the following month.*

Labour Force Survey (LFS) Estimates

Labour Force Survey (LFS) estimates, particularly for the North East and Tyne & Wear, are subject to sampling variability*. The following therefore gives the *probable* direction of change. Over the year to October 2007, in the North East the LFS indicates that “the trend in the employment rate may be starting to increase,” up 1.0pp on the year at 71.9%. “The trend in the unemployment rate may be starting to decrease,” with the North East rate in the quarter to October 2007 at 5.8%, down 0.9pp on a year earlier.

In the UK the LFS shows an increase in the number of people in employment (up by 114,000 over the quarter to October) and the employment rate is also increasing (74.5%). The number of workforce jobs in the UK was up in September 2007 by 287,000 on a year earlier. (The sector with the largest annual increase was in Finance & Business Services, up by 201,000). The UK unemployment rate in the 3 months to October 2007 was 5.3%, down 0.2 percentage points from a year earlier. This is not significantly different from a year ago. (*95% of estimates of UK rates will be within +/-0.2 percentage points of the actual unemployment rate and in the North East +/-1.3 percentage points of the actual rate).

12-month averages from the Annual Population Survey (APS) give more robust unemployment rates. **In Tyne & Wear for the 12 months to March 2007, estimated ILO unemployment of 36,600 or 7.4% (unadjusted)** (Table 5). **Young people aged up to 24 account for over two-fifths of all unemployed people, with an unemployment rate of around 15%.** (Appendix Table 2.1).

CLAIMANT COUNT UNEMPLOYMENT

The claimant count reports numbers qualifying for benefits as a result of unemployment and is subject to the associated administrative system.

Table 1: Change in Total Claimant Count: Seasonally Adjusted*: November 2007

(Workforce rates)[#]

	Total	Rate %	Change since previous:			
			Month	%	Year	%
North East Region	47,500	3.8 (w)	-400	-0.8	-3,900	-7.6
Great Britain	789,700	2.5 (w)	-11,200	-1.4	-130,300	-14.2
United Kingdom	813,000	2.5 (w)	-11,100	-1.3	-134,200	-14.2

Source: Office for National Statistics

Notes: * The seasonally adjusted series takes account of previous changes which have affected the unemployment count so that the whole series over time is consistent with current figures. Seasonally adjusted figures are not available below regional level. Claimants aged under 18 are excluded. Figures in this table are provisional.

The national and regional claimant count rates in Table 1 are the number of unemployed as a percentage of the estimated total workforce (the sum of unemployed claimants, employees in employment, self-employed, HM Forces and participants on work-related government training programmes), at mid-2006.

In January 2003, the Office for National Statistics (ONS) withdrew workforce-based claimant count rates for sub-regional areas, however, they remain available for regions and countries. The workforce-based rates, below regions, were replaced with a new residence-based measure. The claimant count, as a 'proportion' of the resident population of working age (PWA is females 16-59, males 16-64), are given in Table 3 and are named 'claimant count proportions'. TWRI's residence-based rates (which use the economically active as the denominator) are given in Table 2 (overleaf).

Table 2: National, Regional and Local Claimant Count* and Change, Unadjusted: November 2007

	Male		Female		Total		Change since previous month:		Change since previous year:	
	Rate%		Rate%		Rate%		Number	%	Number	%
Gateshead	2,355	5.2 R	725	1.8 R	3,080	3.6 R	-141	-4.4	-387	-11.2
Newcastle	4,119	6.9 R	1,251	2.4 R	5,370	4.8 R	-159	-2.9	-440	-7.6
North Tyneside	2,431	5.1 R	763	1.8 R	3,194	3.6 R	-92	-2.8	-395	-11.0
South Tyneside	2,835	7.8 R	942	3.1 R	3,777	5.7 R	132	3.6	-410	-9.8
Sunderland	4,179	6.2 R	1,363	2.4 R	5,542	4.4 R	35	0.6	-381	-6.4
Tyne & Wear	15,919	6.2 R	5,044	2.3 R	20,963	4.4 R	-225	-1.1	-2,013	-8.8
North East	34,485	5.2 W	11,344	2.0 W	45,829	3.7 W	-65	-0.1	-4,218	-8.4
Great Britain	552,759	3.3 W	210,587	1.5 W	763,346	2.4 W	-14,711	-1.9	-132,487	-14.8
United Kingdom	569,810	3.3 W	215,949	1.4 W	785,759	2.4 W	-15,200	-1.9	-136,310	-14.8

Source: Office for National Statistics, Tyne & Wear Research and Information

Notes: * Count of claimants of Jobseekers' Allowance

R = Residence-based. District and county claimant count rates are the number of unemployed now as a percentage of the estimates labour force (the economically active population), at 2001 Census © Crown Copyright.

W = Workforce-based. National and claimant count rates are the number of unemployed as a percentage of the estimated total workforce (the sum of unemployed claimants, employees in employment, self-employed, HM Forces and participants on work-related government training programmes), at mid-2006.

Caution: District and Tyne & Wear numbers in Table 2 are calculated using current (2004) wards. These numbers may vary slightly from figures extracted direct from NOMISWEB, which are based on 1991 wards and are no longer in complete alignment with current Tyne & Wear boundaries.

Table 3: National, Regional and Local Claimant Count*, Unadjusted: November 2007**(Resident PWA-based proportions)**

	Male	Percentage of population #	Female	Percentage of population #	Total	Percentage of population #
Gateshead	2,355	3.9	725	1.3	3,080	2.7
Newcastle	4,119	4.8	1,251	1.5	5,370	3.2
North Tyneside	2,431	4.1	763	1.3	3,194	2.8
South Tyneside	2,835	6.1	942	2.2	3,777	4.2
Sunderland	4,179	4.6	1,363	1.6	5,542	3.1
Tyne & Wear	15,919	4.6	5,044	1.6	20,963	3.1
North East Region	34,485	4.2	11,344	1.5	45,829	2.9
Great Britain	552,759	2.9	210,587	1.2	763,346	2.1
United Kingdom	569,810	2.9	215,949	1.2	785,759	2.1

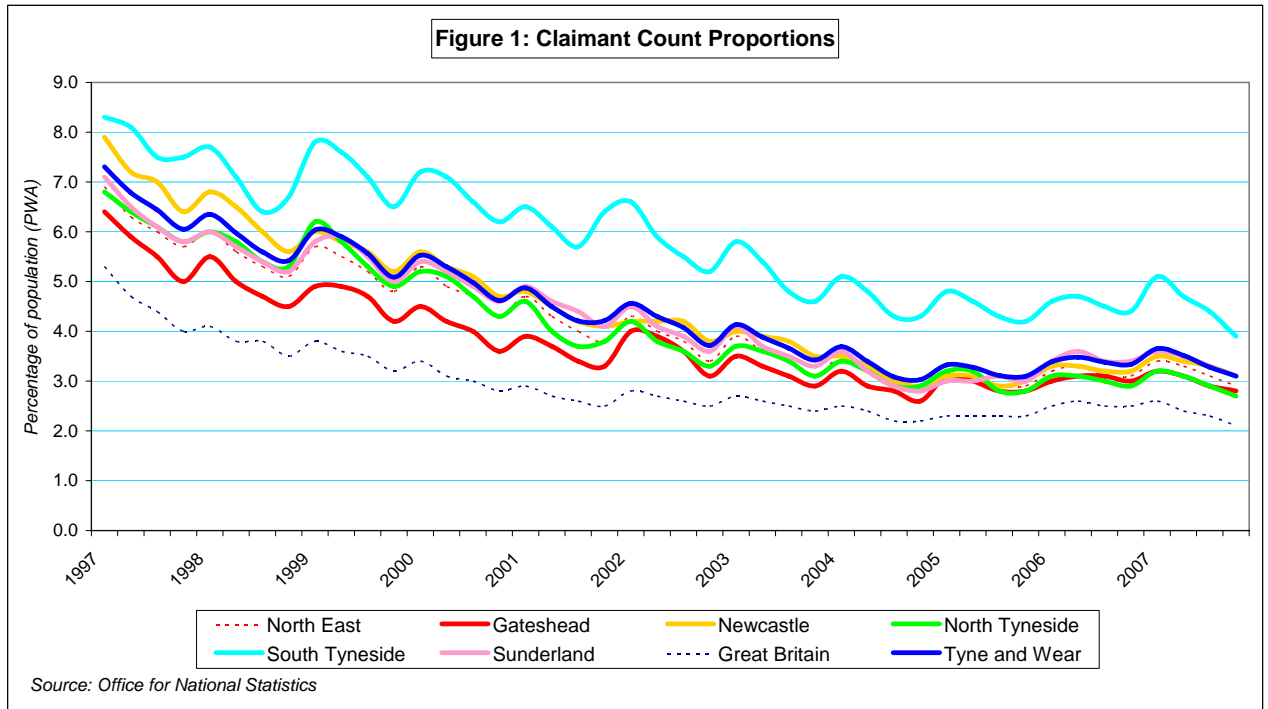
Source: Office for National Statistics, Tyne & Wear Research and Information

Notes: * Count of claimants of Jobseekers' Allowance

District and Tyne & Wear numbers in Table 3 are calculated using current (2004) wards. These numbers may vary slightly from figures extracted direct from NOMISWEB, which are based on 1991 wards.

Claimant count figures given in Table 3 are expressed as a proportion of the resident population of working age (females 16-59, males 16-64). In order to ensure consistency with District and Tyne & Wear boundaries, the population of working age (PWA) figures are derived from the mid-2001 population estimates (sum of CAS wards population of working age figures).

The percentage figures in Table 3 are referred to as 'proportions' to distinguish them from the workforce-based rates, which are available at region/country level. On average, the 'proportions' are around a fifth smaller than the workforce rates, due to the wider denominators.



Notes: Claimant count proportions (residence-based proportions of Population of Working Age) are given for January, April, July and October.

Caution: Not seasonally adjusted, so shows seasonal rises normally in January.

Table 4: National, Regional and Local Benefit Claimants: May 2007

	Incapacity/Severe Disablement Allowance*						Benefit Claimants - working age client group**					
	Male	% of PWA #	Female	% of PWA #	Total	% of PWA #	Male	% of PWA #	Female	% of PWA #	Total	% of PWA #
Gateshead	5,300	8.9	3,100	5.5	8,400	7.3	11,600	19.4	9,500	17.0	21,100	18.2
Newcastle	5,400	6.2	3,600	4.4	9,000	5.4	15,500	17.9	13,400	16.5	28,800	17.2
North Tyneside	4,200	7.1	2,800	4.9	7,100	6.1	10,900	18.4	8,800	15.6	19,700	17.0
South Tyneside	4,100	8.8	2,000	4.6	6,100	6.7	9,800	21.0	8,300	19.0	18,000	19.9
Sunderland	8,100	8.9	5,000	5.8	13,100	7.4	17,800	19.6	15,400	18.0	33,200	18.8
Tyne & Wear	27,100	7.9	16,600	5.1	43,700	6.6	65,500	19.1	55,400	17.1	120,900	18.2
North East Region	63,600	7.7	38,900	5.1	102,500	6.5	147,200	17.9	126,500	16.6	273,700	17.3
Great Britain	944,000	5.0	622,600	3.5	1,566,800	4.3	2,461,400	12.9	2,282,400	13.0	4,743,800	13.0

Source: Department for Work and Pensions

Notes: Benefits claimants counts are rounded to the nearest 100 and are subject to sampling variability.

Data relate to a single point in time and provide a snapshot of claims at that point. Data are not seasonally adjusted.

* Count of those in receipt of Incapacity Benefit or Severe Disablement Allowance, aged 16-64, for all durations.

** Benefit claimants – working age client group includes benefit claimants aged 16-64 years, on Income Support (IS) only, Job Seekers Allowance (JSA) only, Incapacity Benefit (IB) only, IS and IB, DLA and IB, DLA, IS and IB, Disability Living Allowance (DLA) only, DLA, IS and SDA, DLA and IS, DLA and SDA, IS and SDA, Severe Disablement Allowance (SDA) only, DLA and JSA, other combinations. Data includes all durations and all family types.

Benefit claimant count figures given in Table 4 are expressed as a proportion of the resident population of working age (females 16-59, males 16-64). In order to ensure consistency with District and Tyne & Wear boundaries, the population of working age (PWA) figures are derived from the mid-2001 population estimates (sum of CAS wards population of working age figures).

INTERNATIONAL LABOUR ORGANISATION (ILO) MEASURE OF UNEMPLOYMENT

The ILO definition of unemployment, refers to people “without a job who were available to start work in the two weeks following their LFS interview and had looked for work in the four weeks prior to interview (or were waiting to take up a job they had already obtained)”. This has been the official, government, definition of unemployment since 1998.

Table 5: National, Regional and Local ILO Unemployment, Unadjusted: 12 months Apr 2006-Mar 2007

	Male	%	Confidence*	Female	%	Confidence*	Total	%	Confidence*
Gateshead	3,200	6.6	2.3	1,800	4.4	2.0	4,900	5.6	1.6
Newcastle	5,800	8.6	2.6	3,700	6.7	2.4	9,400	7.8	1.8
North Tyneside	4,100	8.4	2.7	2,400	5.2	2.2	6,500	6.9	1.7
South Tyneside	4,600	12.7	3.2	2,400	8.0	2.7	7,000	10.6	2.1
Sunderland	5,000	7.6	2.6	3,700	6.4	2.5	8,800	7.0	1.8
Tyne & Wear	22,700	8.5	1.2	13,900	6.1	1.1	36,600	7.4	0.8
North East Region	48,000	7.7	0.7	30,000	5.6	0.7	77,900	6.7	0.5
Great Britain	882,400	5.8	0.1	638,300	5	0.2	1,520,700	5.4	0.1

Source: Annual Population Survey, Office for National Statistics.

Notes: Unemployment data from the Annual Population Survey (APS), covering a year's data.

The unemployment rate is the number of unemployed people aged 16 to 59/64 expressed as a percentage of the economically active population aged 16 to 59/64.

*Data are presented with an indication of their reliability, in the form of approximate 95% confidence intervals. For example, an LFS estimate and confidence interval of 6.7% +/-0.7%, means the true rate would expect to lie between 6.0% and 7.4%. Only in exceptional circumstances would the true rate be outside the confidence interval. The narrower the confidence interval, the more reliable the estimate.

APS estimates are rounded to the nearest 100 by ONS. Formerly, ONS' LFS estimates were rounded to the nearest 1,000. The annual Labour Force Survey (LFS) is now incorporated into the Annual Population Survey (APS). Data are published quarterly with each publication covering a year's data. LFS - quarterly: four quarter averages are no longer updated.

Appendix 1: Claimant Count Statistics Current (2004) Wards

November 2007

Ward	FLOWS		CLAIMANT UNEMPLOYMENT					
	onto regr	off regr	Male	%*	Female	%*	Total	%*
Birtley	17	31	62	3.1	18	1.0	80	2.1
Blaydon	41	51	108	4.6	47	2.3	155	3.5
Bridges	54	70	204	12.3	64	5.3	268	9.3
Chopwell and Rowlands Gill	37	46	99	4.6	32	1.7	131	3.3
Chowdene	34	32	95	4.7	32	1.8	127	3.4
Crawcrook and Greenside	28	34	56	2.4	16	0.8	72	1.6
Deckham	46	51	177	8.6	31	1.8	208	5.4
Dunston and Teams	73	83	215	12.1	45	3.0	260	8.0
Dunston Hill and Whickham East	20	18	66	2.9	20	1.0	86	2.0
Felling	56	68	181	10.3	56	3.8	237	7.3
High Fell	49	51	159	8.5	39	2.3	198	5.6
Lamesley	26	33	91	4.8	25	1.6	116	3.3
Lobley Hill and Bensham	56	66	145	6.5	41	2.1	186	4.5
Low Fell	20	23	38	1.6	21	1.0	59	1.3
Pelaw and Heworth	36	38	78	4.0	27	1.6	105	2.9
Ryton, Crookhill and Stella	21	22	66	3.2	25	1.4	91	2.3
Saltwell	46	64	148	7.0	59	3.4	207	5.4
Wardley and Leam Lane	29	29	73	3.5	31	1.8	104	2.7
Whickham North	26	32	77	4.0	22	1.3	99	2.8
Whickham South and Sunnyside	22	24	36	1.5	21	1.0	57	1.3
Windy Nook and Whitehills	45	41	116	5.1	29	1.5	145	3.4
Winlaton and High Spen	26	28	65	3.1	24	1.4	89	2.3
GATESHEAD	808	935	2,355	5.2	725	1.8	3,080	3.6
Benwell and Scotswood	82	103	290	9.8	86	3.4	376	6.9
Blakelaw	52	67	195	8.0	53	2.5	248	5.4
Byker	96	113	342	14.4	115	5.9	457	10.6
Castle	26	28	58	2.1	28	1.1	86	1.6
Dene	18	18	39	1.6	13	0.6	52	1.1
Denton	34	51	120	5.0	42	2.0	162	3.6
East Gosforth	19	24	51	2.2	18	0.8	69	1.6
Elswick	97	91	457	18.9	114	7.0	571	14.1
Fawdon	57	62	167	7.6	56	2.8	223	5.4
Fenham	36	50	144	6.1	49	2.4	193	4.4
Kenton	63	72	192	8.5	67	3.4	259	6.1
Lemington	27	49	98	3.7	35	1.4	133	2.6
Newburn	48	35	122	5.6	41	2.1	163	3.9
North Heaton	32	24	77	3.2	30	1.4	107	2.4
North Jesmond	11	17	36	1.7	19	1.0	55	1.4
Ouseburn	41	56	162	8.6	36	2.3	198	5.7
Parklands	20	27	36	1.8	18	1.1	54	1.5
South Heaton	53	67	141	6.9	41	2.2	182	4.6
South Jesmond	19	24	77	3.8	18	1.0	95	2.5
Walker	99	98	409	18.7	96	5.5	505	12.9
Walkergate	51	58	172	7.4	52	2.7	224	5.2
Westerhope	16	16	47	1.9	10	0.5	57	1.2
Westgate	79	74	283	17.1	80	6.2	363	12.4
West Gosforth	10	15	27	1.1	19	0.9	46	1.0
Wingrove	60	67	197	8.6	72	3.9	269	6.5
Woolsington	51	52	180	7.7	43	2.1	223	5.1
NEWCASTLE	1,197	1,358	4,119	6.9	1,251	2.4	5,370	4.8

Source: Office for National Statistics, Tyne & Wear Research and Information

Notes: * Rates are the number of unemployed as a percentage of the estimated labour force (the economically active population), at 2001 Census © Crown Copyright

Ward	FLOWS		CLAIMANT UNEMPLOYMENT						
	onto	off	Male	%*	Female	%*	Total	%*	
	regr	regr							
November 2007									
Battle Hill	42	52	129	4.3	46	1.7	175	3.1	
Benton	33	35	71	3.1	28	1.3	99	2.3	
Camperdown	47	54	123	4.5	41	1.7	164	3.2	
Chirton	74	87	288	11.4	72	3.3	360	7.7	
Collingwood	50	47	123	4.8	35	1.6	158	3.4	
Cullercoats	17	25	58	2.7	12	0.6	70	1.7	
Howdon	82	72	237	10.1	75	4.0	312	7.4	
Killingworth	33	32	76	3.0	20	0.9	96	2.0	
Longbenton	56	58	137	7.0	45	2.6	182	5.0	
Monkseaton North	25	25	47	2.0	17	0.8	64	1.4	
Monkseaton South	15	34	53	2.4	21	1.0	74	1.7	
Northumberland	36	28	96	4.3	32	1.6	128	3.0	
Preston	31	26	63	2.8	19	0.9	82	1.9	
Riverside	93	100	321	13.2	80	4.0	401	9.1	
St Mary's	15	12	31	1.4	15	0.8	46	1.1	
Tynemouth	27	38	93	3.6	34	1.5	127	2.6	
Valley	37	47	106	5.2	41	2.3	147	3.9	
Wallsend	60	71	218	8.3	68	3.0	286	5.8	
Weetslade	18	18	66	2.8	25	1.2	91	2.0	
Whitley Bay	33	51	95	3.9	37	1.7	132	2.8	
NORTH TYNESIDE	824	912	2,431	5.1	763	1.8	3,194	3.6	
Beacon and Bents	80	77	290	12.9	81	4.8	371	9.4	
Bede	44	51	156	8.8	35	2.4	191	5.9	
Biddick and All Saints	79	46	256	14.3	84	5.4	340	10.1	
Boldon Colliery	40	37	108	4.6	46	2.2	154	3.5	
Cleadon and East Boldon	10	17	33	1.5	12	0.6	45	1.1	
Cleadon Park	43	38	138	8.4	54	3.9	192	6.3	
Fellgate and Hedworth	65	51	142	6.9	36	2.0	178	4.7	
Harton	38	38	128	6.4	52	3.3	180	5.0	
Hebburn North	69	45	161	7.8	68	3.9	229	6.0	
Hebburn South	45	40	124	6.5	27	1.7	151	4.3	
Horsley Hill	59	40	138	7.5	60	4.0	198	5.9	
Monkton	55	51	150	7.4	55	3.1	205	5.4	
Primrose	71	75	215	11.6	69	4.6	284	8.4	
Simonside and Rekendyke	77	67	268	12.6	95	5.9	363	9.7	
Westoe	38	34	108	4.6	43	2.3	151	3.6	
West Park	40	34	129	5.9	36	2.0	165	4.1	
Whitburn and Marsden	35	29	98	5.5	27	1.8	125	3.8	
Whiteleas	54	40	193	9.7	62	3.9	255	7.1	
SOUTH TYNESIDE	942	810	2,835	7.8	942	3.1	3,777	5.7	

Source: Office for National Statistics, Tyne & Wear Research and Information

Notes: * Rates are the number of unemployed as a percentage of the estimated labour force (the economically active population), at 2001 Census © Crown Copyright

November 2007								
Ward	FLOWS		CLAIMANT UNEMPLOYMENT					
	onto regr	off regr	Male	%*	Female	%*	Total	%*
Barnes	41	38	135	4.8	37	1.5	172	3.3
Castle	57	58	167	6.2	53	2.4	220	4.4
Copt Hill	50	50	106	3.7	41	1.8	147	2.9
Doxford	32	34	93	3.2	29	1.1	122	2.2
Fulwell	33	26	68	2.3	28	1.1	96	1.8
Hendon	147	119	527	20.1	136	6.4	663	14.0
Hetton	41	48	123	4.8	37	1.8	160	3.4
Houghton	52	53	98	3.7	39	1.7	137	2.8
Millfield	54	54	198	7.5	55	2.5	253	5.2
Pallion	66	58	244	9.8	63	2.9	307	6.6
Redhill	96	93	242	9.4	74	3.5	316	6.7
Ryhope	59	44	147	6.3	55	2.7	202	4.6
St Anne's	72	50	232	10.2	73	3.8	305	7.2
St Chad's	32	42	112	5.1	46	2.3	158	3.8
St Michael's	28	35	151	6.8	40	2.2	191	4.7
St Peter's	69	59	160	5.6	62	2.6	222	4.3
Sandhill	67	61	234	9.8	74	3.7	308	7.0
Shiney Row	48	45	119	3.9	36	1.4	155	2.8
Silksworth	48	37	181	7.1	58	2.5	239	4.9
Southwick	68	54	252	10.5	86	4.2	338	7.5
Washington Central	33	59	108	3.4	37	1.3	145	2.4
Washington East	42	52	109	3.6	44	1.7	153	2.7
Washington North	63	72	203	6.9	74	2.9	277	5.1
Washington South	37	48	83	2.6	35	1.3	118	2.0
Washington West	53	40	87	2.8	51	1.9	138	2.4
SUNDERLAND	1,388	1,329	4,179	6.2	1,363	2.4	5,542	4.4
TYNE & WEAR	5,159	5,344	15,919	6.2	5,044	2.3	20,963	4.4

Source: Office for National Statistics, Tyne & Wear Research and Information

Notes: * Rates are the number of unemployed as a percentage of the estimated labour force (the economically active population), at 2001 Census © Crown Copyright

APPENDIX 2: ANNUAL SUPPLEMENT ON AGE & DURATION

This Annual Supplement contains age-related breakdowns of unemployment.

Appendix Table 2.1 shows that the International Labour Organisation (ILO) (i.e. official) unemployment rates for young people (16-24) are twice as high (around 15% in Tyne & Wear) as the overall average unemployment rates (7.4% in Tyne & Wear, shown in Table 5). Numerically, there are fewer unemployed young people (aged up to 24) than there are unemployed aged 25-49. Over 40% of all unemployed people are aged up to 24.

Even amongst unemployed claimants, about a third are aged up to 24 (Appendix Table 2.2). Durations of claimant unemployment, however, show about two-thirds are under six months (Appendix Table 2.3).

INTERNATIONAL LABOUR ORGANISATION (ILO) MEASURE OF UNEMPLOYMENT

The ILO definition of unemployment, obtained from the Labour Force Survey (LFS), refers to people “without a job who were available to start work in the two weeks following their LFS interview and had looked for work in the four weeks prior to interview (or were waiting to take up a job they had already obtained)”.

Appendix Table 2.1: National, Regional and County ILO Unemployment By Age Band, Unadjusted: Apr 2006-Mar 2007

	16-24	Rate %	Confidence*	25-49	Rate %	Confidence*	50+	Rate %	Confidence*
Tyne & Wear	14,600	15.2	2.7	16,000	5.5	0.9	6,000	5.6	1.4
North East Region	32,500	16.0	1.8	34,500	5.0	0.6	11,000	4.1	0.8
Great Britain	627,400	14.2	0.5	689,100	4.1	0.1	204,300	3.1	0.2

Source: Annual Population Survey, Office for National Statistics.

Notes: Unemployment data are from the Annual Population Survey (APS), covering a year's data.

*Data are presented with an indication of their reliability, in the form of approximate 95% confidence intervals. For example, an LFS estimate and confidence interval of 6.7% +/-0.7%, means the true rate would expect to lie between 6.0% and 7.4%. Only in exceptional circumstances would the true rate be outside the confidence interval. The narrower the confidence interval, the more reliable the estimate.

APS estimates are rounded to the nearest 100 by ONS. Formally, ONS' LFS estimates were rounded to the nearest 1,000.

CLAIMANT COUNT UNEMPLOYMENT

The claimant count reports numbers qualifying for benefits as a result of unemployment and is subject to the associated administrative system.

Appendix Table 2.2: Unemployment Claimants by Age, % in each age band: April 2007

	Under 20	20-24	25-49	50+
Gateshead	11.5	19.5	51.0	17.9
Newcastle	11.5	20.0	52.3	16.1
North Tyneside	12.5	18.3	52.1	17.1
South Tyneside	12.3	19.2	49.5	19.0
Sunderland	14.9	19.3	49.9	15.9
Tyne & Wear	12.7	19.3	50.9	17.1
North East	13.4	20.6	49.9	16.2
Great Britain	12.1	19.0	52.6	16.3
United Kingdom	12.1	19.0	52.6	16.3

Source: Office for National Statistics

Note: Raw data are rounded to nearest 5 (ONS disclosure control)

Appendix Table 2.3: Unemployment Claimants by Duration, % unemployed by length of time: April 2007

	Under 6 months	6-12 months	1-2 years	Over 2 years
Gateshead	68.6	17.4	10.6	3.5
Newcastle	64.7	19.7	11.7	4.0
North Tyneside	67.5	19.0	10.8	2.6
South Tyneside	66.4	17.5	11.5	4.6
Sunderland	69.0	17.5	11.1	2.4
Tyne & Wear	67.2	18.3	11.2	3.4
North East	66.5	18.1	11.1	4.2
Great Britain	65.0	18.3	11.9	4.8
United Kingdom	64.8	18.3	12.0	4.8

Source: Office for National Statistics

Note: Raw data are rounded to nearest 5 (ONS disclosure control)