

# Maps of Unemployment in Tyne & Wear: July 2010

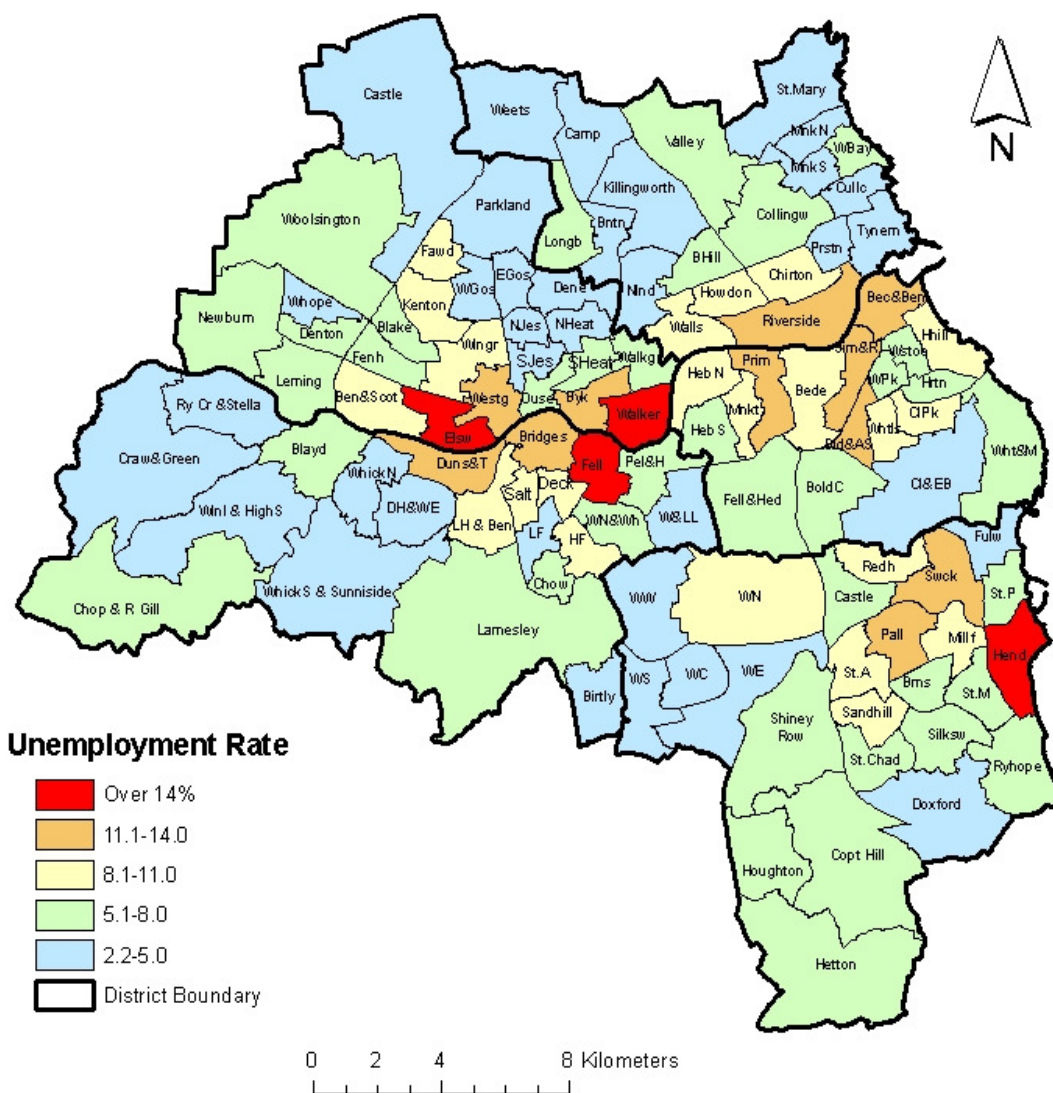


Published: August 2010

EU10/08b.

## CLAIMANT COUNT UNEMPLOYMENT

### Claimant Count Unemployment Rates, July 2010



Note: Rates are the number of unemployed as a percentage of the estimated labour force (the economically active population), at mid-2007 (TWRI ests. based on ONS population estimates).

Source: Office for National Statistics, Tyne & Wear Research and Information. Mapped by TWRI, © Crown Copyright, 2009, All rights reserved (Tyne & Wear Research and Information) (Licence No 10002987) (July 2010).

TYNE & WEAR



RESEARCH AND INFORMATION

TYNE & WEAR RESEARCH AND INFORMATION (TWRI)

Provincial House, Northumberland Street, Newcastle Upon Tyne. NE1 7DQ

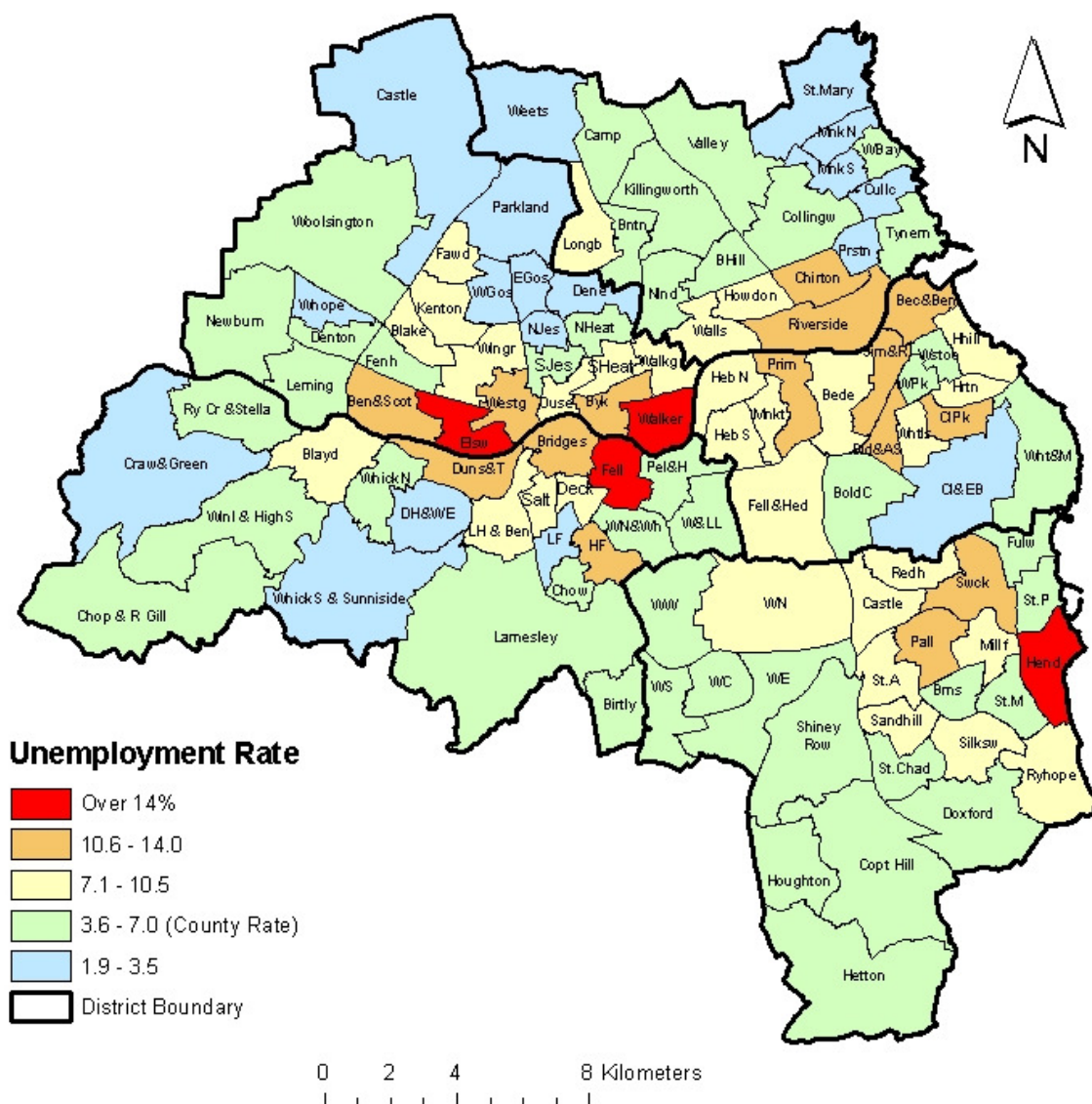
Tel: (0191) 277 1912, Fax: (0191) 277 1911

E-MAIL: [twri@twri.org.uk](mailto:twri@twri.org.uk)

WEBSITE: [www.twri.org.uk](http://www.twri.org.uk)

## Claimant Count Unemployment Rates, July 2010

(Showing County Rate = 7.0%)



Note: Rates are the number of unemployed as a percentage of the estimated labour force (the economically active population), at mid-2007 (TWRI ests. based on ONS population estimates).

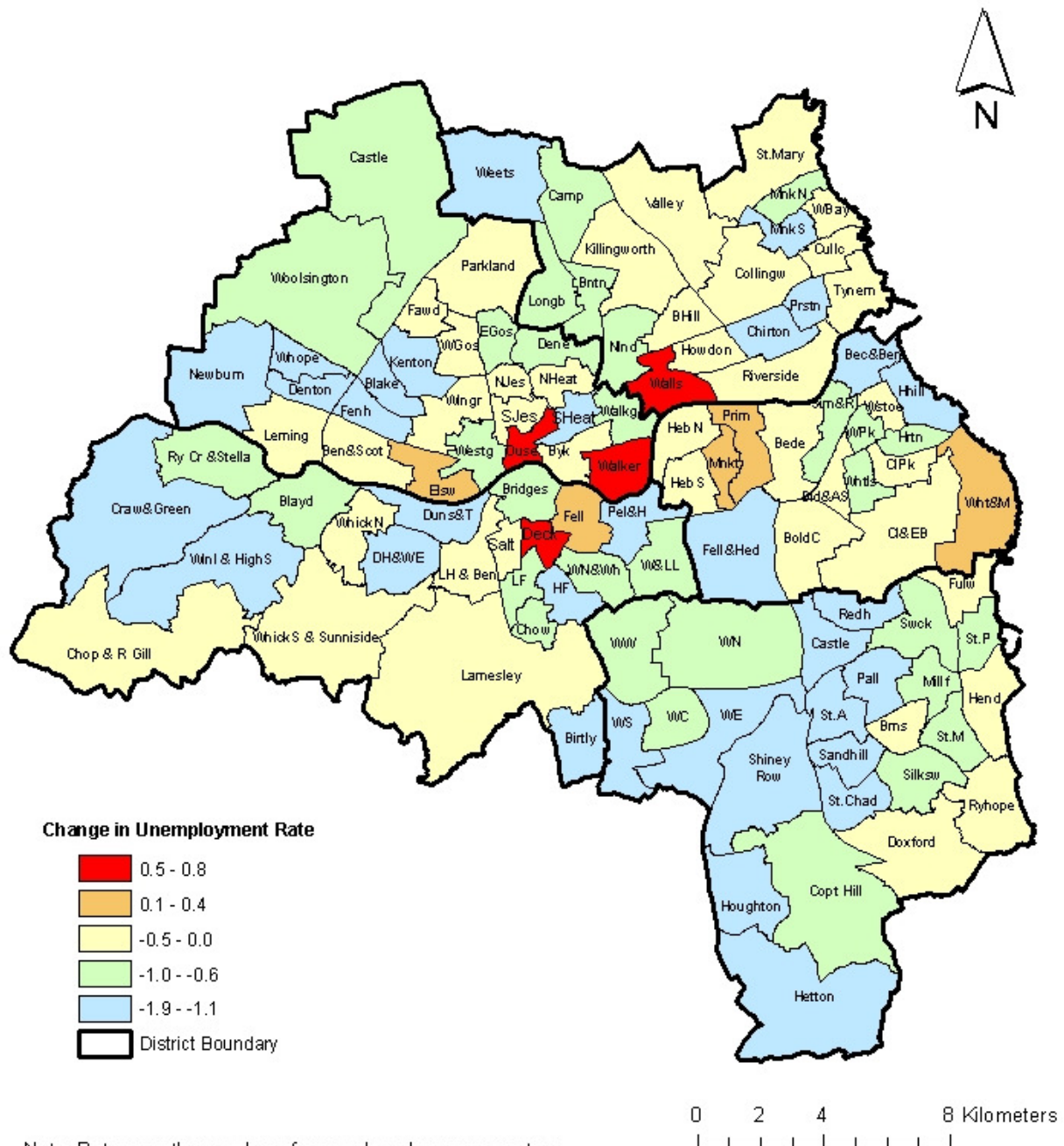
Source: Office for National Statistics, Tyne & Wear Research and Information. Mapped by TWRI, © Crown Copyright, 2009, All rights reserved (Tyne & Wear Research and Information) (Licence No 10002987) (July 2010).

TYNE & WEAR



RESEARCH AND INFORMATION

## Change in Claimant Count Unemployment Rates, July 2009 to July 2010

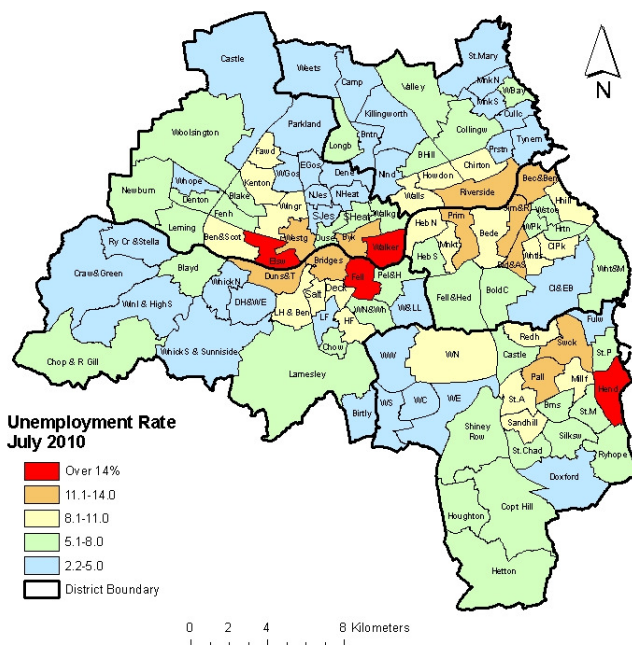
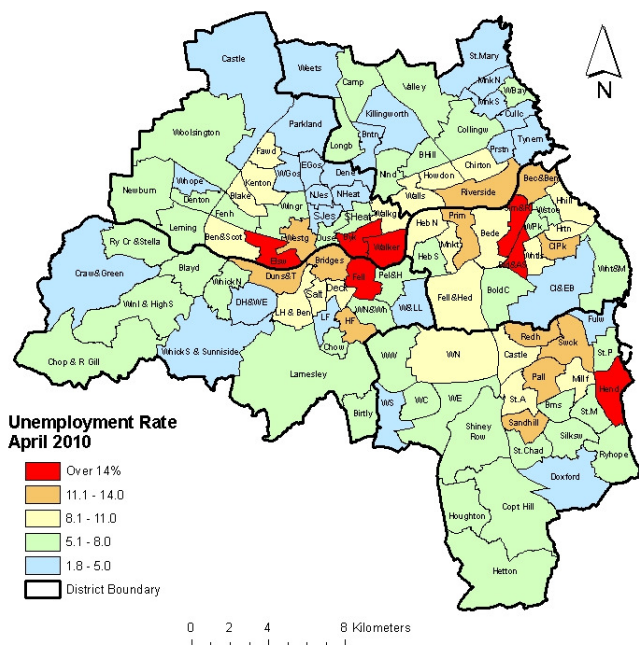
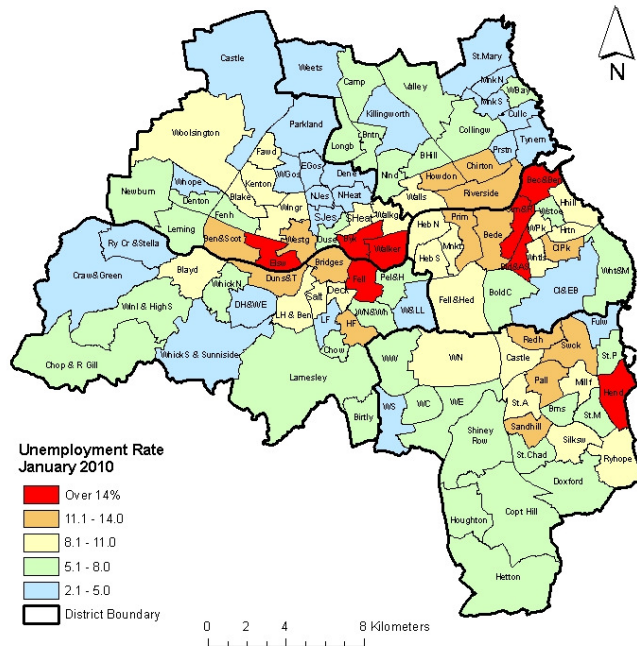
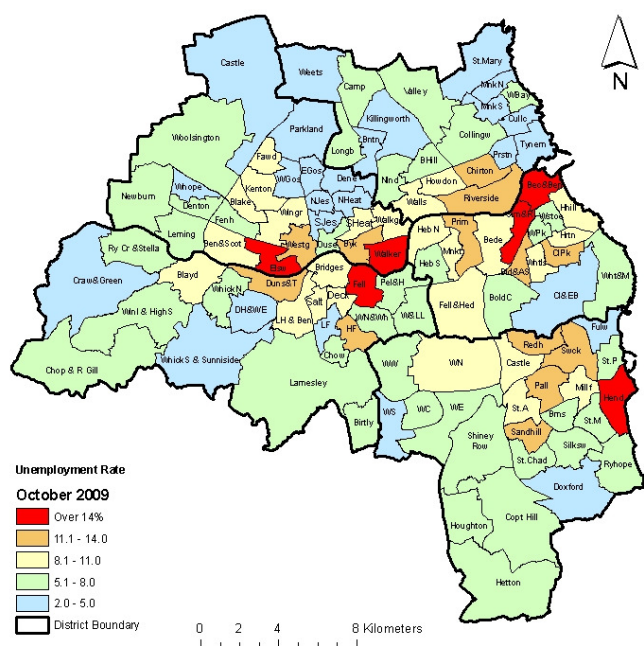


Note: Rates are the number of unemployed as a percentage of the estimated labour force (the economically active population), at mid-2007 (TWRI ests. based on ONS population estimates).

Source: Office for National Statistics, Tyne & Wear Research and Information. Mapped by TWRI, © Crown Copyright, 2009, All rights reserved (Tyne & Wear Research and Information) (Licence No 10002987) July 2010).



## Claimant Count Unemployment Rates October 2009 to July 2010



Note: Rates are the number of unemployed as a percentage of the estimated labour force (the economically active population), at mid-2007 (TWRI ests. based on ONS population estimates).

Source: Office for National Statistics, Tyne & Wear Research and Information. Mapped by TWRI, © Crown Copyright, 2009, All rights reserved (Tyne & Wear Research and Information) (Licence No 10002987) (May 2010).