

Tables of Unemployment in Tyne & Wear: February 2011



Published: March 2011
EU11/03a

The claimant count reports numbers qualifying for benefits as a result of unemployment and is subject to the associated administrative system.

**Table 1: Change in Total Claimant Count: Seasonally Adjusted*:
February 2011**

(Workforce rates)[#]

	Total	Rate %	Change since previous:			
			Month	%	Year	%
North East Region	80,100	6.6 (w)	0	0.0	-4,900	-5.8
Great Britain	1,389,500	4.4 (w)	-10,500	-0.8	-1 31,600	-8.7
United Kingdom	1,448,600	4.5 (w)	-10,200	-0.7	-1 28,100	-8.1

Source: Office for National Statistics

Notes:

* The seasonally adjusted series takes account of previous changes which have affected the unemployment count so that the whole series over time is consistent with current figures. Seasonally adjusted figures are not available below regional level. Claimants aged under 18 are excluded. Figures in this table are provisional.

The national and regional claimant count rates in Table 1 are the number of unemployed as a percentage of the estimated total workforce (the sum of unemployed claimants, employees in employment, self-employed, HM Forces and participants on work-related government training programmes), at mid-2009.

In January 2003, the Office for National Statistics (ONS) withdrew workforce-based claimant count rates for sub-regional areas, however, they remain available for regions and countries. The workforce-based rates, below regions, were replaced with a new residence-based measure. The claimant count, as a 'proportion' of the resident population (aged 16 - 64), are given in Table 3 and are named 'claimant count proportions'. TWRI's residence-based rates (which use the economically active as the denominator) are given in Table 2 (overleaf).

Table 2: National, Regional and Local Claimant Count* and Change, Unadjusted: February 2011

	Male	Rate%	Female	Rate%	Total	Rate%	Change since previous month:		Change since previous year:	
							Number	%	Number	%
Gateshead	4,312	9.1 R	1,796	4.3 R	6,108	6.8 R	222	3.8	-350	-5.4
Newcastle	6,340	8.9 R	2,574	4.3 R	8,914	6.8 R	191	2.2	-510	-5.4
North Tyneside	4,412	8.5 R	1,772	3.8 R	6,184	6.2 R	134	2.2	-142	-2.2
South Tyneside	4,152	10.6 R	1,878	5.7 R	6,030	8.4 R	-13	-0.2	-750	-11.1
Sunderland	6,697	9.4 R	2,970	4.8 R	9,667	7.2 R	23	0.2	-865	-8.2
Tyne and Wear	25,913	9.2 R	10,990	4.5 R	36,903	7.0 R	557	1.5	-2,617	-6.6
North East	60,296	9.1 W	24,735	4.5 W	85,031	7.0 W	1,095	1.3	-4,608	-5.1
Great Britain	1,018,072	6.0 W	459,668	3.2 W	1,477,740	4.7 W	32,361	2.2	-122,441	-7.7
United Kingdom	1,062,779	6.1 W	475,408	3.2 W	1,538,187	4.7 W	33,119	2.2	-118,854	-7.2

Source: Office for National Statistics, Tyne and Wear Research and Information

Notes:

* Count of claimants of Jobseekers' Allowance

R = Residence-based. District and county claimant count rates are the number of unemployed as a percentage of the estimated labour force (the economically active population aged 16-64), mid-2009 (TWRI estimates are based on ONS population estimates). The new denominators, introduced with the February 2011 data, include Females aged 60-64. Previous EA denominators used Male 16-64, Female 16-59).

W = Workforce-based. National and regional claimant count rates are the number of unemployed as a percentage of the estimated total workforce (the sum of unemployed claimants, employees in employment, self-employed, HM Forces and participants on work-related government training programmes), at mid-2009.

Caution:

District and Tyne & Wear numbers in Table 2 are calculated using current (2004) wards. These numbers may vary slightly from figures extracted direct from NOMISWEB, which are based on 1991 wards and are no longer in complete alignment with current Tyne & Wear boundaries.

Table 3: National, Regional and Local Claimant Count*, Unadjusted: February 2011

(Resident PWA-based proportions)

	Male	Percentage of population #	Female	Percentage of population #	Total	Percentage of population #
Gateshead	4,312	7.1	1,796	2.9	6,108	5.0
Newcastle	6,340	6.8	2,574	2.8	8,914	4.8
North Tyneside	4,412	7.0	1,772	2.8	6,184	4.9
South Tyneside	4,152	8.6	1,878	3.9	6,030	6.2
Sunderland	6,697	7.3	2,970	3.2	9,667	5.3
Tyne and Wear	25,913	7.3	10,990	3.1	36,903	5.2
North East Region	60,296	7.2	24,735	2.9	85,031	5.0
Great Britain	1,018,072	5.2	459,668	2.4	1,477,740	3.8
United Kingdom	1,062,779	5.3	475,408	2.4	1,538,187	3.8

Source: Office for National Statistics, Tyne and Wear Research and Information

Notes:

* Count of claimants of Jobseekers' Allowance

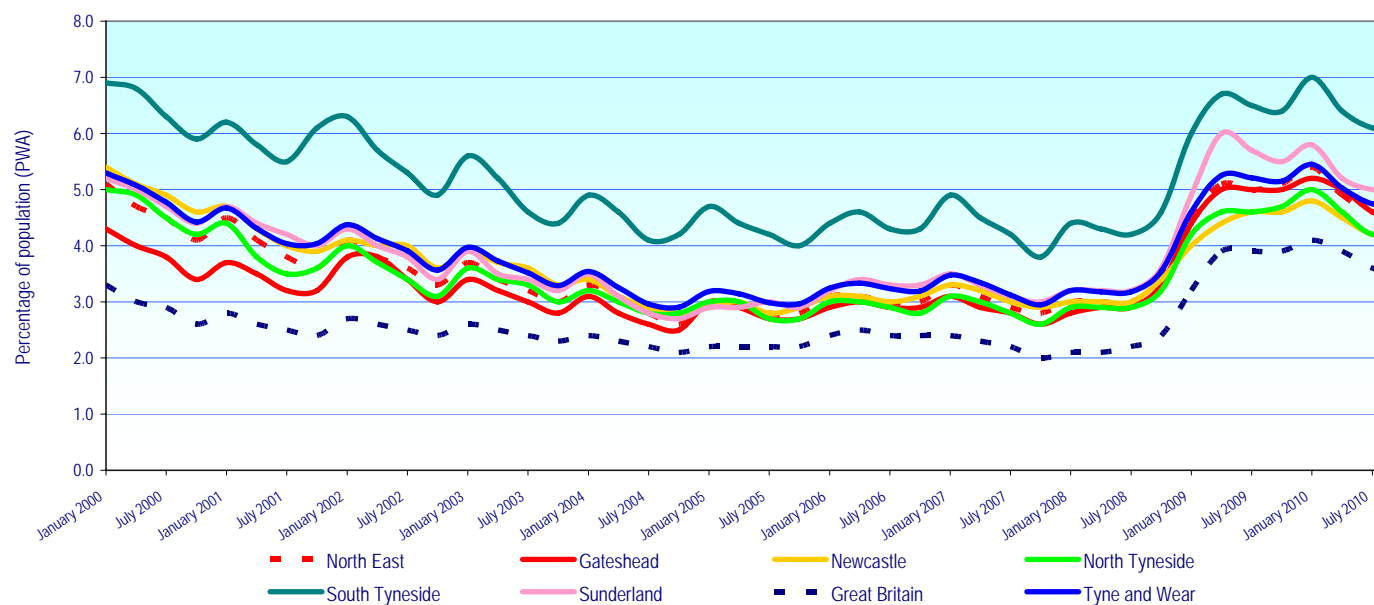
District and Tyne & Wear numbers in Table 3 are calculated using current (2004) wards. These numbers may vary slightly from figures extracted direct from NOMISWEB, which are based on 1991 wards.

Claimant count figures given in Table 3 are expressed as a proportion of the resident population of working age (16-64). In order to ensure consistency with District and Tyne & Wear boundaries, the population of working age (PWA) figures are calculated using the mid-2007 resident population aged 16-64 (sum of CAS wards population of working age figures).

The percentage figures in Table 3 are referred to as 'proportions' to distinguish them from the workforce-based rates, which are available at region/country level. On average, the 'proportions' are around a fifth smaller than the workforce rates, due to the wider denominators.

Note: From July 2010 data, the denominators have been widened to age 64. Previously, for women it was up to age 59. This new wider definition of the population of working age (PWA) has reduced the claimant count proportion for women by about 0.3pp (or about a tenth) and that for totals by about 0.2pp.

Figure 1: Claimant Count Proportions



Source: Office for National Statistics

Notes:

Claimant count proportions (residence-based proportions of 16-64Population) are given for January, April, July and October.

Caution:

Not seasonally adjusted, so shows seasonal rises normally in January.

Table 4: National, Regional and Local Benefit Claimants

	Benefit Claimants - working age client group* August 2010					
	% of PWA		% of PWA		% of PWA	
	Male	#	Female	#	Total	#
Gateshead	13,090	21.5	10,920	17.7	24,010	19.6
Newcastle	18,070	19.4	15,360	16.8	33,430	18.1
North Tyneside	11,550	18.4	9,930	15.4	21,480	16.9
South Tyneside	11,460	23.8	9,750	20.0	21,210	21.9
Sunderland	20,650	22.6	17,630	19.0	38,280	20.8
Tyne and Wear	74,820	21.0	63,590	17.7	138,410	19.4
North East Region	169,460	20.2	146,780	17.3	316,230	18.8
Great Britain	2,940,840	15.1	2,787,420	14.3	5,728,260	14.7
	Employment and Support Allowance Claimants** August 2010					
	% of PWA		% of PWA		% of PWA	
	Male	#	Female	#	Total	#
Gateshead	1,510	2.5	1,060	1.7	2,570	2.1
Newcastle	2,050	2.2	1,440	1.6	3,480	1.9
North Tyneside	1,290	2.1	1,050	1.6	2,340	1.8
South Tyneside	1,280	2.7	960	2.0	2,240	2.3
Sunderland	2,360	2.6	1,700	1.8	4,060	2.2
Tyne and Wear	8,490	2.4	6,210	1.7	14,700	2.1
North East Region	18,180	2.2	13,270	1.6	31,450	1.9
Great Britain	318,690	1.6	245,290	1.3	563,980	1.4
	Incapacity/Severe Disablement Allowance*** August 2010					
	% of PWA		% of PWA		% of PWA	
	Male	#	Female	#	Total	#
Gateshead	3,750	6.1	2,060	3.3	5,810	4.7
Newcastle	4,370	4.7	2,410	2.6	6,790	3.7
North Tyneside	3,010	4.8	1,910	3.0	4,920	3.9
South Tyneside	2,950	6.1	1,530	3.1	4,470	4.6
Sunderland	6,170	6.8	3,630	3.9	9,800	5.3
Tyne and Wear	20,250	5.7	11,550	3.2	31,800	4.4
North East Region	48,520	5.8	29,020	3.4	77,540	4.6
Great Britain	749,710	3.9	501,970	2.6	1,251,680	3.2
Source: Department for Work and Pensions						

Over the period from August 2008, in Tyne & Wear, Benefit Claimants (Working age Client Group) were up by 8,180 (+6.3%). ESA claimants reached 14,700 – which explains the 9,850 (-23.6%) fall in IB/SDA numbers.

For information: Data for August 2008 is the last quarterly snapshot before the introduction of the new ESA (Employment and Support Allowance) which replaced Incapacity Benefit for new claimants from Oct. 2008.

Notes Overleaf:

The data are based on 100% of claims so are not subject to any sampling error. Figures are rounded to the nearest 10, and those below 5 are suppressed as statistically unreliable.

Data relate to a single point in time and provide a snapshot of claims at that point. Data are not seasonally adjusted.

- * Benefit claimants – working age client group includes benefit claimants aged 16-64 years, on Income Support (IS) only, Job Seekers Allowance (JSA) only, Incapacity Benefit (IB) only, IS and IB, DLA and IB, DLA, IS and IB, Disability Living Allowance (DLA) only, DLA, IS and SDA, DLA and IS, DLA and SDA, IS and SDA, Severe Disablement Allowance (SDA) only, DLA and JSA, other combinations. Data includes all durations and all family types.
- ** The figures relating to Employment Support Allowance have been thoroughly quality assured to National Statistics standard; however it should be noted that this is a new benefit using a new data source which may not have reached steady state in terms of operational processing. Hence most recent data shown is provisional. Tyne & Wear fig. is sum of districts. GB fig. is sum of GORs (regions).
- *** Count of those in **receipt** of Incapacity Benefit or Severe Disablement Allowance, aged 16-64, for all durations.
- # Benefit claimant count figures given in Table 4 are expressed as a proportion of the resident population of working age (16-64). In order to ensure consistency with District and Tyne & Wear boundaries, the population of working age (PWA) figures are derived from the mid-2001 population estimates (sum of CAS wards population of working age figures).

INTERNATIONAL LABOUR ORGANISATION (ILO) MEASURE OF UNEMPLOYMENT

The ILO definition of unemployment refers to people “without a job who were available to start work in the two weeks following their LFS interview and had looked for work in the four weeks prior to interview (or were waiting to take up a job they had already obtained)”. This has been the official, government, definition of unemployment since 1998.

Note: the estimates of District unemployment rates can be particularly volatile, with confidence intervals of about plus or minus 3 percentage points.

Table 5: National, Regional and Local ILO Unemployment, Unadjusted: 12 months Jul 2009-Jun 2010

	Male	%	Confidence*	Female	%	Confidence*	Total	%	Confidence*
Gateshead	5,000	10.2	3.1	3,700	8.4	2.7	8,700	9.3	2.1
Newcastle	11,800	16.6	3.7	4,100	6.9	2.7	15,900	12.1	2.4
North Tyneside	6,100	11.1	3.0	3,300	6.6	2.4	9,400	9.0	1.9
South Tyneside	8,100	21.4	4.0	3,300	9.6	2.9	11,300	15.8	2.6
Sunderland	9,900	13.5	3.3	6,900	11.0	3.2	16,800	12.3	2.3
Tyne and Wear	40,700	14.3	1.5	21,300	8.5	1.2	62,000	11.6	1.0
North East Region	77,300	11.8	0.9	46,500	8.0	0.8	123,900	10.0	0.6
Great Britain	1,417,900	8.9	0.2	906,700	6.6	0.2	2,324,600	7.9	0.1

Source: Annual Population Survey, Office for National Statistics.

Notes:

These unemployment estimates (by ONS) are from its Annual Population Survey (APS), drawn from 12 months' data.

The unemployment rate is the number of unemployed people aged 16 to 64 expressed as a percentage of the economically active population aged 16 to 64.

*Estimates are presented with an indication of their reliability, in the form of approximate 95% confidence intervals. For example, an LFS estimate and confidence interval of 6.7% +/-0.7%, means that there is 95% confidence that the true rate would be between 6.0% and 7.4%. Only in exceptional circumstances would the true rate be outside the confidence interval. The narrower the confidence interval, means the more reliable the estimate.

APS estimates are rounded to the nearest 100 by ONS. Formerly, ONS' LFS estimates were rounded to the nearest 1,000. The annual Labour Force Survey (LFS) is now incorporated into the Annual Population Survey (APS). ONS publish estimates each quarter, although all these estimates are drawn from 12 months' data. LFS - quarterly: four quarter averages are no longer updated.

Previously Table 5 showed the number of unemployed females aged 16-59.

Appendix 1: Claimant Count Statistics Current (2004) Wards

February 2011

Ward	FLOWS		CLAIMANT UNEMPLOYMENT					
	onto	off regr	Male	%*	Female	%*	Total	%*
	regr							
Birtley	36	42	135	6.5	61	3.2	196	5.0
Blaydon	86	59	246	10.5	116	5.4	362	8.0
Bridges	81	74	329	15.2	87	5.7	416	11.3
Chopwell and Rowlands Gill	66	29	210	9.3	80	3.9	290	6.7
Chowdene	51	35	180	8.1	83	4.3	263	6.4
Crawcrook and Greenside	32	29	98	4.1	48	2.2	146	3.2
Deckham	99	65	279	13.0	133	6.9	412	10.1
Dunston and Teams	105	83	315	14.5	128	7.1	443	11.2
Dunston Hill and Whickham East	51	39	107	4.8	54	2.6	161	3.8
Felling	101	81	309	18.1	164	10.9	473	14.7
High Fell	106	91	290	15.5	117	7.2	407	11.6
Lamesley	43	45	154	7.8	64	3.8	218	5.9
Lobley Hill and Bensham	102	72	300	13.3	108	5.1	408	9.3
Low Fell	29	29	76	3.2	32	1.5	108	2.4
Pelaw and Heworth	60	60	172	8.1	61	3.2	233	5.8
Ryton, Crookhill and Stella	34	39	132	6.7	52	2.7	184	4.7
Saltwell	91	71	278	12.6	113	6.1	391	9.6
Wardley and Leam Lane	48	51	132	6.0	53	2.7	185	4.5
Whickham North	35	40	141	6.5	66	3.6	207	5.1
Whickham South and Sunniside	39	27	80	3.5	40	1.9	120	2.7
Windy Nook and Whitehills	70	55	193	8.0	86	4.2	279	6.2
Winlaton and High Spen	56	33	156	7.4	50	2.7	206	5.2
GATESHEAD	1,421	1,149	4,312	9.1	1,796	4.3	6,108	6.8
Benwell and Scotswood	129	116	441	13.9	184	6.2	625	10.1
Blakelaw	89	91	260	8.9	113	4.7	373	7.0
Byker	186	139	513	18.0	227	9.4	740	14.0
Castle	57	40	139	4.7	55	2.0	194	3.4
Dene	33	28	75	2.6	35	1.4	110	2.0
Denton	71	63	214	7.9	92	4.0	306	6.1
East Gosforth	29	26	69	2.6	37	1.5	106	2.1
Elswick	187	183	610	17.8	205	9.1	815	14.4
Fawdon	81	84	268	11.0	112	5.3	380	8.3
Fenham	69	59	214	7.6	107	4.6	321	6.2
Kenton	106	81	309	11.2	150	6.3	459	8.9
Lemington	60	62	211	7.7	74	2.9	285	5.4
Newburn	64	67	215	8.7	72	3.2	287	6.0
North Heaton	50	43	126	4.7	57	2.5	183	3.7
North Jesmond	29	20	65	2.5	26	1.2	91	1.9
Ouseburn	96	63	264	9.2	77	3.3	341	6.6
Parklands	30	23	71	2.6	38	1.6	109	2.1
South Heaton	105	86	230	8.1	100	4.6	330	6.6
South Jesmond	32	30	102	4.1	38	1.8	140	3.1
Walker	173	123	565	22.6	230	12.0	795	18.0
Walkergate	86	75	318	12.4	123	5.6	441	9.3
Westerhope	41	34	96	4.0	39	1.8	135	3.0
Westgate	96	101	344	14.7	124	6.4	468	10.9
West Gosforth	29	23	64	2.3	31	1.3	95	1.8
Wingrove	93	65	321	10.7	124	5.7	445	8.6
Woolsington	65	66	236	8.9	104	4.5	340	6.9
NEWCASTLE	2,086	1,791	6,340	8.9	2,574	4.3	8,914	6.8

Source: Office for National Statistics, Tyne & Wear Research and Information

Notes: * Rates are the number of unemployed as a percentage of the estimated labour force (the economically active population, aged 16-64), at mid-2009 (TWRI ests. based on ONS population estimates).

February 2011

Ward	FLOWS		CLAIMANT UNEMPLOYMENT					
	onto		Male	%*	Female	%*	Total	%*
	regr	off regr						
Battle Hill	65	66	233	7.8	107	4.0	340	6.0
Benton	50	34	152	6.0	64	2.7	216	4.4
Camperdown	66	65	222	7.8	102	3.9	324	6.0
Chirton	113	102	478	16.6	172	6.8	650	12.0
Collingwood	87	58	261	9.9	124	5.4	385	7.8
Cullercoats	21	26	116	5.2	47	2.3	163	3.8
Howdon	75	89	376	13.8	148	6.4	524	10.4
Killingworth	45	36	144	4.8	62	2.4	206	3.7
Longbenton	82	61	242	10.1	94	3.9	336	7.0
Monkseaton North	31	19	85	3.4	35	1.4	120	2.5
Monkseaton South	41	22	109	4.4	63	2.7	172	3.6
Northumberland	53	58	159	6.7	71	3.3	230	5.1
Preston	37	34	108	4.5	55	2.5	163	3.5
Riverside	116	72	551	19.4	202	8.6	753	14.5
St Mary's	13	12	57	2.7	19	1.1	76	2.0
Tynemouth	39	40	167	6.2	69	2.7	236	4.5
Valley	72	58	194	7.2	92	3.8	286	5.6
Wallsend	97	85	426	14.7	127	4.9	553	10.1
Weetslade	39	38	131	5.5	49	2.2	180	3.9
Whitley Bay	58	48	201	7.8	70	2.9	271	5.5
NORTH TYNESIDE	1,200	1,023	4,412	8.5	1,772	3.8	6,184	6.2
Beacon and Bents	116	94	374	15.5	169	9.0	543	12.7
Bede	78	73	246	12.1	96	5.7	342	9.2
Biddick and All Saints	120	117	345	16.9	203	11.1	548	14.2
Boldon Colliery	59	65	206	8.0	101	4.5	307	6.4
Cleadon and East Boldon	23	25	69	3.0	28	1.4	97	2.3
Cleadon Park	49	56	189	12.8	89	6.6	278	9.9
Felgate and Hedworth	60	66	230	11.0	94	5.2	324	8.3
Harton	76	59	221	10.3	108	5.9	329	8.3
Hebburn North	77	71	266	11.1	117	5.6	383	8.5
Hebburn South	55	56	184	9.0	80	4.5	264	6.9
Horsley Hill	67	67	184	8.6	91	5.0	275	7.0
Monkton	64	69	223	10.3	107	5.6	330	8.1
Primrose	86	108	320	15.5	111	6.5	431	11.4
Simonside and Rekendyke	123	110	363	15.5	188	10.7	551	13.4
Westoe	56	58	180	7.3	66	3.3	246	5.5
West Park	72	67	198	8.4	74	3.7	272	6.2
Whitburn and Marsden	43	41	137	7.5	58	3.7	195	5.7
Whiteleas	71	81	217	9.9	98	5.4	315	7.8
SOUTH TYNESIDE	1,295	1,283	4,152	10.6	1,878	5.7	6,030	8.4

Source: Office for National Statistics, Tyne & Wear Research and Information

Notes: * Rates are the number of unemployed as a percentage of the estimated labour force (the economically active population, aged 16-64), at mid-2009 (TWRI ests. based on ONS population estimates).

February 2011

Ward	FLOWS		CLAIMANT UNEMPLOYMENT					
	onto		Male		Female		Total	%*
	regr	off regr		%*		%*		
Barnes	57	58	185	6.6	90	3.6	275	5.2
Castle	93	86	309	10.5	165	6.8	474	8.8
Copt Hill	56	74	203	7.2	97	4.0	300	5.7
Doxford	63	60	162	5.6	75	2.9	237	4.4
Fulwell	47	51	114	3.9	64	2.4	178	3.2
Hendon	199	197	716	27.3	219	9.6	935	19.0
Hetton	77	74	217	7.9	105	4.7	322	6.5
Houghton	74	80	211	7.4	77	3.1	288	5.4
Milfield	102	93	315	10.7	122	5.0	437	8.1
Pallion	138	106	400	16.7	172	8.2	572	12.7
Redhill	104	117	346	12.5	183	7.8	529	10.3
Ryhope	70	75	203	7.7	122	5.1	325	6.5
St Anne's	91	95	324	12.4	130	5.4	454	9.0
St Chad's	53	54	201	9.0	94	4.5	295	6.8
St Michael's	68	73	252	8.5	110	4.4	362	6.7
St Peter's	54	66	223	7.3	91	3.6	314	5.6
Sandhill	110	97	339	13.4	153	6.9	492	10.3
Shiney Row	81	73	255	7.9	97	3.3	352	5.7
Silksworth	95	85	265	9.8	114	4.4	379	7.2
Southwick	97	110	386	15.8	156	7.5	542	12.0
Washington Central	77	74	204	6.5	95	3.3	299	4.9
Washington East	70	61	176	5.5	91	3.2	267	4.4
Washington North	121	95	346	11.2	185	7.0	531	9.3
Washington South	62	59	150	4.5	74	2.6	224	3.6
Washington West	64	54	195	6.1	89	3.1	284	4.7
SUNDERLAND	2,123	2,067	6,697	9.4	2,970	4.8	9,667	7.2
TYNE AND WEAR	8,125	7,313	25,913	9.2	10,990	4.5	36,903	7.0

Source: Office for National Statistics, Tyne & Wear Research and Information

Notes: * Rates are the number of unemployed as a percentage of the estimated labour force (the economically active population, aged 16-64), at mid-2009 (TWRI ests. based on ONS population estimates).