

# Tables of Unemployment in Tyne & Wear: December 2010



Published: January 2011  
EU11/01a

The claimant count reports numbers qualifying for benefits as a result of unemployment and is subject to the associated administrative system.

**Table 1: Change in Total Claimant Count: Seasonally Adjusted\*:  
December 2010**

(Workforce rates)<sup>#</sup>

	Total	Rate %	Change since previous:			
			Month	%	Year	%
North East Region	80,300	6.6 (w)	-500	-0.6	-6,200	-7.2
Great Britain	1,398,100	4.4 (w)	-4,400	-0.3	-148,200	-9.6
United Kingdom	1,456,600	4.5 (w)	-4,100	-0.3	-144,000	-9.0

Source: Office for National Statistics

**Notes:**

\* The seasonally adjusted series takes account of previous changes which have affected the unemployment count so that the whole series over time is consistent with current figures. Seasonally adjusted figures are not available below regional level. Claimants aged under 18 are excluded. Figures in this table are provisional.

# The national and regional claimant count rates in Table 1 are the number of unemployed as a percentage of the estimated total workforce (the sum of unemployed claimants, employees in employment, self-employed, HM Forces and participants on work-related government training programmes), at mid-2009.

In January 2003, the Office for National Statistics (ONS) withdrew workforce-based claimant count rates for sub-regional areas, however, they remain available for regions and countries. The workforce-based rates, below regions, were replaced with a new residence-based measure. The claimant count, as a 'proportion' of the resident population (aged 16 - 64), are given in Table 3 and are named 'claimant count proportions'. TWRI's residence-based rates (which use the economically active as the denominator) are given in Table 2 (overleaf).

**Table 2: National, Regional and Local Claimant Count\* and Change, Unadjusted: December 2010**

	Male	Rate%	Female	Rate%	Total	Rate%	Change since previous month:		Change since previous year:	
							Number	%	Number	%
Gateshead	3,983	8.5 R	1,525	3.8 R	5,508	6.4 R	54	1.0	-565	-9.3
Newcastle	5,943	8.9 R	2,229	4.1 R	8,172	6.7 R	-85	-1.0	-577	-6.6
North Tyneside	4,197	8.1 R	1,527	3.5 R	5,724	6.0 R	60	1.1	-170	-2.9
South Tyneside	4,162	11.0 R	1,679	5.5 R	5,841	8.5 R	-27	-0.5	-749	-11.4
Sunderland	6,568	9.4 R	2,653	4.5 R	9,221	7.2 R	10	0.1	-1,036	-10.1
<b>Tyne and Wear</b>	<b>24,853</b>	<b>9.1 R</b>	<b>9,613</b>	<b>4.2 R</b>	<b>34,466</b>	<b>6.9 R</b>	<b>12</b>	<b>0.0</b>	<b>-3,097</b>	<b>-8.2</b>
<b>North East</b>	<b>57,722</b>	<b>8.7 W</b>	<b>21,687</b>	<b>3.9 W</b>	<b>79,409</b>	<b>6.5 W</b>	<b>924</b>	<b>1.2</b>	<b>-6,216</b>	<b>-7.3</b>
<b>Great Britain</b>	<b>959,188</b>	<b>5.6 W</b>	<b>409,122</b>	<b>2.8 W</b>	<b>1,368,310</b>	<b>4.3 W</b>	<b>11,871</b>	<b>0.9</b>	<b>-145,611</b>	<b>-9.6</b>
<b>United Kingdom</b>	<b>1,001,847</b>	<b>5.7 W</b>	<b>423,345</b>	<b>2.8 W</b>	<b>1,425,192</b>	<b>4.4 W</b>	<b>11,927</b>	<b>0.8</b>	<b>-141,813</b>	<b>-9.0</b>

Source: Office for National Statistics, Tyne and Wear Research and Information

**Notes:**

\* Count of claimants of Jobseekers' Allowance

R = Residence-based. District and county claimant count rates are the number of unemployed as a percentage of the estimated labour force (the economically active population), mid-2007 (TWRI ests based on ONS population ests and are Male 16-64, Female 16-59). These are new denominators from May 2009 data.

W = Workforce-based. National and regional claimant count rates are the number of unemployed as a percentage of the estimated total workforce (the sum of unemployed claimants, employees in employment, self-employed, HM Forces and participants on work-related government training programmes), at mid-2009.

**Caution:**

District and Tyne & Wear numbers in Table 2 are calculated using current (2004) wards. These numbers may vary slightly from figures extracted direct from NOMISWEB, which are based on 1991 wards and are no longer in complete alignment with current Tyne & Wear boundaries.

**Table 3: National, Regional and Local Claimant Count\*, Unadjusted: December 2010**

(Resident PWA-based proportions)

	Male	Percentage of population #	Female	Percentage of population #	Total	Percentage of population #
Gateshead	3,983	6.5	1,525	2.5	5,508	4.5
Newcastle	5,943	6.4	2,229	2.4	8,172	4.4
North Tyneside	4,197	6.7	1,527	2.4	5,724	4.5
South Tyneside	4,162	8.6	1,679	3.4	5,841	6.0
Sunderland	6,568	7.2	2,653	2.9	9,221	5.0
<b>Tyne and Wear</b>	<b>24,853</b>	<b>7.0</b>	<b>9,613</b>	<b>2.7</b>	<b>34,466</b>	<b>4.8</b>
<b>North East Region</b>	<b>57,722</b>	<b>6.9</b>	<b>21,687</b>	<b>2.6</b>	<b>79,409</b>	<b>4.7</b>
<b>Great Britain</b>	<b>959,188</b>	<b>4.9</b>	<b>409,122</b>	<b>2.1</b>	<b>1,368,310</b>	<b>3.5</b>
<b>United Kingdom</b>	<b>1,001,847</b>	<b>5.0</b>	<b>423,345</b>	<b>2.1</b>	<b>1,425,192</b>	<b>3.6</b>

Source: Office for National Statistics, Tyne and Wear Research and Information

**Notes:**

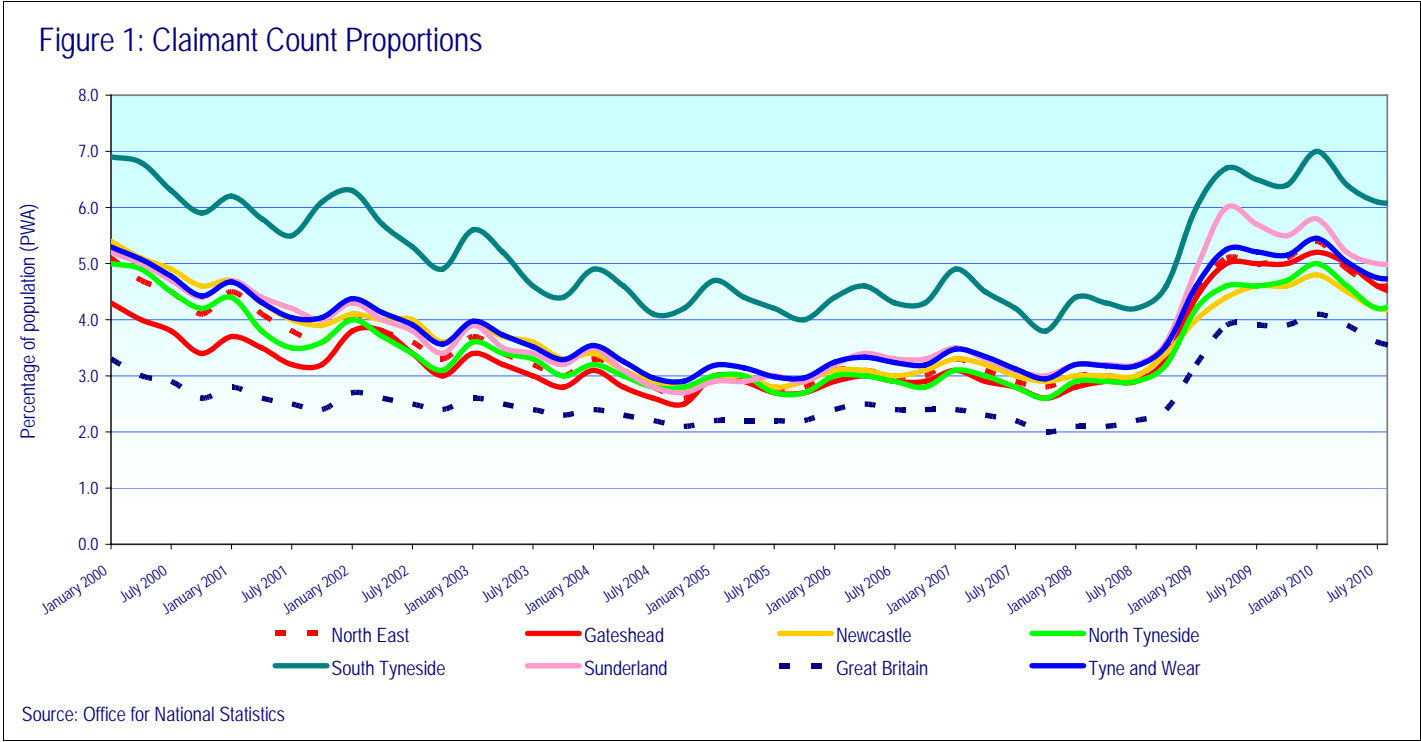
\* Count of claimants of Jobseekers' Allowance

District and Tyne & Wear numbers in Table 3 are calculated using current (2004) wards. These numbers may vary slightly from figures extracted direct from NOMISWEB, which are based on 1991 wards.

# Claimant count figures given in Table 3 are expressed as a proportion of the resident population of working age (16-64). In order to ensure consistency with District and Tyne & Wear boundaries, the population of working age (PWA) figures are calculated using the mid-2007 resident population aged 16-64 (sum of CAS wards population of working age figures).

The percentage figures in Table 3 are referred to as 'proportions' to distinguish them from the workforce-based rates, which are available at region/country level. On average, the 'proportions' are around a fifth smaller than the workforce rates, due to the wider denominators.

Note: From July 2010 data, the denominators have been widened to age 64. Previously, for women it was up to age 59. This new wider definition of the population of working age (PWA) has reduced the claimant count proportion for women by about 0.3pp (or about a tenth) and that for totals by about 0.2pp.



**Notes:**  
Claimant count proportions (residence-based proportions of 16-64Population) are given for January, April, July and October.

**Caution:**  
Not seasonally adjusted, so shows seasonal rises normally in January.

**Table 4: National, Regional and Local Benefit Claimants**

	Benefit Claimants - working age client group* May 2010					
	% of PWA		% of PWA		% of PWA	
	Male	#	Female	#	Total	#
Gateshead	13,350	21.9	10,790	17.5	24,140	19.7
Newcastle	18,170	19.5	15,100	16.5	33,270	18.0
North Tyneside	11,630	18.6	9,770	15.2	21,400	16.9
South Tyneside	11,840	24.6	9,570	19.6	21,420	22.1
Sunderland	21,180	23.2	17,630	19.0	38,810	21.1
<b>Tyne and Wear</b>	<b>76,180</b>	<b>21.4</b>	<b>62,870</b>	<b>17.5</b>	<b>139,040</b>	<b>19.4</b>
<b>North East Region</b>	<b>172,660</b>	<b>20.6</b>	<b>145,190</b>	<b>17.2</b>	<b>317,840</b>	<b>18.9</b>
<b>Great Britain</b>	<b>2,981,730</b>	<b>15.3</b>	<b>2,749,730</b>	<b>14.1</b>	<b>5,731,460</b>	<b>14.7</b>
	Employment and Support Allowance Claimants** May 2010					
	% of PWA		% of PWA		% of PWA	
	Male	#	Female	#	Total	#
Gateshead	1,560	2.6	1,000	1.6	2,550	2.1
Newcastle	2,000	2.1	1,400	1.5	3,400	1.8
North Tyneside	1,330	2.1	990	1.5	2,330	1.8
South Tyneside	1,290	2.7	940	1.9	2,230	2.3
Sunderland	2,310	2.5	1,650	1.8	3,960	2.2
<b>Tyne and Wear</b>	<b>8,490</b>	<b>2.4</b>	<b>5,980</b>	<b>1.7</b>	<b>14,470</b>	<b>2.0</b>
<b>North East Region</b>	<b>18,140</b>	<b>2.2</b>	<b>12,620</b>	<b>1.5</b>	<b>30,760</b>	<b>1.8</b>
<b>Great Britain</b>	<b>301,680</b>	<b>1.5</b>	<b>225,440</b>	<b>1.2</b>	<b>527,120</b>	<b>1.4</b>
	Incapacity/Severe Disablement Allowance*** May 2010					
	% of PWA		% of PWA		% of PWA	
	Male	#	Female	#	Total	#
Gateshead	3,840	6.3	2,090	3.4	5,940	4.8
Newcastle	4,500	4.8	2,470	2.7	6,960	3.8
North Tyneside	3,080	4.9	1,930	3.0	5,010	3.9
South Tyneside	3,040	6.3	1,540	3.2	4,580	4.7
Sunderland	6,380	7.0	3,730	4.0	10,110	5.5
<b>Tyne and Wear</b>	<b>20,840</b>	<b>5.9</b>	<b>11,760</b>	<b>3.3</b>	<b>32,600</b>	<b>4.6</b>
<b>North East Region</b>	<b>49,980</b>	<b>6.0</b>	<b>29,640</b>	<b>3.5</b>	<b>79,620</b>	<b>4.7</b>
<b>Great Britain</b>	<b>768,720</b>	<b>3.9</b>	<b>509,550</b>	<b>2.6</b>	<b>1,278,270</b>	<b>3.3</b>
Source: Department for Work and Pensions						

Over the period from August 2008, in Tyne & Wear, Benefit Claimants (Working age Client Group) were up by 8,810 (or up +6.8%). ESA claimants reached 14,470 – which explains the 9,050 (-21.7%) fall in IB/SDA numbers.

For information: Data for August 2008 is the last quarterly snapshot before the introduction of the new ESA (Employment and Support Allowance) which replaced Incapacity Benefit for new claimants from Oct. 2008.

Notes Overleaf:

The data are based on 100% of claims so are not subject to any sampling error. Figures are rounded to the nearest 10, and those below 5 are suppressed as statistically unreliable.

Data relate to a single point in time and provide a snapshot of claims at that point. Data are not seasonally adjusted.

- \* Benefit claimants – working age client group includes benefit claimants aged 16-64 years, on Income Support (IS) only, Job Seekers Allowance (JSA) only, Incapacity Benefit (IB) only, IS and IB, DLA and IB, DLA, IS and IB, Disability Living Allowance (DLA) only, DLA, IS and SDA, DLA and IS, DLA and SDA, IS and SDA, Severe Disablement Allowance (SDA) only, DLA and JSA, other combinations. Data includes all durations and all family types.
- \*\* The figures relating to Employment Support Allowance have been thoroughly quality assured to National Statistics standard; however it should be noted that this is a new benefit using a new data source which may not have reached steady state in terms of operational processing. Hence most recent data shown is provisional. Tyne & Wear fig. is sum of districts. GB fig. is sum of GORs (regions).
- \*\*\* Count of those in **receipt** of Incapacity Benefit or Severe Disablement Allowance, aged 16-64, for all durations.
- # Benefit claimant count figures given in Table 4 are expressed as a proportion of the resident population of working age (16-64). In order to ensure consistency with District and Tyne & Wear boundaries, the population of working age (PWA) figures are derived from the mid-2001 population estimates (sum of CAS wards population of working age figures).

## INTERNATIONAL LABOUR ORGANISATION (ILO) MEASURE OF UNEMPLOYMENT

The ILO definition of unemployment refers to people “without a job who were available to start work in the two weeks following their LFS interview and had looked for work in the four weeks prior to interview (or were waiting to take up a job they had already obtained)”. This has been the official, government, definition of unemployment since 1998.

Note: the estimates of District unemployment rates can be particularly volatile, with confidence intervals of about plus or minus 3 percentage points.

**Table 5: National, Regional and Local ILO Unemployment, Unadjusted: 12 months Jul 2009-Jun 2010**

	Male	%	Confidence*	Female	%	Confidence*	Total	%	Confidence*
Gateshead	5,000	10.2	3.1	3,700	8.4	2.7	8,700	9.3	2.1
Newcastle	11,800	16.6	3.7	4,100	6.9	2.7	15,900	12.1	2.4
North Tyneside	6,100	11.1	3.0	3,300	6.6	2.4	9,400	9.0	1.9
South Tyneside	8,100	21.4	4.0	3,300	9.6	2.9	11,300	15.8	2.6
Sunderland	9,900	13.5	3.3	6,900	11.0	3.2	16,800	12.3	2.3
<b>Tyne and Wear</b>	<b>40,700</b>	<b>14.3</b>	<b>1.5</b>	<b>21,300</b>	<b>8.5</b>	<b>1.2</b>	<b>62,000</b>	<b>11.6</b>	<b>1.0</b>
<b>North East Region</b>	<b>77,300</b>	<b>11.8</b>	<b>0.9</b>	<b>46,500</b>	<b>8.0</b>	<b>0.8</b>	<b>123,900</b>	<b>10.0</b>	<b>0.6</b>
<b>Great Britain</b>	<b>1,417,900</b>	<b>8.9</b>	<b>0.2</b>	<b>906,700</b>	<b>6.6</b>	<b>0.2</b>	<b>2,324,600</b>	<b>7.9</b>	<b>0.1</b>

Source: Annual Population Survey, Office for National Statistics.

### Notes:

These unemployment estimates (by ONS) are from its Annual Population Survey (APS), drawn from 12 months' data.

The unemployment rate is the number of unemployed people aged 16 to 64 expressed as a percentage of the economically active population aged 16 to 64.

\*Estimates are presented with an indication of their reliability, in the form of approximate 95% confidence intervals. For example, an LFS estimate and confidence interval of 6.7% +/-0.7%, means that there is 95% confidence that the true rate would be between 6.0% and 7.4%. Only in exceptional circumstances would the true rate be outside the confidence interval. The narrower the confidence interval, means the more reliable the estimate.

APS estimates are rounded to the nearest 100 by ONS. Formerly, ONS' LFS estimates were rounded to the nearest 1,000. The annual Labour Force Survey (LFS) is now incorporated into the Annual Population Survey (APS). ONS publish estimates each quarter, although all these estimates are drawn from 12 months' data. LFS - quarterly: four quarter averages are no longer updated.

Previously Table 5 showed the number of unemployed females aged 16-59.

## Appendix 1: Claimant Count Statistics Current (2004) Wards

December 2010

Ward	FLOWS		CLAIMANT UNEMPLOYMENT					
	onto	off regr	Male	%*	Female	%*	Total	%*
	regr							
Birtley	36	42	126	6.1	50	2.8	176	4.6
Blaydon	51	55	215	9.6	90	4.6	305	7.2
Bridges	68	59	303	15.2	77	5.5	380	11.2
Chopwell and Rowlands Gill	42	47	170	7.6	75	4.0	245	6.0
Chowdene	51	27	155	7.1	74	4.1	229	5.7
Crawcrook and Greenside	28	29	93	4.0	38	1.9	131	3.0
Deckham	65	61	251	11.8	100	5.3	351	8.8
Dunston and Teams	77	89	315	15.1	94	5.6	409	10.9
Dunston Hill and Whickham East	33	26	105	4.8	36	1.8	141	3.4
Felling	81	82	311	18.9	126	9.1	437	14.4
High Fell	81	66	273	15.0	99	6.4	372	11.1
Lamesley	44	32	141	7.1	66	4.0	207	5.7
Lobley Hill and Bensham	73	55	271	12.3	88	4.5	359	8.6
Low Fell	23	23	73	3.1	27	1.3	100	2.3
Pelaw and Heworth	55	45	160	7.6	72	4.0	232	5.9
Ryton, Crookhill and Stella	32	30	127	6.4	48	2.7	175	4.6
Saltwell	72	70	248	11.0	104	5.7	352	8.6
Wardley and Leam Lane	33	38	124	5.7	60	3.3	184	4.6
Whickham North	42	37	145	6.8	60	3.3	205	5.2
Whickham South and Sunniside	23	26	76	3.3	27	1.4	103	2.4
Windy Nook and Whitehills	55	42	171	7.1	72	3.6	243	5.5
Winlaton and High Spen	27	34	130	6.1	42	2.4	172	4.5
<b>GATESHEAD</b>	<b>1,092</b>	<b>1,015</b>	<b>3,983</b>	<b>8.5</b>	<b>1,525</b>	<b>3.8</b>	<b>5,508</b>	<b>6.4</b>
Benwell and Scotswood	117	121	415	13.7	163	5.9	578	10.0
Blakelaw	71	71	261	9.6	107	4.9	368	7.5
Byker	156	145	469	17.2	200	9.0	669	13.5
Castle	31	42	116	4.1	43	1.7	159	3.0
Dene	27	25	86	3.3	26	1.1	112	2.3
Denton	59	67	206	8.1	76	3.6	282	6.0
East Gosforth	25	31	62	2.5	38	1.7	100	2.1
Elswick	137	141	606	19.8	196	9.8	802	15.8
Fawdon	58	51	245	10.6	98	4.9	343	8.0
Fenham	81	64	199	7.6	96	4.4	295	6.1
Kenton	85	83	287	11.3	116	5.5	403	8.7
Lemington	52	60	212	8.1	64	2.7	276	5.5
Newburn	58	46	204	8.9	55	2.7	259	6.0
North Heaton	40	48	109	4.3	55	2.6	164	3.5
North Jesmond	18	19	54	2.2	24	1.2	78	1.8
Ouseburn	57	61	237	9.2	70	3.5	307	6.7
Parklands	27	31	68	2.8	34	1.6	102	2.2
South Heaton	60	101	205	7.8	76	3.8	281	6.0
South Jesmond	23	30	99	4.2	31	1.7	130	3.1
Walker	133	123	535	22.7	188	10.5	723	17.4
Walkergate	70	50	282	11.7	103	5.2	385	8.8
Westerhope	30	44	80	3.4	41	2.1	121	2.8
Westgate	92	82	346	15.6	103	6.2	449	11.6
West Gosforth	17	27	61	2.3	27	1.3	88	1.9
Wingrove	83	80	279	10.3	104	5.1	383	8.1
Woolsington	67	49	220	8.8	95	4.4	315	6.8
<b>NEWCASTLE</b>	<b>1,674</b>	<b>1,692</b>	<b>5,943</b>	<b>8.9</b>	<b>2,229</b>	<b>4.1</b>	<b>8,172</b>	<b>6.7</b>

Source: Office for National Statistics, Tyne &amp; Wear Research and Information

Notes: \* Rates are the number of unemployed as a percentage of the estimated labour force (the economically active population, Male 16-64, Female 16-59), at mid-2007 (TWRI ests. based on ONS population estimates)



## December 2010

Ward	FLOWS		CLAIMANT UNEMPLOYMENT					
	onto		Male	%*	Female	%*	Total	%*
	regr	off regr						
Battle Hill	70	53	259	8.6	99	3.9	358	6.5
Benton	38	40	136	5.4	45	2.0	181	3.8
Camperdown	54	52	192	6.7	78	3.2	270	5.1
Chirton	114	86	456	16.2	158	6.6	614	11.8
Collingwood	50	53	248	9.5	102	4.6	350	7.3
Cullercoats	27	30	106	4.7	45	2.3	151	3.6
Howdon	83	66	362	13.5	137	6.3	499	10.3
Killingworth	39	50	131	4.4	51	2.1	182	3.4
Longbenton	73	63	223	9.7	73	3.4	296	6.6
Monkseaton North	32	28	80	3.2	30	1.4	110	2.4
Monkseaton South	34	31	111	4.7	62	2.9	173	3.8
Northumberland	39	32	161	6.8	56	2.8	217	4.9
Preston	25	39	98	4.1	38	1.8	136	3.0
Riverside	98	89	493	17.8	166	7.6	659	13.3
St Mary's	15	21	59	2.8	23	1.4	82	2.2
Tynemouth	47	28	169	6.2	57	2.4	226	4.5
Valley	61	43	182	7.4	78	3.7	260	5.7
Wallsend	74	59	429	15.0	121	5.0	550	10.4
Weetslade	38	44	115	4.7	43	2.0	158	3.5
Whitley Bay	44	57	187	7.3	65	2.9	252	5.3
<b>NORTH TYNESIDE</b>	<b>1,055</b>	<b>964</b>	<b>4,197</b>	<b>8.1</b>	<b>1,527</b>	<b>3.5</b>	<b>5,724</b>	<b>6.0</b>
Beacon and Bents	105	121	362	15.6	134	7.9	496	12.4
Bede	77	71	252	12.8	84	5.3	336	9.5
Biddick and All Saints	101	121	329	16.5	174	10.1	503	13.5
Boldon Colliery	63	66	212	8.4	89	4.2	301	6.5
Cleadon and East Boldon	19	20	62	2.8	27	1.5	89	2.2
Cleadon Park	57	56	183	12.5	88	7.3	271	10.1
Felgate and Hedworth	68	59	231	11.0	78	4.5	309	8.1
Harton	76	61	214	10.1	89	5.3	303	8.0
Hebburn North	75	78	269	12.1	103	5.4	372	9.0
Hebburn South	52	63	185	9.3	74	4.7	259	7.2
Horsley Hill	61	67	199	9.7	78	4.7	277	7.5
Monkton	76	78	240	11.6	93	5.3	333	8.7
Primrose	76	77	322	16.2	110	7.1	432	12.2
Simonside and Rekendyke	100	98	367	15.9	172	9.9	539	13.3
Westoe	57	45	177	7.3	69	3.6	246	5.7
West Park	63	59	197	8.6	61	3.3	258	6.2
Whitburn and Marsden	46	46	140	7.9	58	3.9	198	6.1
Whiteleas	80	64	221	10.5	98	5.8	319	8.4
<b>SOUTH TYNESIDE</b>	<b>1,252</b>	<b>1,250</b>	<b>4,162</b>	<b>11.0</b>	<b>1,679</b>	<b>5.5</b>	<b>5,841</b>	<b>8.5</b>

Source: Office for National Statistics, Tyne & Wear Research and Information

Notes: \* Rates are the number of unemployed as a percentage of the estimated labour force (the economically active population, Male 16-64, Female 16-59), at mid-2007 (TWRI ests. based on ONS population estimates).

December 2010

Ward	FLOWS		CLAIMANT UNEMPLOYMENT					
	onto		Male		Female		Total	%*
	regr	off regr		%*		%*		
Barnes	64	85	192	7.0	74	3.1	266	5.2
Castle	86	72	310	10.8	137	5.9	447	8.6
Copt Hill	68	71	221	7.7	99	4.3	320	6.2
Doxford	39	56	142	5.0	61	2.5	203	3.8
Fulwell	53	40	115	4.0	53	2.1	168	3.1
Hendon	185	179	696	27.6	232	10.8	928	19.9
Hetton	79	61	231	8.6	81	3.9	312	6.6
Houghton	60	56	210	7.6	76	3.2	286	5.6
Milfield	86	71	292	10.5	109	4.6	401	7.8
Pallion	97	115	366	14.7	130	6.3	496	10.9
Redhill	107	80	359	13.2	174	7.8	533	10.8
Ryhope	71	81	206	8.1	112	4.9	318	6.6
St Anne's	88	89	322	12.8	134	6.1	456	9.7
St Chad's	59	58	204	9.4	72	3.6	276	6.7
St Michael's	73	78	255	9.0	83	3.6	338	6.6
St Peter's	76	63	223	7.6	86	3.6	309	5.8
Sandhill	103	106	324	13.0	131	6.5	455	10.1
Shiney Row	86	54	262	8.2	74	2.7	336	5.6
Silksworth	65	81	245	9.1	114	4.7	359	7.0
Southwick	90	77	371	15.5	138	7.1	509	11.7
Washington Central	74	73	185	5.9	85	3.2	270	4.6
Washington East	68	65	177	5.6	85	3.2	262	4.5
Washington North	108	102	335	10.8	178	7.1	513	9.1
Washington South	56	73	152	4.5	68	2.5	220	3.6
Washington West	70	73	173	5.5	67	2.5	240	4.1
SUNDERLAND	2,011	1,959	6,568	9.4	2,653	4.5	9,221	7.2
TYNE AND WEAR	7,084	6,880	24,853	9.1	9,613	4.2	34,466	6.9

Source: Office for National Statistics, Tyne &amp; Wear Research and Information

Notes: \* Rates are the number of unemployed as a percentage of the estimated labour force (the economically active population, Male 16-64, Female 16-59), at mid-2007 (TWRI ests. based on ONS population estimates).