



The claimant count reports numbers qualifying for benefits as a result of unemployment and is subject to the associated administrative system.

**Table 1: Change in Total Claimant Count: Seasonally Adjusted*:
August 2010**

(Workforce rates)[#]

	Total	Rate %	Change since previous:			
			Month	%	Year	%
North East Region	80,300	6.6 (w)	400	0.5	-6,300	-7.3
Great Britain	1,408,500	4.5 (w)	1,400	0.1	-141,100	-9.1
United Kingdom	1,466,300	4.5 (w)	2,300	0.2	-135,500	-8.5

Source: Office for National Statistics

Notes:

* The seasonally adjusted series takes account of previous changes which have affected the unemployment count so that the whole series over time is consistent with current figures. Seasonally adjusted figures are not available below regional level. Claimants aged under 18 are excluded. Figures in this table are provisional.

The national and regional claimant count rates in Table 1 are the number of unemployed as a percentage of the estimated total workforce (the sum of unemployed claimants, employees in employment, self-employed, HM Forces and participants on work-related government training programmes), at mid-2006.

In January 2003, the Office for National Statistics (ONS) withdrew workforce-based claimant count rates for sub-regional areas, however, they remain available for regions and countries. The workforce-based rates, below regions, were replaced with a new residence-based measure. The claimant count, as a 'proportion' of the resident population (aged 16 - 64), are given in Table 3 and are named 'claimant count proportions'. TWRI's residence-based rates (which use the economically active as the denominator) are given in Table 2 (overleaf).

Table 2: National, Regional and Local Claimant Count* and Change, Unadjusted: August 2010

	Male	Rate%	Female	Rate%	Total	Rate%	Change since previous month:		Change since previous year:	
							Number	%	Number	%
Gateshead	4,017	8.6 R	1,601	4.0 R	5,618	6.5 R	0	0.0	-578	-9.3
Newcastle	6,141	9.2 R	2,420	4.4 R	8,561	7.1 R	177	2.1	-467	-5.2
North Tyneside	4,000	7.8 R	1,516	3.4 R	5,516	5.8 R	88	1.6	-449	-7.5
South Tyneside	4,202	11.1 R	1,777	5.8 R	5,979	8.7 R	-63	-1.0	-313	-5.0
Sunderland	6,583	9.4 R	2,789	4.8 R	9,372	7.3 R	25	0.3	-1,179	-11.2
Tyne and Wear	24,943	9.1 R	10,103	4.4 R	35,046	7.0 R	227	0.6	-2,986	-7.9
North East	56,488	8.5 W	22,026	4.0 W	78,514	6.4 W	-1,591	-2.0	-5,970	-7.1
Great Britain	973,296	5.7 W	423,712	2.9 W	1,397,008	4.4 W	-50,027	-3.5	-107,109	-7.1
United Kingdom	1,016,532	5.8 W	439,491	2.9 W	1,456,023	4.5 W	-46,132	-3.1	-97,233	-6.3

Source: Office for National Statistics, Tyne and Wear Research and Information

Notes:

* Count of claimants of Jobseekers' Allowance

R = Residence-based. District and county claimant count rates are the number of unemployed as a percentage of the estimated labour force (the economically active population), mid-2007 (TWRI ests based on ONS population ests and are Male 16-64, Female 16-59). These are new denominators from May 2009 data.

W = Workforce-based. National and regional claimant count rates are the number of unemployed as a percentage of the estimated total workforce (the sum of unemployed claimants, employees in employment, self-employed, HM Forces and participants on work-related government training programmes), at mid-2008.

Caution:

District and Tyne & Wear numbers in Table 2 are calculated using current (2004) wards. These numbers may vary slightly from figures extracted direct from NOMISWEB, which are based on 1991 wards and are no longer in complete alignment with current Tyne & Wear boundaries.

Table 3: National, Regional and Local Claimant Count*, Unadjusted: August 2010

(Resident PWA-based proportions)

	Male	Percentage of population #	Female	Percentage of population #	Total	Percentage of population #
Gateshead	4,017	6.6	1,601	2.6	5,618	4.6
Newcastle	6,141	6.6	2,420	2.6	8,561	4.6
North Tyneside	4,000	6.4	1,516	2.4	5,516	4.3
South Tyneside	4,202	8.7	1,777	3.6	5,979	6.2
Sunderland	6,583	7.2	2,789	3.0	9,372	5.1
Tyne and Wear	24,943	7.0	10,103	2.8	35,046	4.9
North East Region	56,488	6.7	22,026	2.6	78,514	4.7
Great Britain	973,296	5.0	423,712	2.2	1,397,008	3.6
United Kingdom	1,016,532	5.1	439,491	2.2	1,456,023	3.6

Source: Office for National Statistics, Tyne and Wear Research and Information

Notes:

* Count of claimants of Jobseekers' Allowance

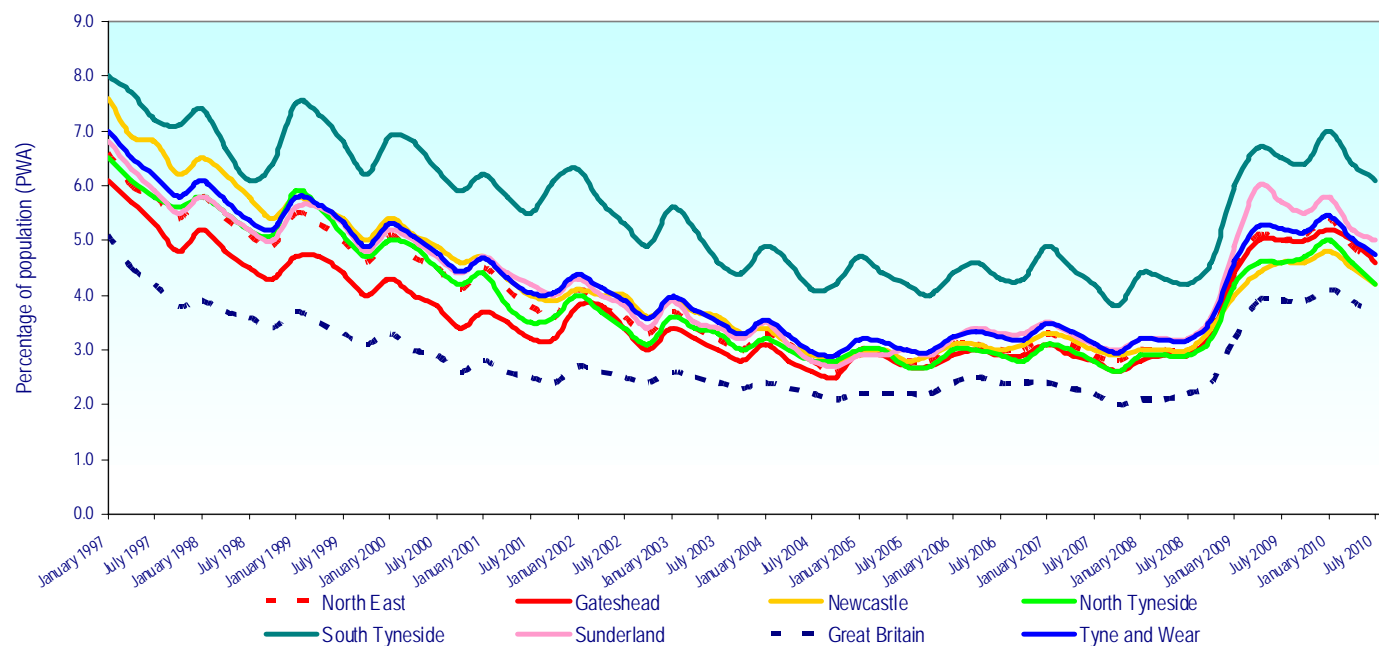
District and Tyne & Wear numbers in Table 3 are calculated using current (2004) wards. These numbers may vary slightly from figures extracted direct from NOMISWEB, which are based on 1991 wards.

Claimant count figures given in Table 3 are expressed as a proportion of the resident population of working age (16-64). In order to ensure consistency with District and Tyne & Wear boundaries, the population of working age (PWA) figures are calculated using the mid-2007 resident population aged 16-64 (sum of CAS wards population of working age figures).

The percentage figures in Table 3 are referred to as 'proportions' to distinguish them from the workforce-based rates, which are available at region/country level. On average, the 'proportions' are around a fifth smaller than the workforce rates, due to the wider denominators.

Note: From July 2010 data, the denominators have been widened to age 64. Previously, for women it was up to age 59. This new wider definition of the population of working age (PWA) has reduced the claimant count proportion for women by about 0.3pp (or about a tenth) and that for totals by about 0.2pp.

Figure 1: Claimant Count Proportions



Source: Office for National Statistics

Notes:

Claimant count proportions (residence-based proportions of 16-64Population) are given for January, April, July and October.

Caution:

Not seasonally adjusted, so shows seasonal rises normally in January.

Table 4: National, Regional and Local Benefit Claimants

	Benefit Claimants - working age client group* February 2010					
	% of PWA		% of PWA		% of PWA	
	Male	#	Female	#	Total	#
Gateshead	14,070	23.1	10,910	17.7	24,990	20.4
Newcastle	18,860	20.3	15,260	16.7	34,120	18.5
North Tyneside	12,150	19.4	9,820	15.3	21,960	17.3
South Tyneside	12,310	25.6	9,590	19.7	21,900	22.6
Sunderland	22,320	24.5	17,450	18.8	39,770	21.6
Tyne and Wear	79,710	22.4	63,030	17.6	142,740	20.0
North East Region	181,060	21.6	146,070	17.3	327,130	19.4
Great Britain	3,117,650	16.0	2,783,360	14.3	5,901,000	15.1
	Employment and Support Allowance Claimants** February 2010					
	% of PWA		% of PWA		% of PWA	
	Male	#	Female	#	Total	#
Gateshead	1,460	2.4	920	1.5	2,380	1.9
Newcastle	1,860	2.0	1,290	1.4	3,150	1.7
North Tyneside	1,190	1.9	850	1.3	2,040	1.6
South Tyneside	1,210	2.5	850	1.7	2,060	2.1
Sunderland	2,180	2.4	1,470	1.6	3,650	2.0
Tyne and Wear	7,900	2.2	5,380	1.5	13,280	1.9
North East Region	16,950	2.0	11,340	1.3	28,290	1.7
Great Britain	277,400	1.4	202,050	1.0	479,420	1.2
	Incapacity/Severe Disablement Allowance*** February 2010					
	% of PWA		% of PWA		% of PWA	
	Male	#	Female	#	Total	#
Gateshead	3,980	6.5	2,130	3.5	6,110	5.0
Newcastle	4,620	5.0	2,520	2.8	7,140	3.9
North Tyneside	3,190	5.1	1,960	3.0	5,150	4.1
South Tyneside	3,140	6.5	1,580	3.2	4,720	4.9
Sunderland	6,600	7.2	3,830	4.1	10,430	5.7
Tyne and Wear	21,530	6.0	12,020	3.3	33,540	4.7
North East Region	51,560	6.2	30,360	3.6	81,910	4.9
Great Britain	789,170	4.1	520,000	2.7	1,309,180	3.4

Source: Department for Work and Pensions

Over the period from August 2008, in Tyne & Wear, Benefit Claimants (Working age Client Group) were up by 12,510 (or up +9.6%). ESA claimants reached 13,280 – which explains the 8,110 (-19.5%) fall in IB/SDA numbers.

For information: Data for August 2008 is the last quarterly snapshot before the introduction of the new ESA (Employment and Support Allowance) which replaced Incapacity Benefit for new claimants from Oct. 2008.

Notes Overleaf:

The data are based on 100% of claims so are not subject to any sampling error. Figures are rounded to the nearest 10, and those below 5 are suppressed as statistically unreliable.

Data relate to a single point in time and provide a snapshot of claims at that point. Data are not seasonally adjusted.

- * Benefit claimants – working age client group includes benefit claimants aged 16-64 years, on Income Support (IS) only, Job Seekers Allowance (JSA) only, Incapacity Benefit (IB) only, IS and IB, DLA and IB, DLA, IS and IB, Disability Living Allowance (DLA) only, DLA, IS and SDA, DLA and IS, DLA and SDA, IS and SDA, Severe Disablement Allowance (SDA) only, DLA and JSA, other combinations. Data includes all durations and all family types.
- ** The figures relating to Employment Support Allowance have been thoroughly quality assured to National Statistics standard; however it should be noted that this is a new benefit using a new data source which may not have reached steady state in terms of operational processing. Hence most recent data shown is provisional. Tyne & Wear fig. is sum of districts. GB fig. is sum of GORs (regions).
- *** Count of those in receipt of Incapacity Benefit or Severe Disablement Allowance, aged 16-64, for all durations.
- # Benefit claimant count figures given in Table 4 are expressed as a proportion of the resident population of working age (16-64). In order to ensure consistency with District and Tyne & Wear boundaries, the population of working age (PWA) figures are derived from the mid-2001 population estimates (sum of CAS wards population of working age figures).

INTERNATIONAL LABOUR ORGANISATION (ILO) MEASURE OF UNEMPLOYMENT

The ILO definition of unemployment refers to people “without a job who were available to start work in the two weeks following their LFS interview and had looked for work in the four weeks prior to interview (or were waiting to take up a job they had already obtained)”. This has been the official, government, definition of unemployment since 1998.

Note: the estimates of District unemployment rates can be particularly volatile, with confidence intervals of about plus or minus 2 percentage points.

Table 5: National, Regional and Local ILO Unemployment, Unadjusted: 12 months Jan 2009-Dec 2009

	Male	%	Confidence*	Female	%	Confidence*	Total	%	Confidence*
Gateshead	4,000	8.1	2.7	3,200	7.5	2.6	7,300	7.8	1.9
Newcastle	12,000	18.0	3.7	4,800	7.8	2.8	16,800	13.2	2.4
North Tyneside	6,400	11.9	3.2	3,400	7.2	2.6	9,800	9.7	2.1
South Tyneside	5,800	15.3	3.6	3,200	9.5	3.0	9,000	12.6	2.4
Sunderland	9,300	12.4	3.2	6,300	9.9	3.1	15,500	11.3	2.2
Tyne and Wear	37,500	13.3	1.5	20,900	8.4	1.3	58,400	11.0	1.0
North East Region	73,800	11.3	0.9	45,500	7.9	0.8	119,300	9.7	0.6
Great Britain	1,395,600	8.7	0.2	917,400	6.7	0.2	2,313,100	7.8	0.1

Source: Annual Population Survey, Office for National Statistics.

Notes:

These unemployment estimates (by ONS) are from its Annual Population Survey (APS), drawn from 12 months' data.

The unemployment rate is the number of unemployed people aged 16 to 64 expressed as a percentage of the economically active population aged 16 to 64.

*Estimates are presented with an indication of their reliability, in the form of approximate 95% confidence intervals. For example, an LFS estimate and confidence interval of 6.7% +/-0.7%, means that there is 95% confidence that the true rate would be between 6.0% and 7.4%. Only in exceptional circumstances would the true rate be outside the confidence interval. The narrower the confidence interval, means the more reliable the estimate.

APS estimates are rounded to the nearest 100 by ONS. Formerly, ONS' LFS estimates were rounded to the nearest 1,000. The annual Labour Force Survey (LFS) is now incorporated into the Annual Population Survey (APS). ONS publish estimates each quarter, although all these estimates are drawn from 12 months' data. LFS - quarterly: four quarter averages are no longer updated.

Previously Table 5 showed the number of unemployed females aged 16-59.

Appendix 1: Claimant Count Statistics Current (2004) Wards

August 2010

Ward	FLOWS		CLAIMANT UNEMPLOYMENT					
	onto	off regr	Male	%*	Female	%*	Total	%*
	regr							
Birtley	69	53	144	7.0	54	3.1	198	5.2
Blaydon	76	65	219	9.8	96	4.9	315	7.5
Bridges	111	90	305	15.3	93	6.6	398	11.7
Chopwell and Rowlands Gill	66	64	182	8.2	76	4.0	258	6.3
Chowdene	71	61	155	7.1	62	3.4	217	5.4
Crawcrook and Greenside	34	50	85	3.6	35	1.7	120	2.7
Deckham	82	95	264	12.4	117	6.2	381	9.5
Dunston and Teams	96	95	317	15.2	97	5.8	414	11.0
Dunston Hill and Whickham East	45	45	101	4.6	38	1.9	139	3.3
Felling	120	109	323	19.6	134	9.7	457	15.1
High Fell	87	93	245	13.5	102	6.6	347	10.3
Lamesley	54	63	158	7.9	60	3.7	218	6.0
Lobley Hill and Bensham	100	96	270	12.2	109	5.5	379	9.1
Low Fell	38	35	81	3.5	27	1.3	108	2.5
Pelaw and Heworth	65	74	162	7.7	71	4.0	233	6.0
Ryton, Crookhill and Stella	48	31	137	6.9	55	3.1	192	5.1
Saltwell	84	93	246	10.9	126	6.9	372	9.1
Wardley and Leam Lane	52	59	116	5.3	58	3.2	174	4.3
Whickham North	46	57	124	5.8	49	2.7	173	4.4
Whickham South and Sunniside	40	39	81	3.5	38	2.0	119	2.8
Windy Nook and Whitehills	60	54	179	7.5	65	3.3	244	5.6
Winlaton and High Spen	59	56	123	5.8	39	2.3	162	4.2
GATESHEAD	1,503	1,477	4,017	8.6	1,601	4.0	5,618	6.5
Benwell and Scotswood	126	142	423	14.0	172	6.3	595	10.3
Blakelaw	85	93	251	9.3	100	4.6	351	7.2
Byker	191	160	500	18.4	197	8.9	697	14.1
Castle	43	49	102	3.6	51	2.1	153	2.9
Dene	39	29	83	3.2	21	0.9	104	2.1
Denton	83	79	207	8.1	91	4.3	298	6.4
East Gosforth	33	27	80	3.2	41	1.9	121	2.6
Elswick	179	138	612	20.0	190	9.5	802	15.8
Fawdon	72	77	262	11.4	99	4.9	361	8.4
Fenham	80	62	203	7.8	98	4.5	301	6.3
Kenton	96	96	271	10.7	117	5.6	388	8.3
Lemington	66	71	193	7.4	83	3.5	276	5.5
Newburn	65	53	189	8.3	55	2.7	244	5.7
North Heaton	66	32	144	5.7	61	2.9	205	4.4
North Jesmond	43	37	61	2.5	47	2.4	108	2.4
Ouseburn	98	70	262	10.1	103	5.1	365	7.9
Parklands	43	37	87	3.5	36	1.7	123	2.7
South Heaton	135	103	260	9.8	107	5.3	367	7.9
South Jesmond	55	53	118	5.0	39	2.1	157	3.7
Walker	174	164	530	22.5	210	11.7	740	17.8
Walkergate	107	90	267	11.1	100	5.0	367	8.3
Westerhope	48	39	84	3.6	33	1.7	117	2.7
Westgate	105	110	347	15.7	132	7.9	479	12.4
West Gosforth	35	22	84	3.2	29	1.4	113	2.4
Wingrove	98	83	292	10.8	115	5.7	407	8.6
Woolsington	82	78	229	9.2	93	4.3	322	6.9
NEWCASTLE	2,247	1,994	6,141	9.2	2,420	4.4	8,561	7.1

Source: Office for National Statistics, Tyne & Wear Research and Information

Notes: * Rates are the number of unemployed as a percentage of the estimated labour force (the economically active population, Male 16-64, Female 16-59), at mid-2007 (TWRI ests. based on ONS population estimates)

August 2010

Ward	FLOWS		CLAIMANT UNEMPLOYMENT					
	onto		Male		Female		Total	%*
	regr	off regr		%*		%*		
Battle Hill	96	92	229	7.6	91	3.6	320	5.8
Benton	63	43	140	5.5	65	2.9	205	4.3
Camperdown	73	61	176	6.2	86	3.6	262	5.0
Chirton	138	120	433	15.4	147	6.1	580	11.1
Collingwood	89	74	251	9.6	73	3.3	324	6.7
Cullercoats	43	41	87	3.9	40	2.0	127	3.0
Howdon	109	119	328	12.2	122	5.6	450	9.3
Killingworth	61	69	140	4.7	47	1.9	187	3.5
Longbenton	81	96	236	10.2	92	4.3	328	7.3
Monkseaton North	53	41	77	3.1	34	1.6	111	2.4
Monkseaton South	41	43	100	4.2	47	2.2	147	3.2
Northumberland	64	46	164	6.9	52	2.6	216	4.9
Preston	55	38	90	3.8	43	2.1	133	3.0
Riverside	135	113	456	16.5	163	7.4	619	12.5
St Mary's	27	21	69	3.2	19	1.2	88	2.3
Tynemouth	60	64	150	5.5	70	3.0	220	4.4
Valley	52	50	176	7.2	78	3.7	254	5.6
Wallsend	117	103	404	14.1	127	5.3	531	10.1
Weetslade	50	52	117	4.8	46	2.2	163	3.6
Whitley Bay	63	65	177	6.9	74	3.3	251	5.3
NORTH TYNESIDE	1,470	1,351	4,000	7.8	1,516	3.4	5,516	5.8
Beacon and Bents	117	132	379	16.3	144	8.5	523	13.0
Bede	78	73	266	13.5	87	5.5	353	9.9
Biddick and All Saints	108	117	329	16.5	180	10.4	509	13.7
Boldon Colliery	75	75	229	9.1	84	4.0	313	6.7
Cleadon and East Boldon	33	31	64	2.9	41	2.2	105	2.6
Cleadon Park	61	77	181	12.3	89	7.4	270	10.1
Felgate and Hedworth	73	66	214	10.2	76	4.4	290	7.6
Harton	79	69	223	10.5	75	4.5	298	7.9
Hebburn North	88	74	267	12.0	120	6.2	387	9.3
Hebburn South	64	77	180	9.0	80	5.0	260	7.2
Horsley Hill	70	89	203	9.9	90	5.5	293	7.9
Monkton	99	91	236	11.4	114	6.5	350	9.1
Primrose	103	104	316	15.9	107	6.9	423	11.9
Simonside and Rekendyke	119	121	371	16.0	156	9.0	527	13.0
Westoe	64	71	164	6.8	81	4.3	245	5.7
West Park	74	72	202	8.8	90	4.8	292	7.0
Whitburn and Marsden	54	59	146	8.2	61	4.1	207	6.3
Whiteleas	80	91	232	11.0	102	6.0	334	8.8
SOUTH TYNESIDE	1,439	1,489	4,202	11.1	1,777	5.8	5,979	8.7

Source: Office for National Statistics, Tyne & Wear Research and Information

Notes: * Rates are the number of unemployed as a percentage of the estimated labour force (the economically active population, Male 16-64, Female 16-59), at mid-2007 (TWRI ests. based on ONS population estimates).

August 2010

Ward	FLOWS		CLAIMANT UNEMPLOYMENT					
	onto		Male		Female		Total	%*
	regr	off regr		%*		%*		
Barnes	89	73	218	8.0	88	3.7	306	6.0
Castle	108	95	291	10.2	123	5.3	414	8.0
Copt Hill	86	81	217	7.5	95	4.1	312	6.0
Doxford	82	72	162	5.7	86	3.5	248	4.7
Fulwell	60	54	131	4.6	62	2.5	193	3.6
Hendon	208	204	684	27.1	235	11.0	919	19.7
Hetton	84	74	231	8.6	92	4.5	323	6.8
Houghton	87	78	200	7.2	74	3.2	274	5.4
Milfield	102	102	304	10.9	121	5.1	425	8.2
Pallion	141	130	383	15.3	155	7.5	538	11.8
Redhill	138	136	340	12.5	150	6.7	490	9.9
Ryhope	83	90	220	8.7	111	4.9	331	6.9
St Anne's	98	110	292	11.7	131	6.0	423	9.0
St Chad's	59	79	180	8.3	62	3.1	242	5.8
St Michael's	110	93	262	9.3	112	4.8	374	7.3
St Peter's	89	86	234	8.0	81	3.4	315	5.9
Sandhill	140	122	328	13.2	153	7.6	481	10.7
Shiney Row	94	101	196	6.1	94	3.4	290	4.9
Silksworth	86	98	254	9.4	124	5.1	378	7.3
Southwick	110	109	355	14.8	132	6.8	487	11.2
Washington Central	87	75	220	7.0	89	3.3	309	5.3
Washington East	73	66	192	6.0	87	3.3	279	4.8
Washington North	146	133	342	11.0	172	6.8	514	9.2
Washington South	62	61	157	4.7	75	2.7	232	3.8
Washington West	87	96	190	6.0	85	3.2	275	4.7
SUNDERLAND	2,509	2,418	6,583	9.4	2,789	4.8	9,372	7.3
TYNE AND WEAR	9,168	8,729	24,943	9.1	10,103	4.4	35,046	7.0

Source: Office for National Statistics, Tyne & Wear Research and Information

Notes: * Rates are the number of unemployed as a percentage of the estimated labour force (the economically active population, Male 16-64, Female 16-59), at mid-2007 (TWRI ests. based on ONS population estimates).