

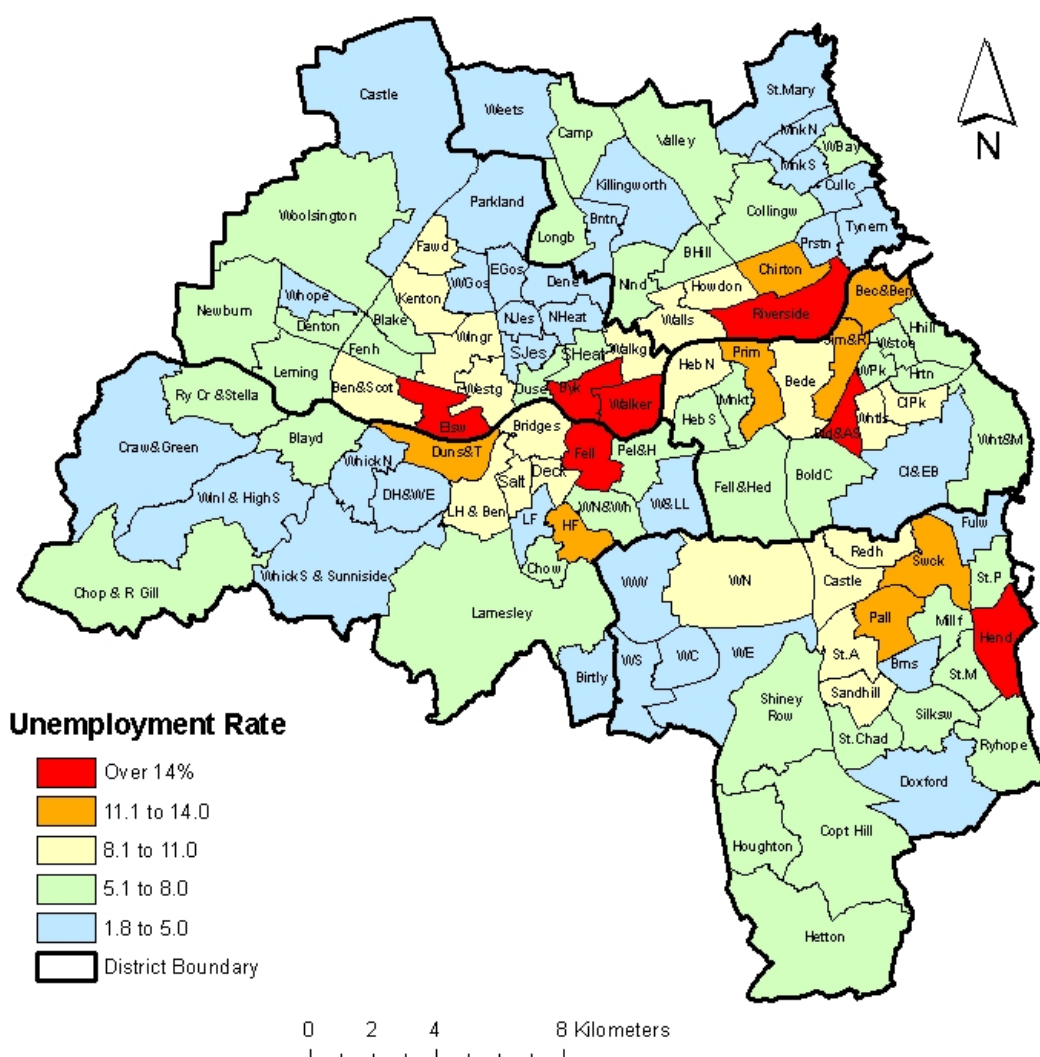
Maps of Unemployment in Tyne & Wear: March 2011



Published: April 2011
EU11/04b.

CLAIMANT COUNT UNEMPLOYMENT

Claimant Count Unemployment Rates, March 2011



Note: Rates are the number of unemployed as a percentage of the estimated labour force (the economically active population), at mid-2009 (TWRI ests. based on ONS population estimates).

Source: Office for National Statistics, Tyne & Wear Research and Information. Mapped by TWRI, © Crown Copyright, 2009, All rights reserved (Tyne & Wear Research and Information) (Licence No 10002987) (April 2011).

TYNE & WEAR

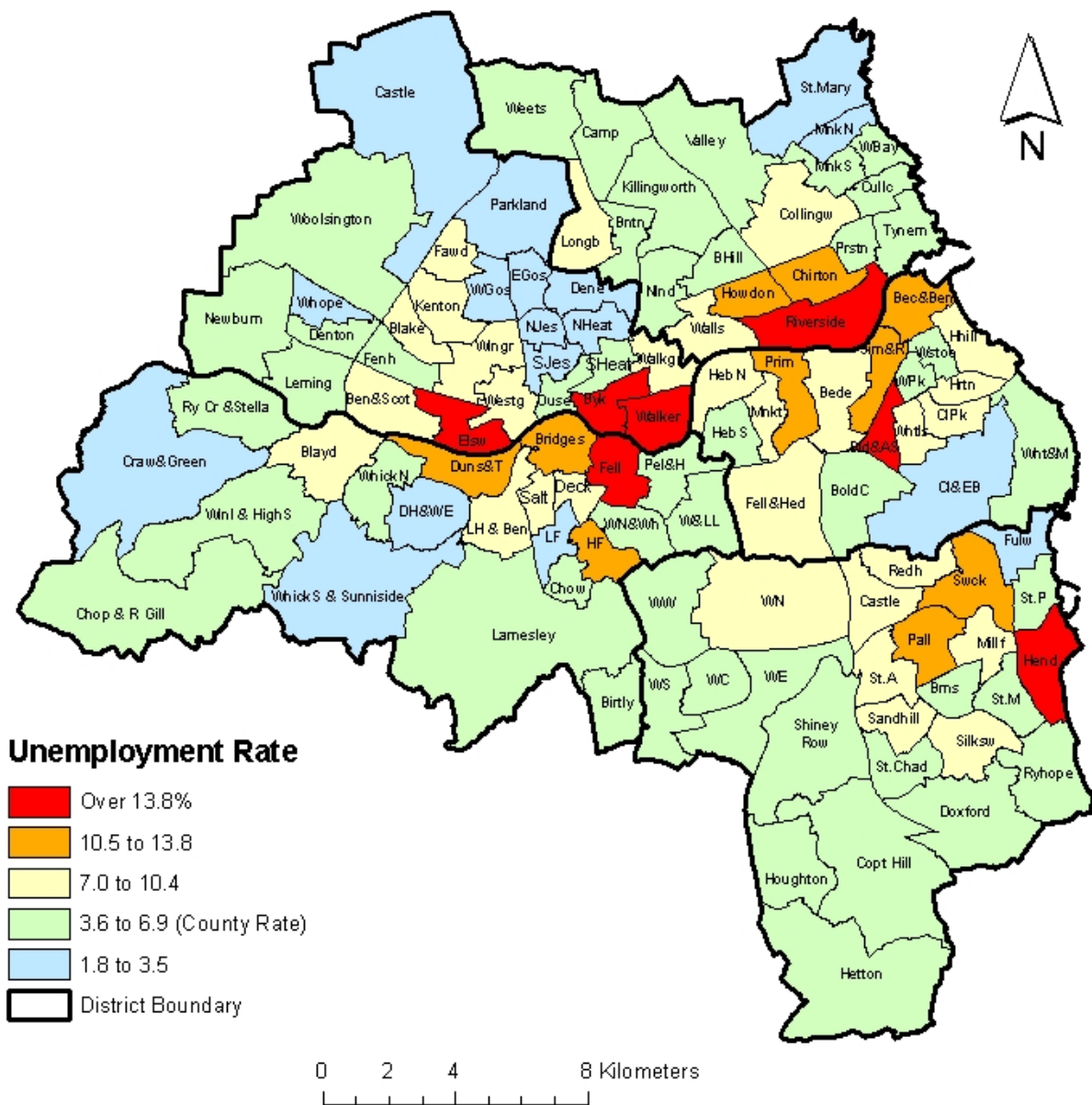


RESEARCH AND INFORMATION

TYNE & WEAR RESEARCH AND INFORMATION (TWRI)
Provincial House, Northumberland Street, Newcastle Upon Tyne. NE1 7DQ
Tel: (0191) 277 1912, Fax: (0191) 277 1911
E-MAIL: twri@twri.org.uk
WEBSITE: www.twri.org.uk

Supported jointly by Cities of Newcastle and Sunderland and the Metropolitan Boroughs of Gateshead, North Tyneside and South Tyneside

Claimant Count Unemployment Rates, March 2011 (Showing County Rate = 6.9%)



Note: Rates are the number of unemployed as a percentage of the estimated labour force (the economically active population), at mid-2009 (TWRI ests. based on ONS population estimates).

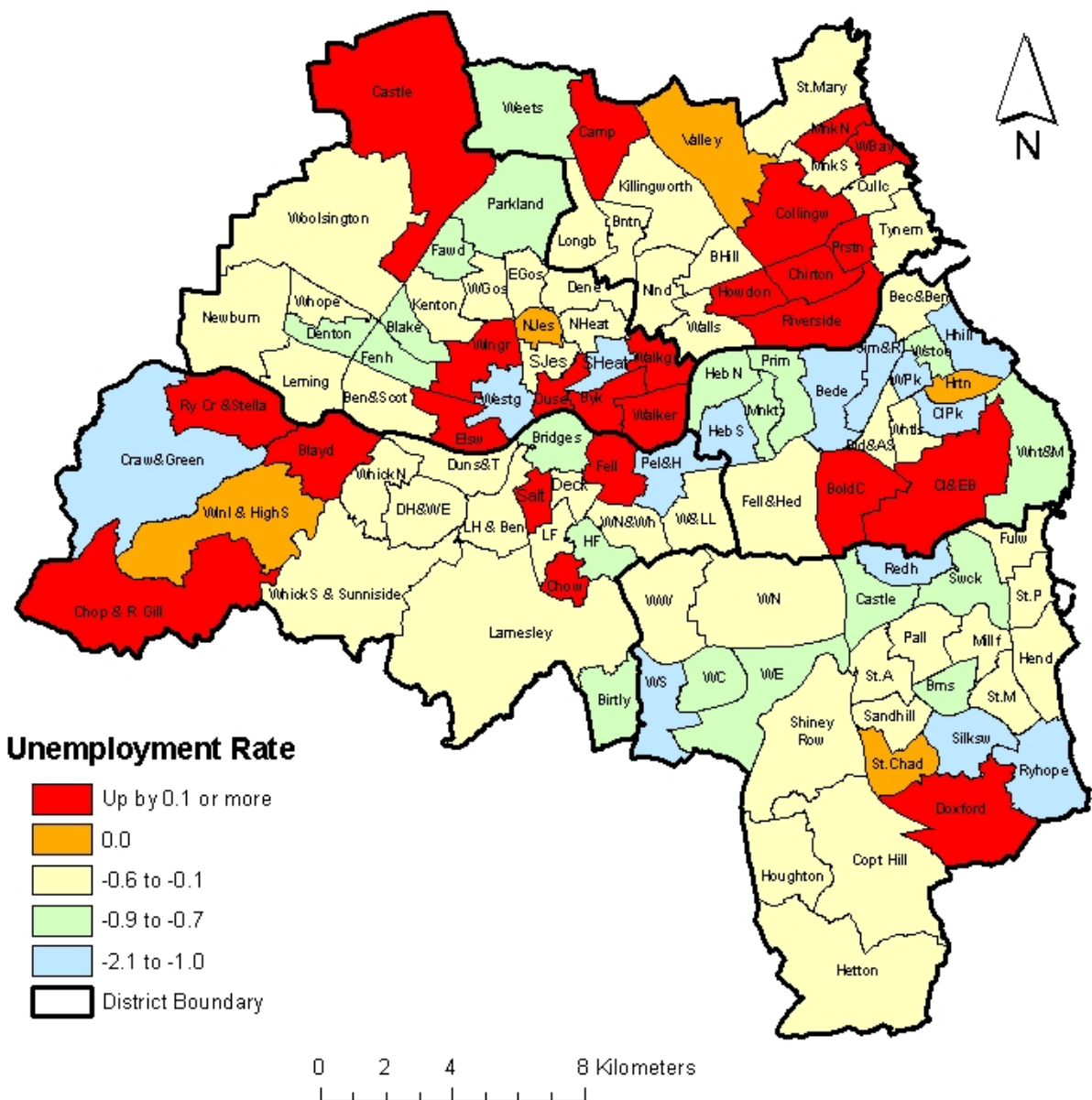
Source: Office for National Statistics, Tyne & Wear Research and Information. Mapped by TWRI, © Crown Copyright, 2009. All rights reserved (Tyne & Wear Research and Information) (Licence No 10002987) (April 2011).

TYNE & WEAR



RESEARCH AND INFORMATION

Change in Claimant Count Unemployment Rates, March 2010 to March 2011



Note: Rates are the number of unemployed as a percentage of the estimated labour force (the economically active population), at mid-2009 (TWRI ests. based on ONS population estimates).

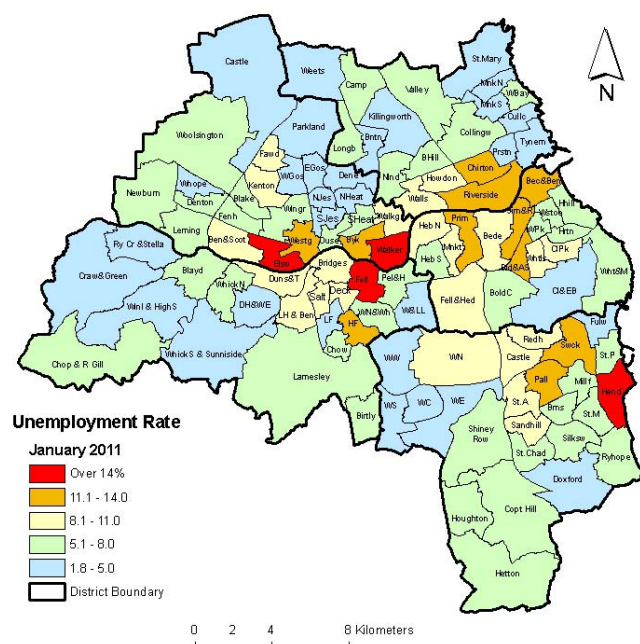
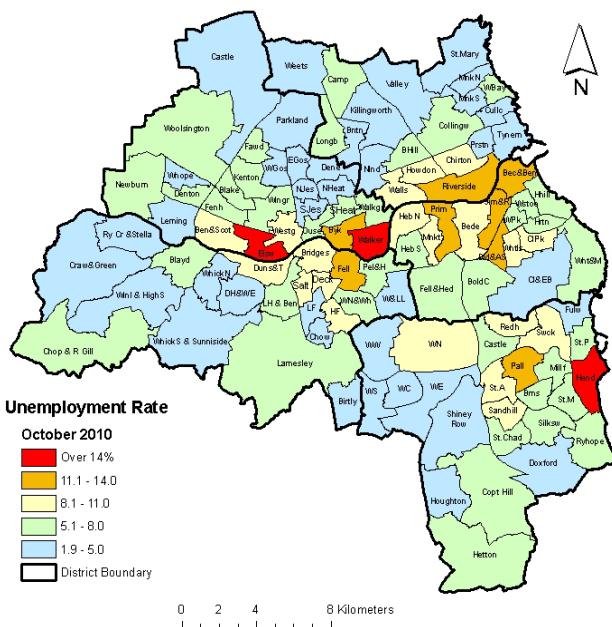
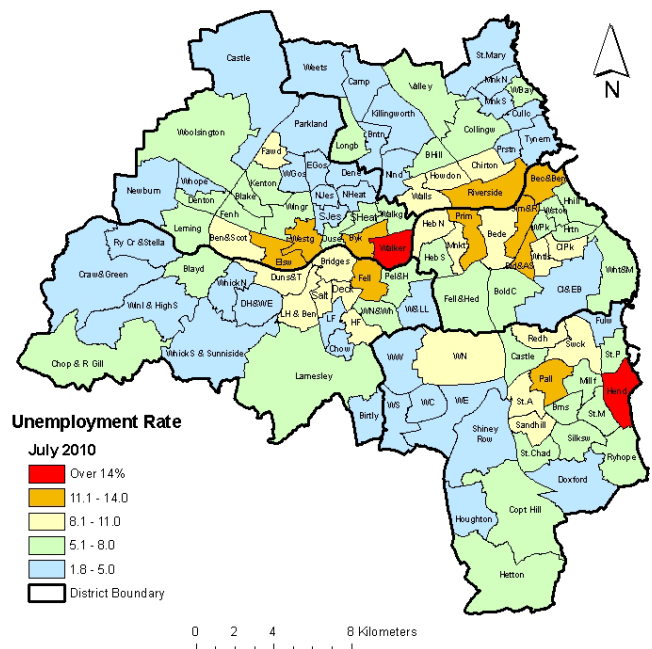
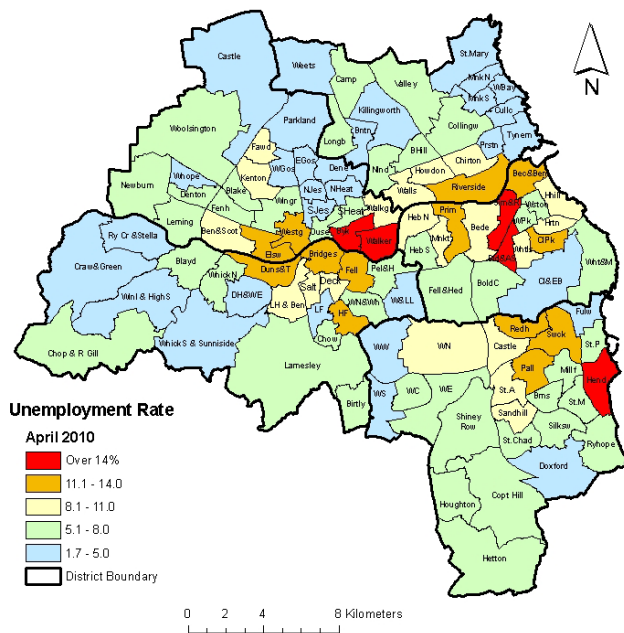
Source: Office for National Statistics, Tyne & Wear Research and Information. Mapped by TWRI, © Crown Copyright, 2009, All rights reserved (Tyne & Wear Research and Information) (Licence No 10002987) (April 2011).

TYNE & WEAR



RESEARCH AND INFORMATION

Claimant Count Unemployment Rates April 2010 to January 2011



Note: Rates are the number of unemployed as a percentage of the estimated labour force (the economically active population), at mid-2009 (TWRI ests. based on ONS population estimates).

Source: Office for National Statistics, Tyne & Wear Research and Information. Mapped by TWRI, © Crown Copyright, 2009, All rights reserved (Tyne & Wear Research and Information) (Licence No 10002987) (March 2011).