

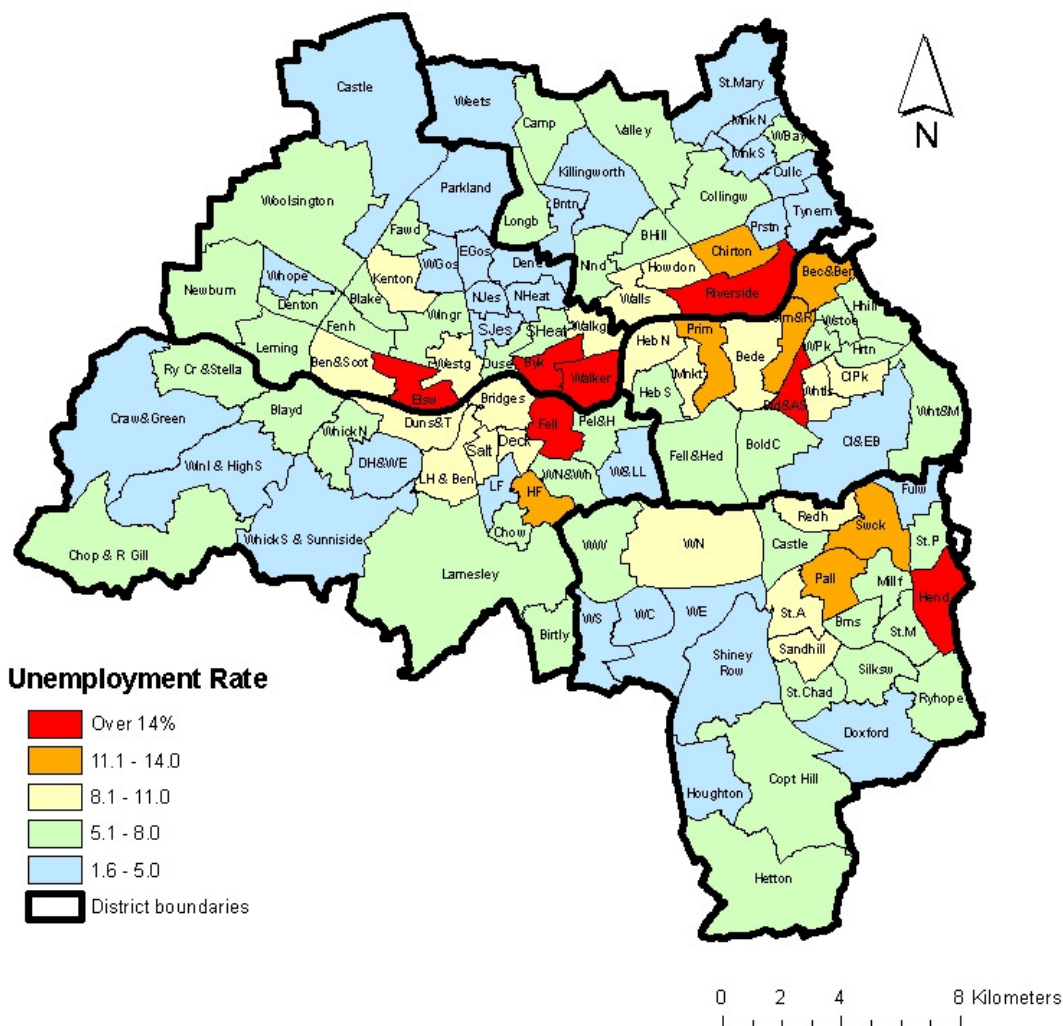
# Maps of Unemployment in Tyne & Wear: June 2011

Published: July 2011  
EU11/06b.



## CLAIMANT COUNT UNEMPLOYMENT

### Claimant Count Unemployment Rates, June 2011



Note: Rates are the number of unemployed as a percentage of the estimated labour force (the economically active population), at mid-2009 (TWRI ests. based on ONS population estimates).

Source: Office for National Statistics, Tyne and Wear Research and Information. Mapped by TWRI, © Crown Copyright, 2009. All rights reserved (Tyne and Wear Research and Information) (Licence No 10002987) (July 2011).

TYNE & WEAR

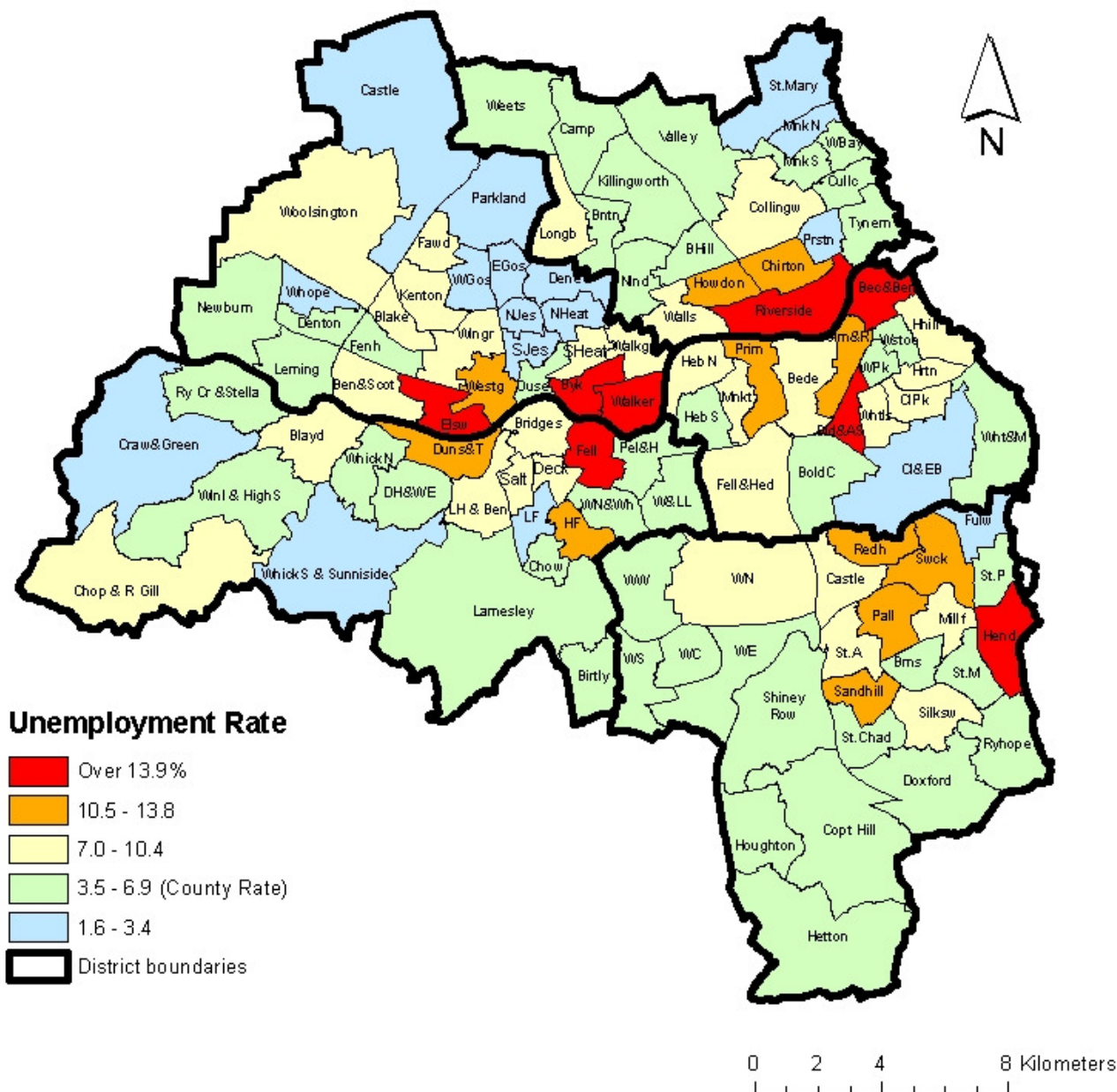


RESEARCH AND INFORMATION

TYNE AND WEAR RESEARCH AND INFORMATION (TWRI)  
Room 506, Civic Centre, Newcastle Upon Tyne. NE99 2BN  
Tel: (0191) 277 1912, Fax: (0191) 277 1911  
E-MAIL: [twri@twri.org.uk](mailto:twri@twri.org.uk)  
WEBSITE: [www.twri.org.uk](http://www.twri.org.uk)

Supported jointly by Cities of Newcastle and Sunderland and the Metropolitan Boroughs of Gateshead, North Tyneside and South Tyneside

## Claimant Count Unemployment Rates, June 2011 (Showing County Rate = 6.9%)



Note: Rates are the number of unemployed as a percentage of the estimated labour force (the economically active population), at mid-2009 (TWRI ests. based on ONS population estimates).

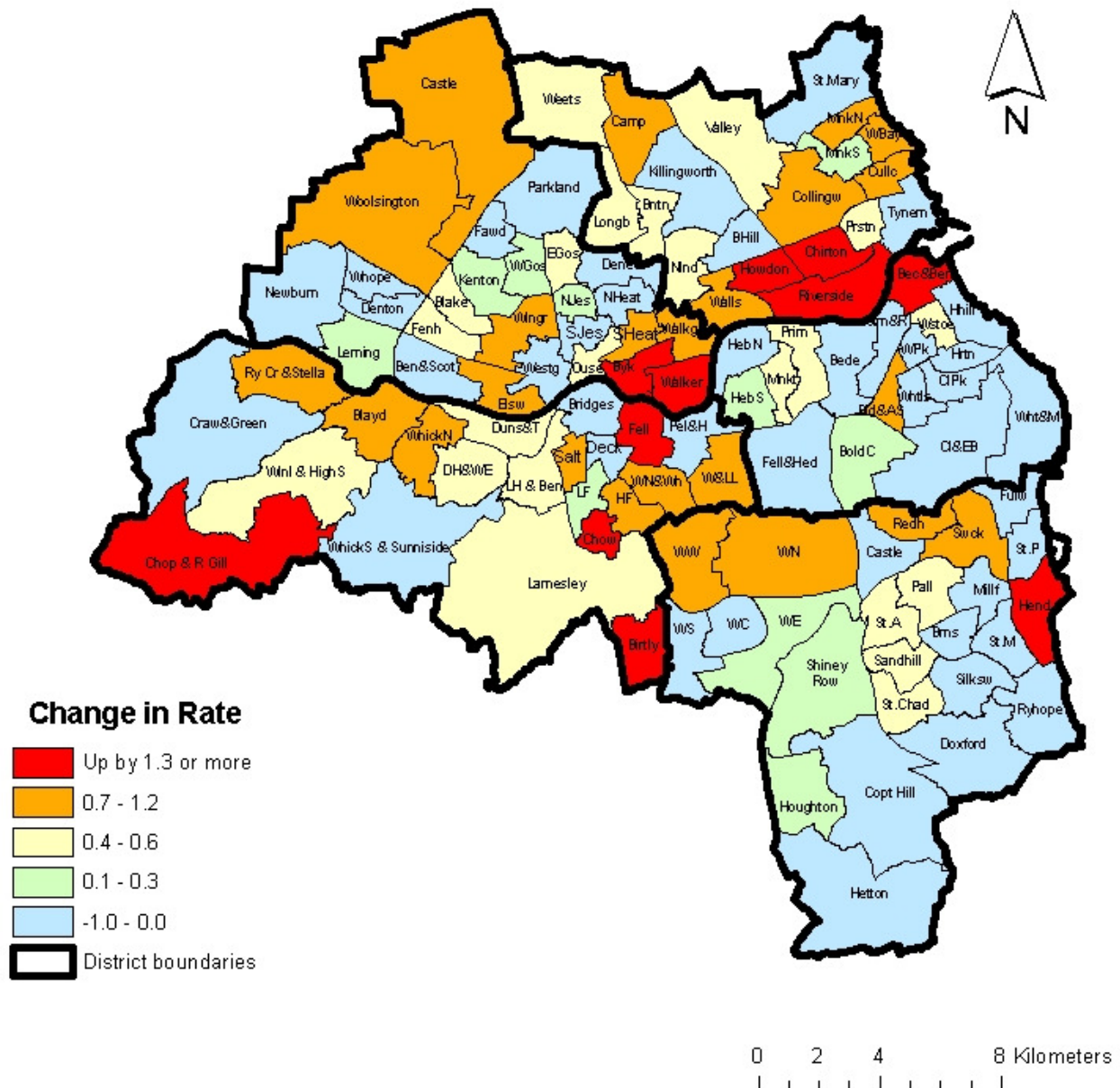
Source: Office for National Statistics, Tyne and Wear Research and Information. Mapped by TWRI, © Crown Copyright, 2009, All rights reserved (Tyne and Wear Research and Information) (Licence No 10002987) (July 2011).

TYNE & WEAR



RESEARCH AND INFORMATION

## Change in Claimant Count Unemployment Rates, June 2010 to June 2011

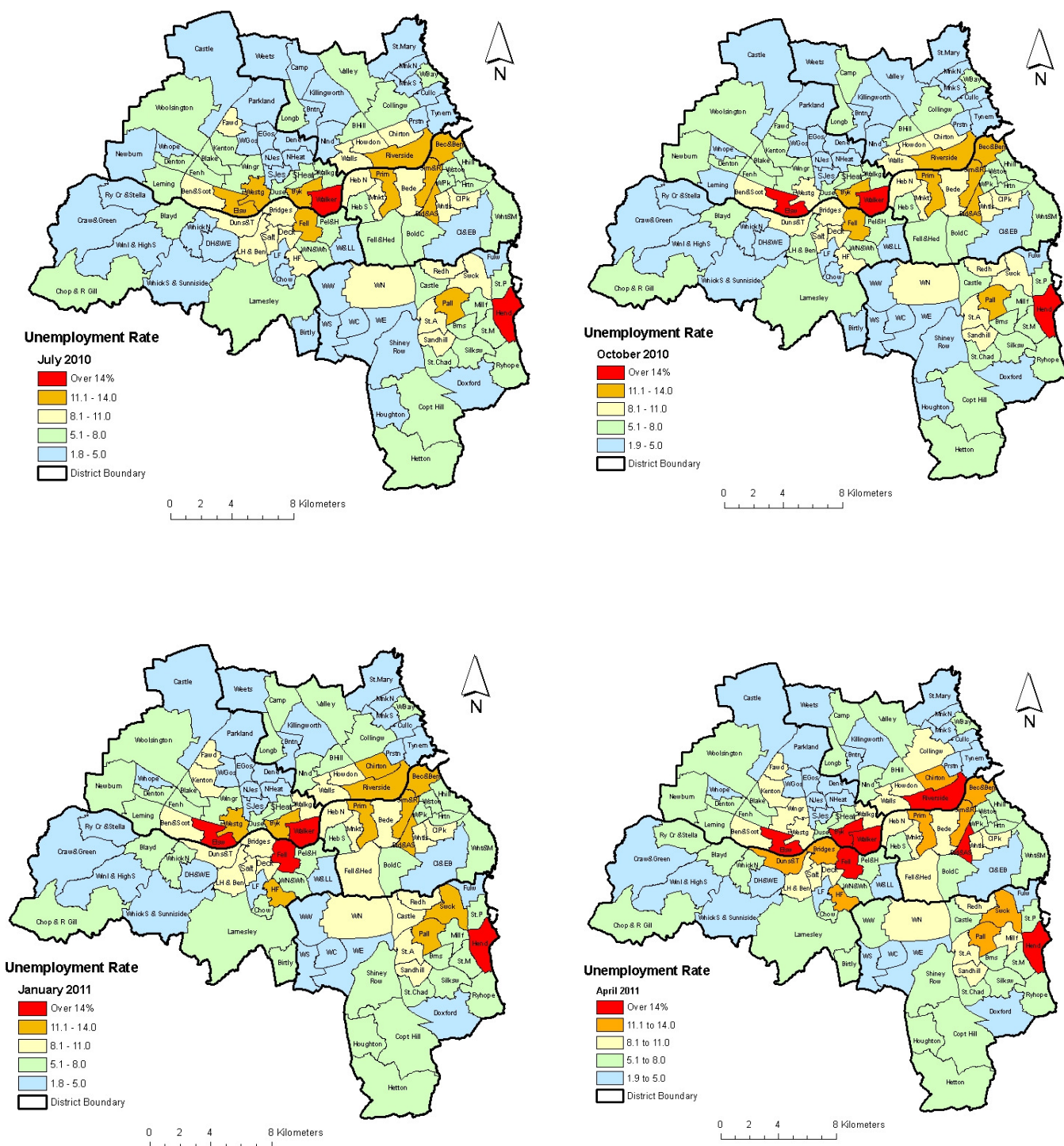


Note: Rates are the number of unemployed as a percentage of the estimated labour force (the economically active population), at mid-2009 (TWRI ests. based on ONS population estimates).

Source: Office for National Statistics, Tyne and Wear Research and Information. Mapped by TWRI, © Crown Copyright, 2009, All rights reserved (Tyne and Wear Research and Information) (Licence No 10002987) (July 2011).



# Claimant Count Unemployment Rates July 2010 to April 2011



Note: Rates are the number of unemployed as a percentage of the estimated labour force (the economically active population), at mid-2009 (TWRI ests. based on ONS population estimates).

Source: Office for National Statistics, Tyne and Wear Research and Information. Mapped by TWRI, © Crown Copyright, 2009, All rights reserved (Tyne and Wear Research and Information) (Licence No 10002987) (July 2011).