



State of the Tyne and Wear Labour Market Report Winter 2010

This edition covers developments
mainly in the period
October – December 2010

Ref:LMR 11/01

February 2011

CONTENTS

Summary and Key Points	1
§1 Employment	2
§2 Job Change Announcements	3
§3: Claimant Unemployment	5
§4 Unemployment Forecasts	9
§5 Vacancies	10
§6 Employment Change by Industry	11
§7 Tables of Local Job Gains and Losses	12

TWRI
1st Floor Provincial House
Northumberland Street
Newcastle upon Tyne
NE1 7DQ
Tel: (0191) 277 1912
Fax: (0191) 277 1911
E-MAIL: twri@twri.org.uk
WEBSITE: www.twri.org.uk

SUMMARY and KEY POINTS

This report covers the 3 months to December.

Labour Market Overview

The local economy reflected the national “two-speed” recovery. In Q4, on balance, manufacturing reported workforce growth while services reported contraction¹. Since May, the monthly claimant unemployment count has remained between 6 and 9% lower than the equivalent 2009 count. Notified vacancies are up compared to a year ago. Nationally, about three-quarters of the net job gains are part-time.

- 1 In Q4, on balance, TW firms reported continued decline in private services’ workforce (the much bigger of the two sectors). Manufacturing firms reported strong workforce growth² (§1).
- 2 Job Change announcements by firms in TW were negative (losses exceeded gains by just over 1,000 in Q4) (§2 and 7). [Caution: this source omits many job losses and timings of the gains coming into effect are variable. See §2 for more details.]
- 3 Claimant unemployment in TW was down by about 570 (-1.6%) from September (§3).
 - Compared to a year ago, claimant unemployment in December was lower in all TW Districts (-3,097). The largest fall was in Sunderland (down by over 1,000). At ward level, however, rates were higher in 11 of TW’s 111 wards. Seven of the ward rises occurred in North Tyneside, three in Newcastle and one (Whickham North) in Gateshead.
 - Notified vacancies³ in the 3 months to December were up by almost a third from a year before (§5). They were down 10% from 2 years ago.

Compared to a year ago vacancies are up in all TW Districts with North Tyneside showing the largest rise (+970, +141%).

Unemployment

In the UK, in December, the seasonally adjusted claimant count fell by 4,100 (-0.3%), to 1.46m. This is 144,000 lower (-9.0%) than a year ago.

Official UK unemployment (using the LFS definition) is estimated to have risen in the 3 months to November, compared with the previous 3 months, by 49,000 to 2.5m. Of particular concern was the rise in unemployment amongst young people (16-24); up 32,000 on the quarter to reach 951,000, the highest recorded figure.

Note: the forecasters do not expect unemployment to rise rapidly in 2011 (§4). The average of independent forecasts for the UK claimant count (of unemployment) is consistent with a further rise in Tyne and Wear of about 2,000 in 2011 – which would take the count back to about 37,000; still lower than the January 2010 total.

Local Job Gains

The main gain in Q4 was at OGN (+1,000), an oil and gas engineering contactor in North Tyneside. There were also gains in retail; Tesco (+759) in Sunderland, subject to planning permission, and Morrisons (+250) in South Tyneside.

Local Job Losses

The main losses were at Newcastle City Council (-2,000 by 2014) and South Tyneside Council (-1,200 by 2014). In the private sector the biggest loss was at Robson Brown (-93), as the advertising and media company went into administration

Date: 8th February 2011

¹ At least according to the NE Chamber of Commerce survey (NE Business Barometer, NEBB) TW results.

² NE Business Barometer (TW results only used here).

³ to JobCentre Plus

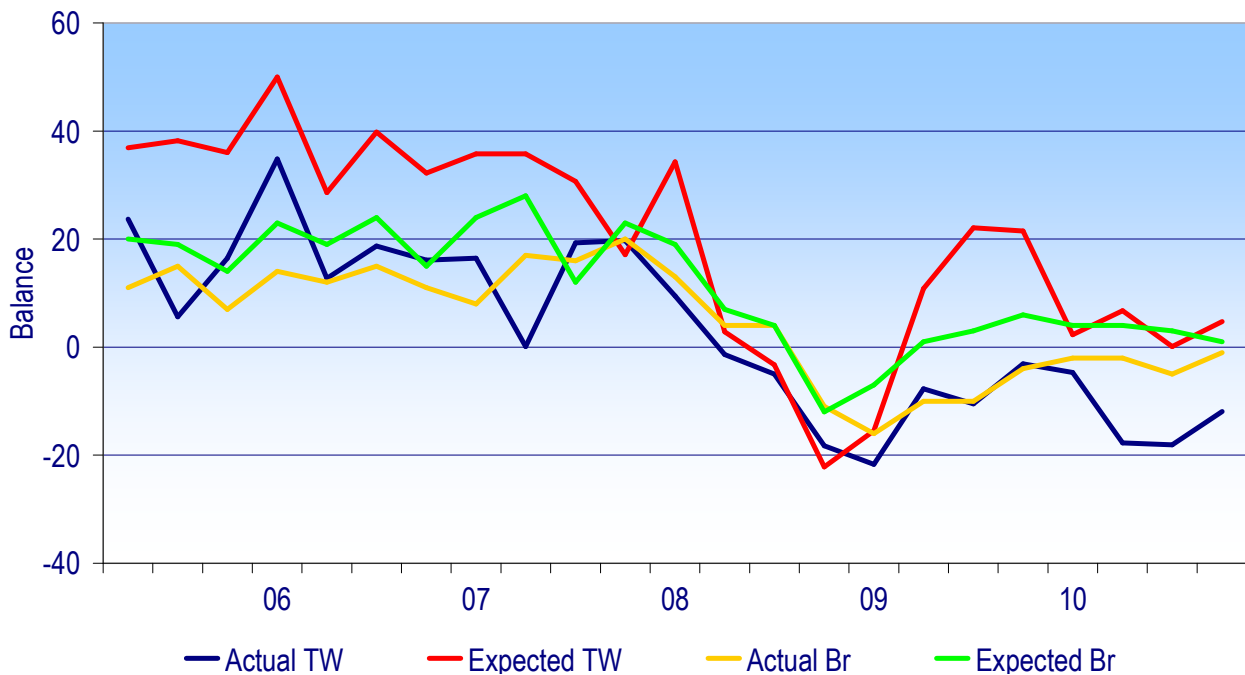
§1: Employment

In Q4 2010, as in Q2 and Q3, Tyne and Wear’s service firms reported a marked fall in employment (balance -12pp). TW service firms have reported more weakness than British service firms for four successive quarters, with marked differences (of over 10 points) in each of the last three quarters.

On balance, ‘actual employment’ for Service firms in Tyne and Wear has been negative (i.e. its level has been falling) for the last eleven quarters (since summer 2008); for Britain the employment balance has been negative for the last nine quarters.

On balance, service firms in TW are expecting employment growth in the next quarter. Historically, however, TW service firms have usually been over-optimistic by around 15-20pp.⁴

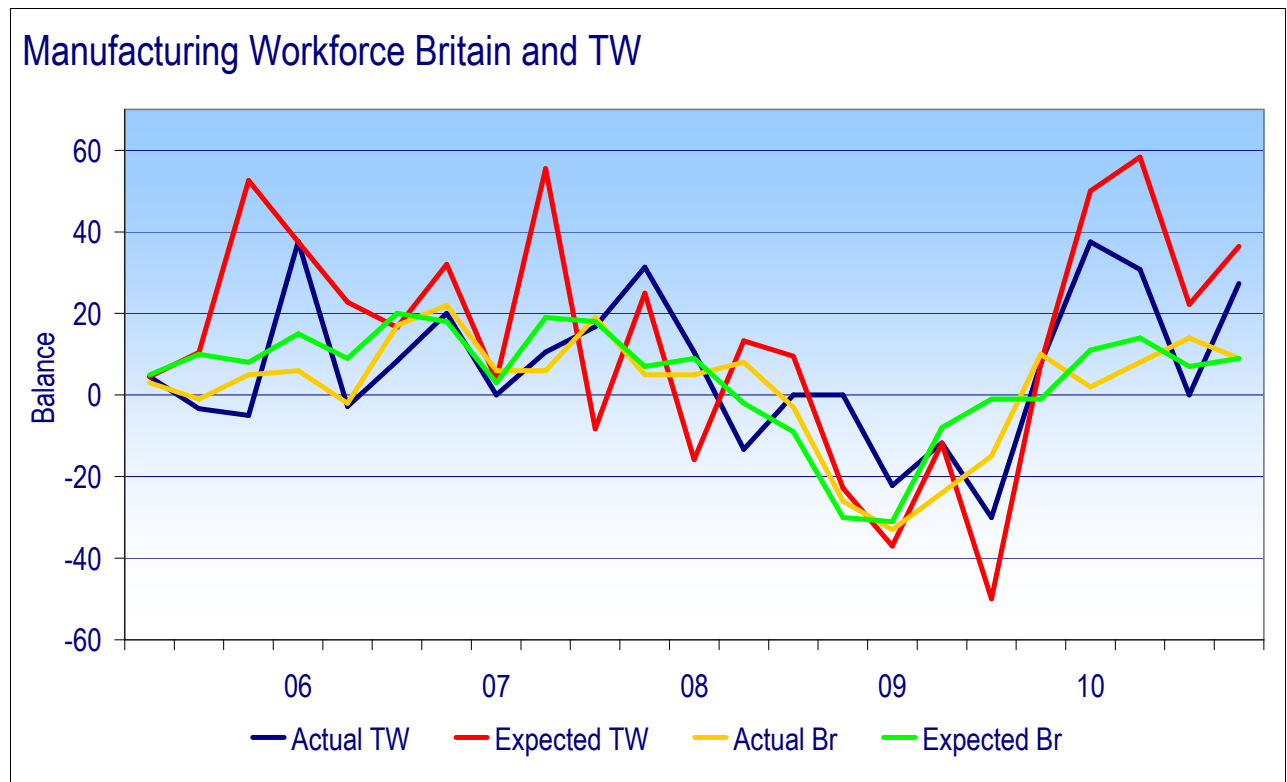
Service Workforce Britain and TW



Source: Business Survey NE (TW data) – from Economic Research Services; national data from British Chamber of Commerce. Caution: these measures weight all firms equally, and make no allowance for the different scale of job changes in different firms and industries. The two surveys cover firms. They do not cover the public sector part of services. The public sector accounts for about two-fifths of service sector jobs in TW.

⁴ British service firms have been markedly less over-optimistic in their expectations (by around 5-10pp versus actual).

In Q4, Tyne and Wear manufacturing firms reported strong employment change (on balance +27, blue line). For Britain, reported manufacturing employment growth was much milder (on balance +9, yellow line).

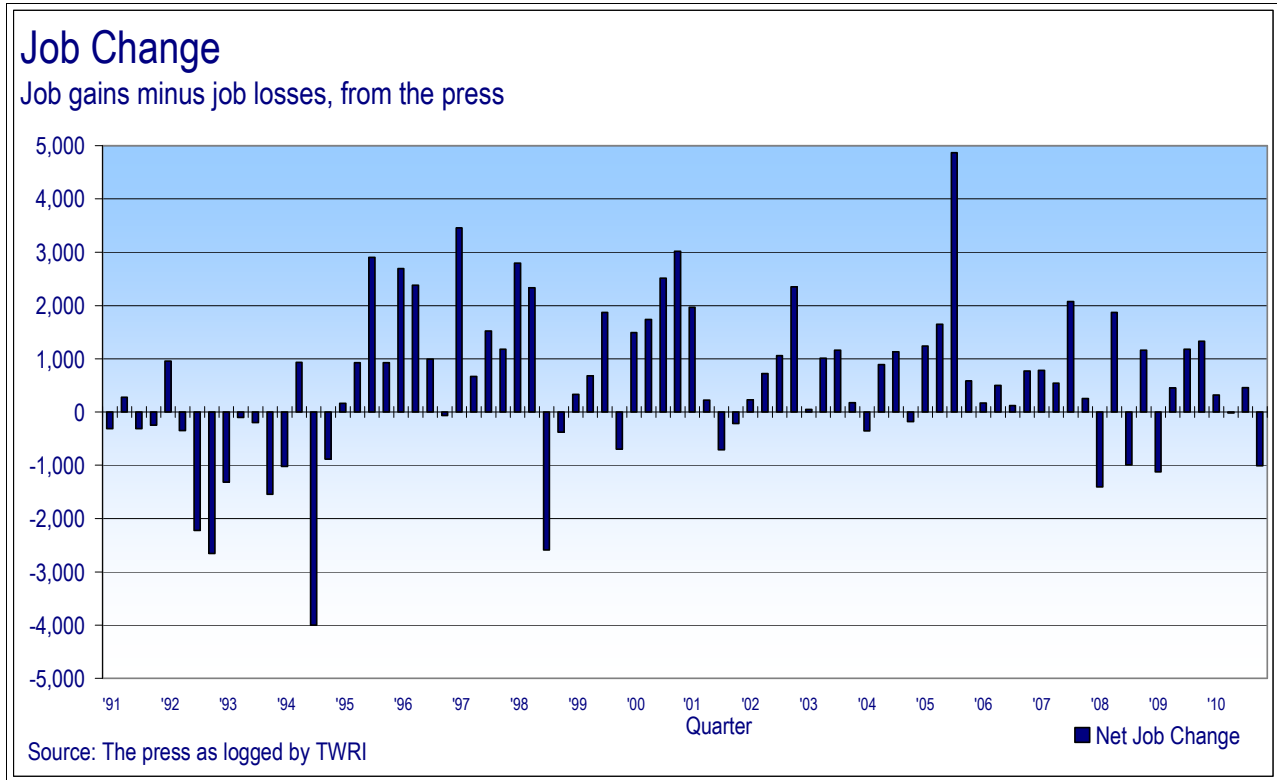


Caution: the employment expectations of manufacturing firms (for the next 3 months) are usually poor indications of the actual outcome. In 2010 Q2, this was extreme; the record optimistic manufacturing employment prospects (almost +60 points) among TW's firms (red line) was followed by zero employment growth. Manufacturing firms in TW have returned (in 2010 Q3) to a position akin to that before the recession, but with slightly slower reported employment growth. Caution: TW manufacturing returns are particularly low in number.

§2: Job Change Announcements

Job Changes in the Q4⁵ period (as reported in the press) were, on a net basis, negative (-1,007). This follows Q3 which was positive (+460). The last large net loss, of over a 1,000, was in Q1 2009. In the latest quarter, the press reports suggested the large net losses were in Newcastle and South Tyneside. Note: these data do not report all job gains and losses.

⁵ October-December



A full itemised list of reported job gains and losses is given at the end of this report (in size order).

Standard Note on interpretation of press reports of Job Change (JC), aggregated by TWRI:

This source gives good coverage of market services and manufacturing – together about half the economy. It therefore has important gaps ('omissions'), the three main ones being;

- public service employment growth was never reported in any significant way (1997-2007),
- job losses from small retailers are never captured effectively and
- construction (as with other sources) cannot be recorded at all.

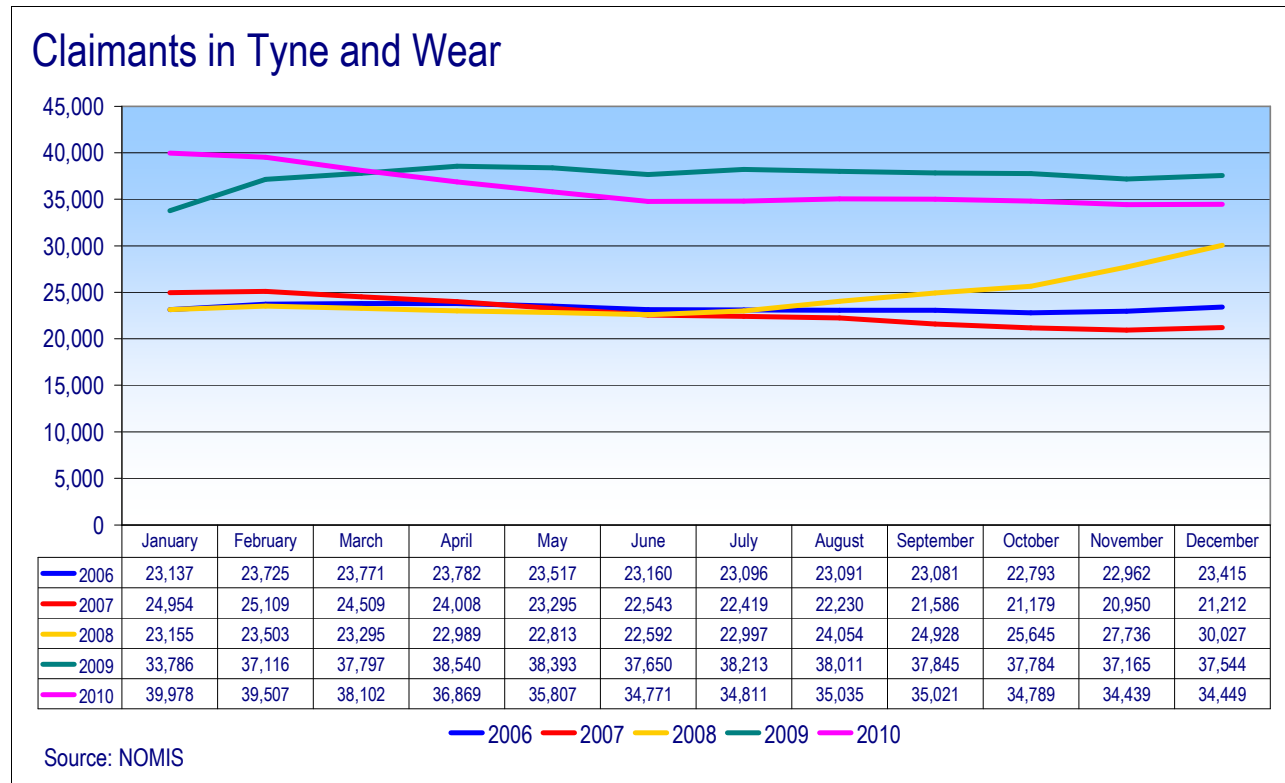
A fourth gap was created through temporary jobs being reported but their demise not being.

TWRI analysis of the long-term series (14 years) has found the JC series typically omitted about 2,000pa job losses (but this is variable). This might be partly explained by the time lags from announced gains to their fruition.

§3: Claimant Unemployment

In Tyne and Wear, claimant unemployment fell over the last quarter of 2010, down 572 from September to December. The recent peak (39,978) occurred in January 2010. Claimant unemployment was 8.2% lower in December 2010 compared to December 2009, a fall of almost 3,100.

The chart (below) shows comparison with previous 'normal' years such as 2006 and 2007 and highlights the atypical behaviour towards the end of 2008 and the beginning of 2009.



In the ten months from July 2008 to April 2009 claimant unemployment rose by almost 16,000 in Tyne and Wear, with the majority of the increase occurring between November 2008 and February 2009. This is reflected in the annual average unemployment figures. By 2009 the annual average was 37,487, almost two-thirds higher than in 2007.

In December 2010, there were over 3,000 fewer claimants in Tyne and Wear than a year earlier (-8.2%). Claimant unemployment in Tyne and Wear has been on a downward trend since April 2009⁶.

Compared to December 2008, Tyne and Wear's claimant unemployment in December 2010 was 15% higher. The increase at county level reflects the sustained rise in claimant unemployment that began in July 2008 and continued until April 2009.

⁶With seasonal rises in December and January.

	Claimant* Unemployment, December 2010		Change since December 2008		Change since December 2009	
	Total	Rate%	Number	%	Number	%
Gateshead	5,508	6.4 R	705	14.7	-565	-9.3
Newcastle	8,172	6.7 R	998	13.9	-577	-6.6
North Tyneside	5,724	6.0 R	979	20.6	-170	-2.9
South Tyneside	5,841	8.5 R	502	9.4	-749	-11.4
Sunderland	9,221	7.2 R	1,240	15.5	-1,036	-10.1
Tyne and Wear	34,466	6.9 R	4,424	14.7	-3,097	-8.2
Co. Durham	12,658	-	1,109	9.6	-1,604	-11.2
Durham4**	8,004	-	1,114	16.2	-667	-7.7
Northumberland	7,212	-	773	12.0	-400	-5.3
Northumberland4 #	6,096	-	599	10.9	-385	-5.9
Tyne and Wear City Region	48,549	-	6,135	14.5	-4,147	-7.9
North East	79,409	6.5 W	11,830	17.5	-6,216	-7.3
Great Britain	1,368,310	4.3 W	250,798	22.4	-145,611	-9.6
United Kingdom	1,425,192	4.4 W	271,864	23.6	-141,813	-9.0

**Chester-le-Street, Derwentside, Durham City and Easington.
Blyth Valley, Castle Morpeth, Tynedale and Wansbeck.
- rates not available.
* Claimants of Jobseekers' Allowance

R = Residence-based. District and county claimant count rates are the number of unemployed now as a percentage of the estimated labour force (the economically active population), mid-2007 (TWRI ests based on ONS population ests.). These are new denominators from May 2009 data.

W = Workforce-based. National and regional claimant count rates are the number of unemployed as a percentage of the estimated total workforce (the sum of unemployed claimants, employees in employment, self-employed, HM Forces and participants on work-related government training programmes), at mid-2008.

Caution:

District and Tyne & Wear numbers are calculated using current (2004) wards. These numbers may vary slightly from figures extracted direct from NOMISWEB, which are based on 1991 wards and are no longer in complete alignment with current Tyne & Wear boundaries

Source: Office for National Statistics, Tyne and Wear Research and Information

In December 2010 the TW claimant unemployment rate⁷ (6.9%) remained 0.6 percentage points lower than 12 months earlier. This is the same gap as from September 2010's rate (7.0%) to a year earlier. The December 2010 rate is up by 1.9pp from two years earlier, due mainly to the rapid rise in early 2009.

In the year to December, unemployment rates rose in 11 of Tyne and Wear's 111 wards. Seven of the ward rises occurred in North Tyneside, three in Newcastle and one (Whickham North) in Gateshead. (See map)

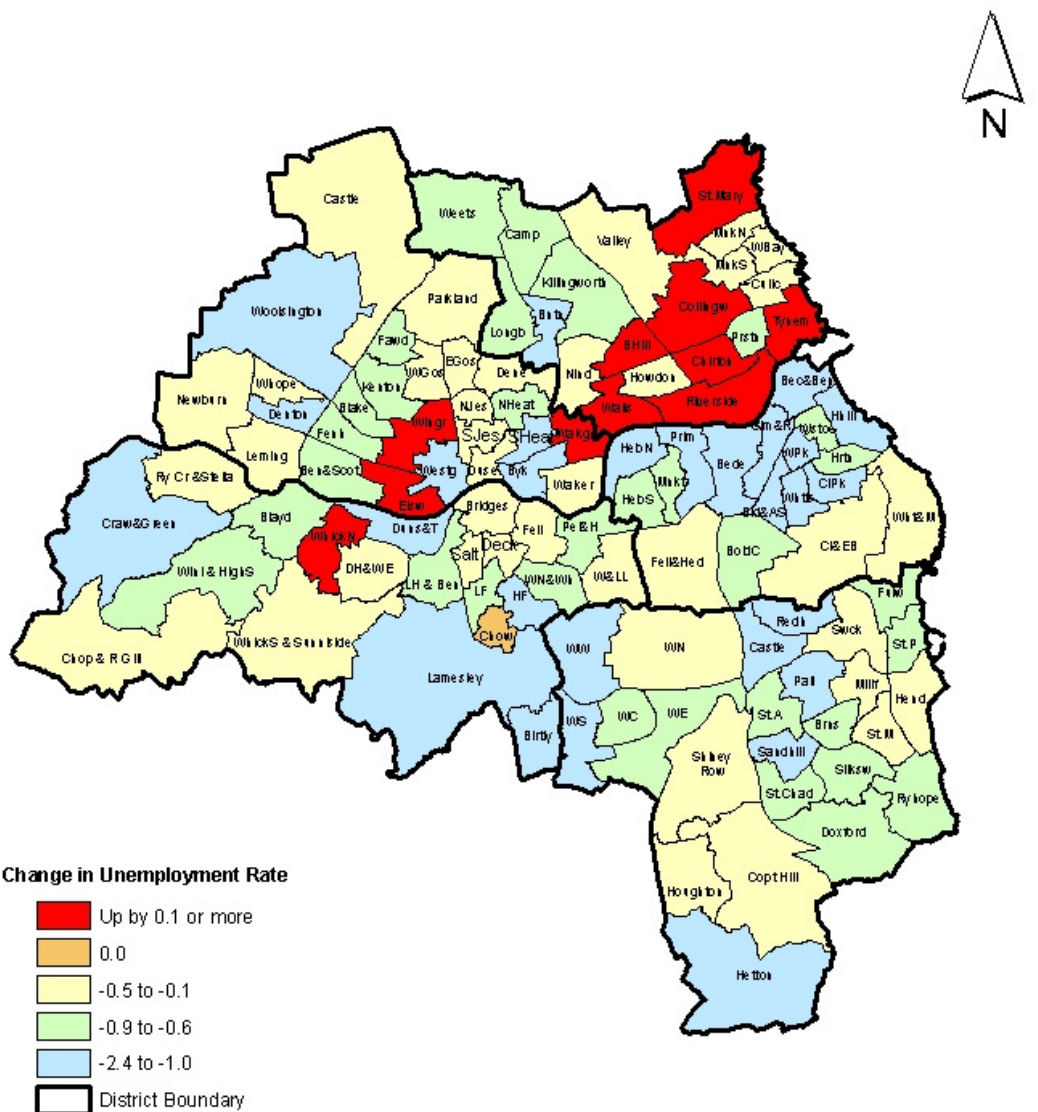
In the Tyne and Wear City Region, claimant unemployment in December 2010 was 7.9% lower than in December 2009. Compared to December 2008, unemployment in the TWCR was 14% higher in December 2010.

Claimant unemployment in the North East was 7.3% lower in December 2010 than a year earlier. In December 2010 the North East rate (6.5%) was 2.1 percentage points higher than the UK rate (4.4%).⁸

⁷ TWRI (not ONS) estimated claimant unemployment rates.

⁸ The estimated workforce in the area is used as the denominator for national and regional unemployment rates.

Change in Claimant Count Unemployment Rates, December 2009 to December 2010



Note: Rates are the number of unemployed as a percentage of the estimated labour force (the economically active population), at mid-2007 (TWRI ests. based on ONS population estimates).

Source: Office for National Statistics, Tyne & Wear Research and Information. Mapped by TWRI, © Crown Copyright, 2009, All rights reserved (Tyne & Wear Research and Information) (Licence No 10002987) (Jan. 2011).

0 2 4 8 Kilometers



Youth and Long-term Unemployment

Youth unemployment (18-24s) makes up a larger proportion of the total in Tyne and Wear than nationally. In December 2010, compared to December 2009, youth unemployment in Tyne and Wear was 8.4% lower, while the national fall was almost five points larger. Within Tyne and Wear, at District level, there was a very small rise in North Tyneside. However, North Tyneside is the only Tyne and Wear District whose proportion of unemployed who are youths is below the UK average.

	<u>December 2009</u>		<u>December 2010</u>		Change 2009 to 2010	% Change
	Number	% of total	Number	% of total		
Gateshead	1,675	28.1	1,525	28.1	-150	-9.0
Newcastle	2,550	29.6	2,270	28.1	-280	-11.0
North Tyneside	1,575	27.1	1,580	27.9	5	0.3
South Tyneside	1,960	29.8	1,750	30.1	-210	-10.7
Sunderland	3,225	31.6	2,945	32.2	-280	-8.7
Tyne and Wear	10,990	29.6	10,065	29.5	-925	-8.4
Durham County	4,475	31.5	4,395	35.0	-80	-1.8
Durham4	2,790	32.3	2,815	35.5	25	0.9
Northumberland County	2,330	31.3	2,220	31.2	-110	-4.7
Northumberland4	1,965	30.9	1,905	31.7	-60	-3.1
Tyne and Wear City Region	15,740	30.2	14,785	30.8	-955	-6.1
North East	26,370	31.1	24,215	30.8	-2,155	-8.2
Great Britain	443,015	29.4	381,125	27.9	-61,890	-14.0
United Kingdom	459,565	29.5	398,390	28.1	-61,175	-13.3

Note: Youth defined as aged 18 to 24.
Data rounded to nearest 5.
Durham4 = Chester-le-Street, Derwentside, Durham City and Easington
Northumberland4 = Blyth Valley, Castle Morpeth, Tynedale and Wansbeck

In Tyne and Wear, the number of long-term unemployed was lower in December 2010 compared to a year earlier. However, the proportion of claimants who were long-term unemployed rose to 13.3%.

North Tyneside was the only Tyne and Wear District where long-term unemployment was higher in December 2010 than a year earlier. This reflected the national change, although the percentage rise in North Tyneside was much larger. In North Tyneside 16.2% of claimants were long-term unemployed, similar to the UK proportion (16.6%). Despite falling numbers, the proportion of long-term claimants rose in Gateshead and South Tyneside.

Long-term Unemployment, December 2009 and December 2010

	December 2009		December 2010		Change	% Change
	Number	% of total	Number	% of total		
Gateshead	760	12.7	750	13.8	-10	-1.3
Newcastle	1,050	12.2	920	11.4	-130	-12.4
North Tyneside	695	12.0	915	16.2	220	31.7
South Tyneside	945	14.4	865	14.9	-80	-8.5
Sunderland	1,330	13.0	1,070	11.7	-260	-19.5
Tyne and Wear	4,785	12.9	4,525	13.3	-260	-5.4
Durham County	1,710	12.0	1,475	11.8	-235	-13.7
Durham4	1,020	11.8	905	11.4	-115	-11.3
Northumberland County	855	11.5	760	10.7	-95	-11.1
Northumberland4	775	12.2	685	11.4	-90	-11.6
Tyne and Wear City Region	6,575	12.6	6,115	12.7	-460	-7.0
North East	11,990	14.1	10,985	14.0	-1,005	-8.4
Great Britain	205,520	13.6	221,340	16.2	15,820	7.7
United Kingdom	215,380	13.8	235,750	16.6	20,370	9.5

Note: Long-term defined as claiming for over 12 months.

Data rounded to nearest 5.

Durham4 = Chester-le-Street, Derwentside, Durham City and Easington

Northumberland4 = Blyth Valley, Castle Morpeth, Tynedale and Wansbeck

Source: ONS, Crown Copyright Reserved (NOMIS), TWRI.

§4: Unemployment Forecasts

Forecasts of Unemployment in the UK

The consensus of UK economic forecasts is consistent with a small rise in unemployment in Tyne and Wear of about 2,000 over the year to the last quarter of 2011. Future UK economic prospects are for growth to continue in 2011 at a slightly higher rate than 2010. UK unemployment is forecast to rise by under 100,000 in 2011 (table, below). Note: the forecasters do *not* expect unemployment to rise substantially.

	2010	2011	Comments
Economic Growth	1.7%	2.0%	On average, economic growth forecasts have strengthened since September, by about 0.2pp for 2010 but only 0.1pp for 2011.
Claimant Unemployment	1.48m (Q4)	1.55m (Q4)	Average forecast was 30,000 up on 2010 ⁹ , then up by about 70,000 in 2011.

Source: average latest revised UK forecasts, from HM Treasury's survey of independent forecasts (published by the Treasury in January 2011).

Note: The main downside risks are weaker consumer spending, weak investment or an economic shock from the Eurozone.

TW may fare somewhat better than the UK in 2011, as the NE has a relatively large export-sector. Provisional data for Q3 2010 show a very small fall in the value of North East exports on the quarter. However, NE exports were up 26% on Q3 2009.

⁹ TWRI calculation on the assumption that forecasters use UK seasonally adjusted unemployment. This was about 1.457m in December 2010.

§5: Vacancies

Summary of Notified Vacancies, by TW District

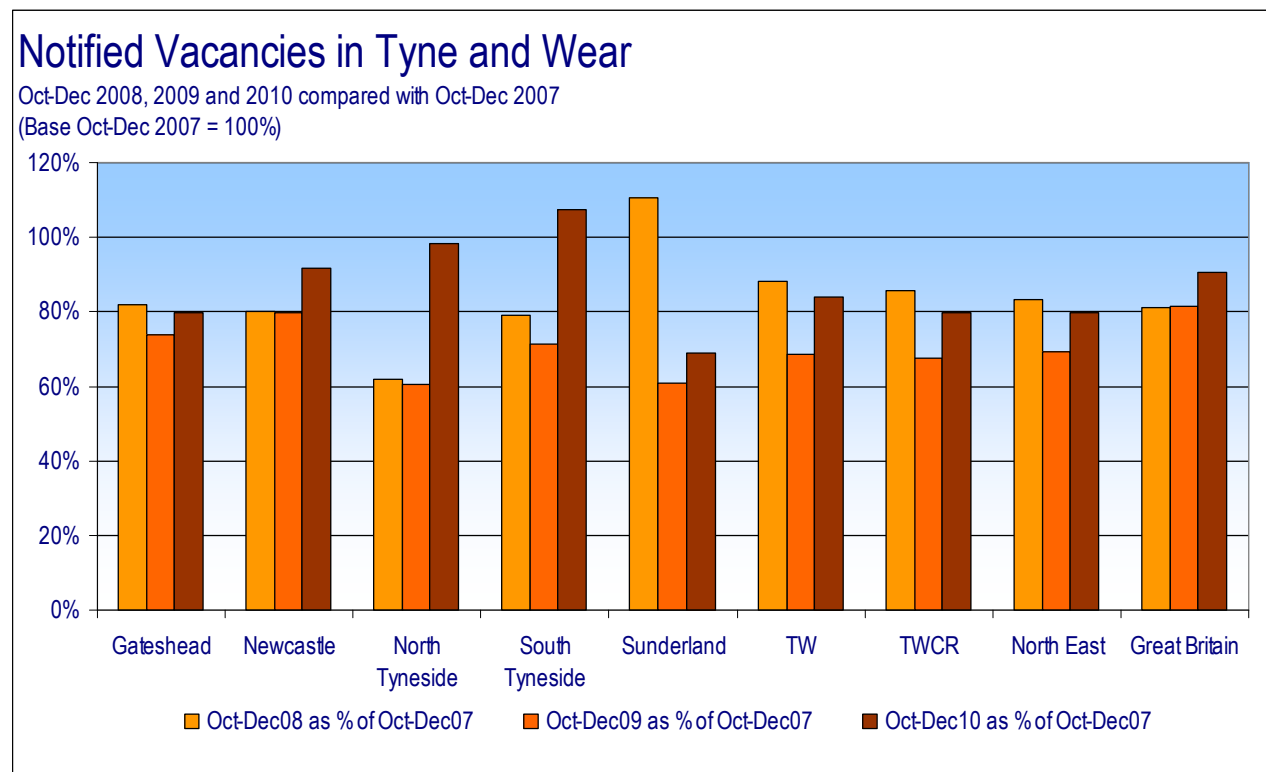
Caution: Notified Vacancies do not have sufficient quality to be National Statistics. The data should be treated as indicative only.

In Sunderland and Gateshead notified vacancies in December were lower than two years ago. In Sunderland they were down by just over a half, in Gateshead by 12%. Compared to a year ago vacancies are up in all TW Districts with North Tyneside showing the largest rise (+970, +141%). Overall, vacancies in TW are down 10% from two years ago, and up by almost a third from a year ago.

	2008			2009			2010		
	Oct	Nov	Dec	Oct	Nov	Dec	Oct	Nov	Dec
Gateshead	2,092	1,767	911	1,923	1,648	735	2,556	1,308	800
Newcastle	2,248	2,682	1,606	2,257	2,561	1,688	3,271	2,378	1,832
North Tyneside	1,034	1,253	614	860	1,291	689	1,796	1,164	1,659
South Tyneside	771	857	503	685	803	434	1,244	1,096	552
Sunderland	4,170	4,801	3,756	2,743	2,719	1,537	3,811	2,302	1,842
Tyne and Wear	10,315	11,360	7,390	8,468	9,022	5,083	12,678	8,248	6,685

Source: ONS Crown Copyright Reserved [Nomis].

Notified vacancies have recovered to 91% of pre-recession¹⁰ levels in Great Britain, and about 84% in TW (Oct-Dec data are the latest). Across TW, notified vacancies in South Tyneside were higher than in 2007 and in North Tyneside they are very close to the 2007 level (graph, below).



¹⁰ 2007.

§6: Employment Change by Industry

In the year to Q3 2010, workforce jobs¹¹ in the North East fell overall by 3% (-32,000); North East jobs in:

- Production rose very strongly (+16%). This contrasts with a 3% fall in the UK. Growth was led by manufacturing (presumably taking back employees who were laid off in the depths of the recession).
- Construction fell by 6% to 2008Q3 levels. UK employment in Construction is now 12% below the 2008Q3 level.
- Services suffered a much faster fall (-5%) than the UK (-1%).

Workforce Jobs (thousands), seasonally adjusted

Industry >	NE				United Kingdom			
	Production (B-E)	Construction (F)	Services (G-S)	Total	Production (B-E)	Construction (F)	Services (G-S)	Total
2006Q3	147	91	928	1,172	3,305	2,271	25,463	31,428
2007Q3	146	103	908	1,162	3,260	2,339	25,659	31,653
2008Q3	142	85	927	1,162	3,146	2,364	25,816	31,729
2009Q3	121	90	953	1,173	2,902	2,107	25,459	30,873
2010Q3	140	85	908	1,141	2,805	2,080	25,374	30,703

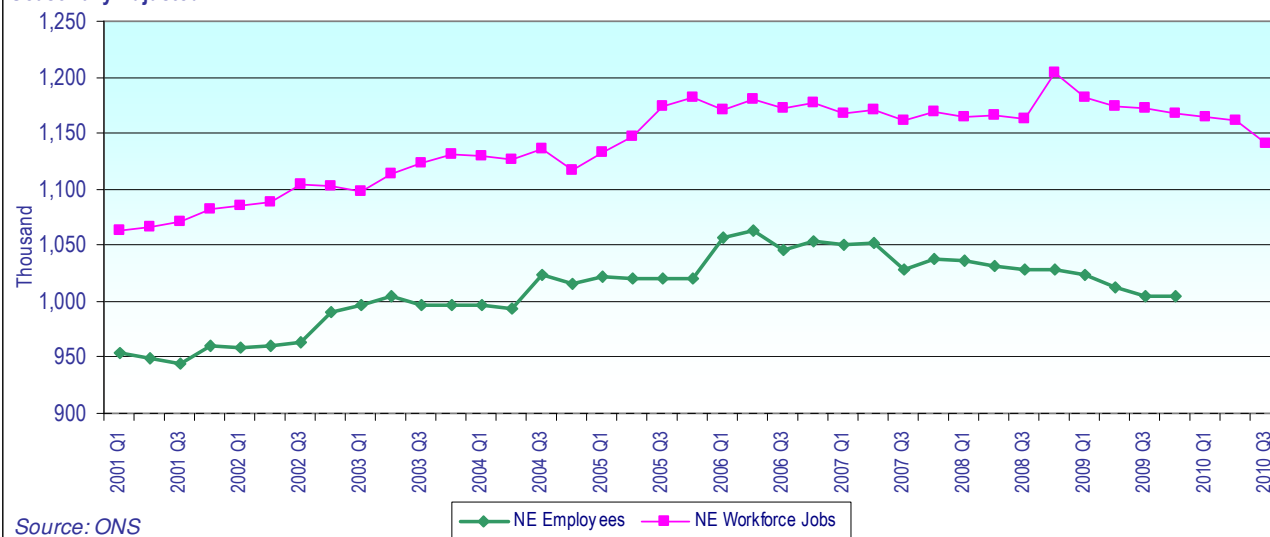
Percentage change in the year to:

2010Q3	16%	-6%	-5%	-3%	-3%	-1%	0%	-1%
--------	-----	-----	-----	-----	-----	-----	----	-----

Source: ONS, Economic and Labour Market Review.

Total Employees and Workforce Jobs - NE

Seasonally Adjusted



Caution: The regional employees series called by ONS the short-term employment series (STES) has a history of substantial revisions. It was revised upward in 1999 (after the new ABI in 1998) and the rise at end 2005 appears unreal. TWRI advises that the graph should be regarded as a broad indication, not a precise measure. More detail is available in ONS' monthly publication 'Economic and Labour Market Review.' The Workforce Jobs (WFJ) series is now showing a downward trend after a period of stability.

¹¹ Workforce jobs include employees, self-employed, those on a government training scheme and HM forces.

§7 Tables of Local Job Gains and Losses

Summary of job gains and losses announced in the press,
October 1st - December 31st 2010, for Tyne and Wear

District	Gain	Loss	Net
Gateshead	147	22	125
Newcastle	487	2,193	-1,706
North Tyneside	1,125	0	1,125
South Tyneside	250	1,200	-950
Sunderland	859	0	859
Unallocated (Districts to be determined)	0	100	-100
Tyne and Wear (Total)	2,868	3,875	-1,007

Note: Unallocated gains and losses are usually estimates at County-level of regional change.

TWRI has a database of job gains and losses announced in the press since the beginning of 1996. Listings are available on request by District, industry (2 Digit SIC 80) and cluster. This database and the lists given below, record gains and losses reported in the press.

Caution: The press tends to under-record net job losses overall (by roughly 2,200pa on average, TWRI estimates by comparison with other sources). For example, particularly notable under-recordings have been numerous small losses from retailing and possibly from the offshore engineering industry. The **construction industry is especially hard to track and measure** (and grew very significantly from about 1999 until 2006). Small firms may not be included at all in the data below, since gains of fewer than 10 are sometimes not recorded by TWRI as they are not generally reported by the press.

Public Sector Job Losses reported¹² in the City Region¹³ in 2010:

Job Loss	Organisation	Industry	Location	Date reported
135	Business and Enterprise North East (BE-NE)	Other public service	Durham	22 Oct
88	City of Sunderland College	Education	Sunderland	30 Apr
1,600	Durham County Council	Public admin	Durham	15 Dec
29	Durham County Council	Health	Durham	13 Nov
230	Durham County Council	Health ¹⁴	Durham	29 July
86	Durham Police	Public admin	Durham	18 Dec
2,000	Newcastle City Council	Public admin	Newcastle	28 Oct
60	NHS North of Tyne	Health	Newcastle	30 July
50	NHS North of Tyne	Health	North Tyneside	30 July
50	NHS Trust	Health	Newcastle	17 Aug
85	NHS Trust	Health	Sunderland	17 Aug
37	NHS Trust	Health	South Tyneside	17 Aug
1,000	Northumberland County Council	Public admin	Northumberland	4 Sept
360	Northumbria Police	Public admin	Tyne and Wear (Districts Unknown)	23 Nov
90	Northumbria Police	Public admin	Northumberland	23 Nov
100	Northumbria University	Education	Newcastle	1 July
44	One North East	Public admin	Newcastle	25 Sept
62	Passport Office	Public admin	Durham	22 May
62	Rural Payments Agency	Public admin	Newcastle	5 Feb
50	Skill Training Ltd	Education	Durham	5 May
55	South Tyneside College	Education	South Tyneside	3 May
1,200	South Tyneside Council	Public admin	South Tyneside	5 Nov

¹² Losses are not necessarily confirmed.

¹³ Some losses in Northumberland and Durham may be outside the City Region.

¹⁴ Care home staff.

Note: In 2010, in the North East, the main public sector job gain was at NaREC (National Renewable Energy Centre), Blyth (+300).

Job Gains in Tyne and Wear (October-December). (2,868 Job Gains)

Gains	Employer	Ref
1,000+ jobs	OGN , Hadrian Yard, Wallsend, North Tyneside Oil and gas engineering and fabrication contractor. New jobs after securing a £150m oil contract.	(J 23/11)
759 jobs* (subject to Planning permission)	Tesco , Sunderland Retail Park, Sunderland. Retailing. It plans to open a new store and four smaller retail units. Sunderland City Council said it was "minded to approve" plans to build the new superstore.	(J 15/10)
250 jobs*	Morrisons , South Shields, South Tyneside. Retailing. It is opening a store on Ocean Rd. on Nov. 22. The building was previously occupied by ASDA.	(Sh Gaz 6/11)
120 jobs (in 2011)	Jet2 , Newcastle Airport, Newcastle Airline. The budget airline will be adding five new routes to Alicante, Algarve, Toulouse, Krakow and Prague from next summer. It will be the airport's biggest airline when it completes its growth plan.	(J 18/11)
100 jobs	International Innovative Technologies , Team Valley, Gateshead. Mechanical Engineering. The company has opened a 20,000sq ft factory and welcomed buyers to pitch for contracts for its mills for grinding minerals from companies in the construction, aggregates and recycling sectors	(J 22/10)
100 jobs* (in 2011)	Fluid Group , Newcastle Leisure group. It is looking to open a pub and two coffee shops.	(J 22/12)
80 jobs (over next few months)	Fusion , Sunderland Call centre operator. It has won more work, including from Santander, Lloyds TSB and Halifax. The additions will take its workforce to just under 500. Fusion is part of the BGL Group.	(J 10/12)
70 jobs* (by summer 2011)	Waitrose , Jesmond, Newcastle Supermarket. New jobs with the opening of its new convenience store in Jesmond, Newcastle, by summer 2011.	(www.insidermedia.com 16/11)
60 jobs	Nestle Confectionery UK , Fawdon, Newcastle Confectionery manufacturer. It wants to close its West Yorkshire site as part of an efficiency drive. It currently employs 500 staff in Newcastle.	(J 11/12)
60 jobs*	Ebiquity , Quorum Business Park, North Tyneside Media firm. New jobs with the opening of a NE office. It delivers a range of media monitoring and analytical services to UK and overseas clients.	(J 17/12)
40 jobs* (in 2011)	Euro Hostel , Carliol Square, Newcastle. Hotel. Opening in March 2011.	(Chr 19/10)
20 jobs* (+20 more by 2012)	UK Haptics , Balliol Business Park (HQ) in North Tyneside. Software. The firm has moved its 20-strong workforce from Rothbury in Northumberland. It has secured funding from One NE and plans to double its workforce over the next two years. It has developed a £28,000 3D virtual reality simulation of a hand to help medical students learn and practice new techniques.	(J 21/10)
30 jobs (in the last year)	Warmseal , Newcastle Replacement window and door company. It expects revenues to rise over 6.5% to £16m in 2010.	(J 1/12)
25 jobs*	Commercial Financial Solutions , Newcastle Commercial mortgage lender. New jobs to be created with the launch of the commercial mortgage lender. It looks to support businesses across the UK from a £323m investment pot.	(J 15/12)
Est. 25 jobs*	Crownfold , North Tyne Ind. Est., Benton, North Tyneside. Construction/Home improvements. The Gateshead company is planning to create around 25 jobs [est.] with the opening of showrooms at North Tyne Industrial Estate in Benton, and Heighley Gate Garden Centre near Morpeth	(J 20/10)

Gains	Employer	Ref
	in Northumberland, creating 50 jobs. The company, which has already almost doubled in size over the past two years, sells windows and conservatories. [See also 'Job gains NE'] [The company trades under the Pennine, Budget and Paramount brands]	
20 jobs (by 2012)	The Redforrest Group , Team Valley, Gateshead. Electrical/electronics. It is to add jobs to its 130-strong workforce by 2012. The company makes and installs signs. It is based in Team Valley in Gateshead.	(J 2/11)
20 jobs*	Popolo Café , Eldon Garden, Newcastle. Restaurant. New opening (Part of Principle Leisure).	(J 1/10)
17 jobs (by 2013)	Executel , Gateshead. Telecoms. The company plans to increase its workforce to 60 by 2013. The telecoms specialist recently secured a contract with phone giant O2 to see it provide mobile phone packages to firms across the UK and act as a first point of contact for its business customers.	(J 4/11)
12 jobs (by 2013)	Foster Findlay Associates (FFA) , Newcastle. Business services/Engineering Services. The firm has created an initial six jobs, planning to double the number over the next three years. FFA currently employs 18 people.	(J 19/10)
10 jobs (by 2012)	Oil Consultants Ltd , Washington, Sunderland Oil consultants. It expects sales to rise to £25m.	(J 16/11)
10 jobs	LamasaTech , Sunderland Software firm. It plans to add around 10 jobs to its Sunderland workforce.	(J 16/12)
10 jobs (in 2010/11)	Nigel Wright Recruitment , Newcastle. Business Services/Employment agency. The firm expects its revenue to rise 10% to £15m in 2010/11 and 15% in the following years.	(J 3/11)
10 jobs	Freeman Catering Butchers , Gateshead. Food and Drink. It was awarded over £155,000 grant from the Rural Development Programme for England (RDPE), to help develop a supply chain.	(J 10/11)

* new openings.

Jobs Saved in Tyne and Wear

	Employer	Ref
60 jobs (est)	Cruise , Newcastle Retail chain. Jobs saved as it was bought out of administration by Sir Tom Hunter. Cruise has 10 stores, including two in Newcastle, and employs around 300 staff.	(J 31/12)

Job Losses in Tyne and Wear (3,515 Job Losses) (October-December).

Caution: the public sector job losses have not necessarily been confirmed.

Losses	Employer	Ref
2,000 jobs (by 2014)	Newcastle City Council . Local authority. The council needs to make savings of £110m (by 2014) due to the latest government cuts.	(J 28/10)
1,200 jobs (by 2014)	South Tyneside Council . Local authority. It is preparing to cut almost 30% of its workforce, over the next four years.	(Sh Gaz 5/11)
93 jobs	Robson Brown (RB) , Newcastle Advertising and media company. It has gone into administration. Currently, 74 staff have been made redundant, while a further 19 are retained to help wind up its business. RB was acquired earlier this year by Los Angeles-based Round2. London-based ThinkBDW, part of Mission Marketing Group has acquired Robson Brown's assets.	(J 3/12, 15/12)
70 jobs (Job	Digital Windows , Newcastle	(J 10/12)

Losses	Employer	Ref
losses from March 2011)	Marketing company. It plans to close its Buy.at business in Newcastle from March 2011. The affiliate marketing company wants to consolidate all its UK operation in London. [Buy.at employs approx. 70 people – Ed.]	
60 jobs	Nexus , presumably based in Newcastle (where the HQ is located). Nexus is the operator of Tyne and Wear Metro. The cut of over 60 jobs by March is almost one in 10 of its workforce. [Note: since April, DB Regio has operated the Metro.]	(J 4/10)
40 jobs	Lloyds Banking Group , Tyne and Wear. Bank. TWRI estimates ~40 job losses in TW. [4,500 jobs across the UK]	(FT 14/10)
30 jobs	Dorin Construction , based in Newcastle. It has made around 30 redundancies since the start of the recession. The company employs 120 people.	(J 1/10)
22 jobs	Rok , Gateshead. Construction. 22 jobs have been cut at Rok's operations in Gateshead where it employed 121 people. The Exeter-based building services company went into administration, making, so far, around 1,400 redundancies.	(N. Echo 12/11)
Unknown	Eaga , Newcastle Green services provider. It is to cut up to 700 jobs nationally among employees working on the Warm Front scheme. The government has cut funding to the programme by two-thirds (£500m) over the next two years. The contract accounts for 45% of the Newcastle business. Eaga did not comment on how many jobs could be lost in Newcastle.	(J 14/12)

Jobs at risk in Tyne and Wear

Losses	Employer	Ref
46 jobs	Leaseway Vehicle Rental Ltd , Blaydon, Gateshead Vehicle rental company. The Glasgow-based business went into administration after suffering "trading difficulties" due to the economic downturn.	(J 2/12)
30 jobs	De La Rue , Team Valley in Gateshead. Printing. The bank-note printing company may be preparing to cut up to 30 jobs at its Gateshead base, where it employs 180 staff, due to a fall in orders.	(J 10/11)
26 jobs	NHS , Newcastle. Health. The NHS walk-in centre at the Jury's Inn Hotel in Newcastle city centre is set to close in April 2011. The £1m cost of running the clinic was said to be too high.	(J 25/10)
Unknown	Hewlett Packard (HP) , North Tyneside and Sunderland. Electronics. The company plans to cut 1,300 jobs across the UK and move work overseas. This is in addition to the 900 jobs to be lost by the end of October. HP has sites in North Tyneside and in Washington, Sunderland.	(J 12/10)

Potential job gains in Tyne and Wear

Gains	Employer	Ref
2,200 jobs (from 2011)	Silverlink Developments , Stephenson Quarter, Newcastle. 2,200 [construction] jobs could be created from 2011 [starting] with the development of a four-star hotel behind Newcastle's Central Station.	(J 28/10)
500 jobs*	Sainsbury's , Southwick, Sunderland. Retailing. The supermarket has signed an agreement with developer Terrace Hill, which is currently in pre-application discussions with Sunderland City Council. The store is planned on the former Jennings car showroom, on Riverside Road.	(J 11/10)
150 jobs (est) (in 2011)	ASDA , Tyne and Wear Supermarket. It has revealed plans to create around 7,500 jobs through store openings, expansion of its home shopping service and its recent takeover of Danish supermarket Netto in the UK.	(J 17/11)
Est. 30 jobs	Northridge Care Ltd , North Tyneside.	(J 3/11)

Gains	Employer	Ref
	Care home operator. It is set to create around 90 jobs when rolling out a string of short-break holiday developments for people with disabilities in North Tyneside, Gateshead and Northumberland as part of a £1.25m investment. The business was set up three months ago. [Est. 30 jobs at each site – Ed.]	
Est. 30 jobs	Northridge Care Ltd , Gateshead. Care home operator. It is set to create around 90 jobs when rolling out a string of short-break holiday developments for people with disabilities in North Tyneside, Gateshead and Northumberland as part of a £1.25m investment. [Est. 30 jobs at each site – Ed.]	(J 3/11)
Est. 20 jobs (by 2013)	Morrisons , Tyne and Wear. Retailing. It is to create 1,000 jobs for homeless and vulnerable people by 2013. [This could potentially create ~20 jobs in TW – Ed.]	(J 1/11)

Job gains in The North East

Gains	Employer	Ref
300 jobs	Allseas , Teesside Offshore company. It has been appointed to engineer and install a 100 km gas pipeline from Teesside to the North Sea <i>Breagh</i> oil field.	(J 1/12)
100 jobs	Touch Local , Stockton, Teesside. Online directory. Jobs to be created at its contact centre. The company won a series of contracts and £151,000 from One NE to fund its expansion plans.	(J 22/10)
100 jobs	AAF-McQuay , Cramlington in Northumberland Mechanical Engineering.. The company, which employs around 350 people, makes industrial-scale air-filtration equipment for gas turbines and air conditioning units for commercial uses such as hospitals and shopping malls. It expects its revenues to double to £140m.	(J 9/11)
75 jobs	Alnmaritec , Port of Blyth in Northumberland. Boat manufacturer. Alnmaritec is to increase its workforce to 110. The company builds aluminium boats.	(J 29/10)
70 jobs	Longbenton Foods , Amble in Northumberland Food manufacturer. It has re-employed 70 former Northumberland Foods' staff after acquiring its assets, land and buildings. The North Tyneside food producer said the number could rise to 100, as the business grows at the Amble factory.	(J 29/10)
~ 65 jobs* (by 2013)	MTL Group , Port of Blyth in Northumberland. Metal goods/Steel fabrication. It is setting up a manufacturing base, expecting to create 60-70 jobs over three years. It makes steelwork for wind-turbine manufacturers.	(J 29/10)
60 jobs	Hadrian Healthcare , Blyth, Northumberland. Care home. It is set to create up to 60 jobs. The group has been granted permission to build the 58-bed care home on the former Plessey Road First School.	(J 1/10)
60 jobs (by 2015)	Potts Printers , Cramlington, Northumberland. Printing. The company plans to increase its workforce to around 200 over the next five years to handle the increased workload. The firm expects its turnover to double to £12m over the next 10 years.	(J 1/11)
40 jobs*	JD Wetherspoon , Bedlington, Northumberland. Hotels and Catering. Opening of a new pub.	(J 9/11)
40 jobs (by 2012)	Osborne Engineering Ltd (OEL) , Bedlington, Northumberland. Mechanical Engineering. The company plans to create the skilled jobs by 2012. It has invested £1.8m in expanding (doubling) the size of its base in Cramlington to 2,300sqm, with a 1,000sqm training facility. OEL [which makes metal components] aims to double its turnover to £20m by 2015.	(J 14/10)
Est. 25 jobs*	Crownfield , near Morpeth in Northumberland. Construction/Home improvements. Opening of a new showroom at the Heighley Gate Garden Centre.	(J 20/10)

Jobs Saved in the North East

Losses	Employer	Ref
90 jobs	EJ Badekabiner (EJB), Cramlington, Northumberland Bathroom factory. It has been bought out of administration by Continental Shelf 515, a subsidiary of Galliford Try.	(J 16/11)

Job losses in the North East

Losses	Employer	Ref
1,600 jobs	Durham County Council , Co. Durham Public Admin./Local authority. It is to cut 1,600 jobs to meet the government's budget cuts.	(J 15/12)
1,000 jobs (by 2011)	Northumberland County Council . Public Admin./Local authority. Posts to be cut over the next year.	(J 5/11)
450 jobs	Northumbria Police , Northumberland Public Admin./Police. It is to cut civilian posts to meet the government's anticipated £34m budget cut. The force employs about 6,600 staff (4,100 police officers and 2,500 civilian staff, including special constables and community support officers).	(J, Sd Echo 23/11)
140 jobs	Durham Police , Co. Durham. Public Admin./Police force. The authority is to cut posts to cope with an estimated 20% cut in funding.	(J 21/10)
135 jobs	Business and Enterprise North East , Seaham (HQ), Co. Durham. Public Admin./Business Support. To cut a third of its workforce. [HQ in Easington District.]	(J 22/10)
96 jobs	EJ Badekabiner in Cramlington, Northumberland Construction. 96 made redundant, as it went into administration. 86 staff are left at the plant. It is said to be Europe's largest producer of concrete and steel bathroom pods. [see jobs saved North East]	(J 9/10)
86 jobs	Durham Police , Co. Durham Public Admin./Police. It announced it will cut 86 [civilian] jobs (~ 77 full-time posts) to meet the government funding cuts. [The police force had previously reported that it would cut up to 140 posts – Ed.]	(J 18/12)
29 jobs*	Durham County Council , Durham City, Co. Durham. Public Admin./Local authority. It is to close its public health labs at Meadowfield.	(J 13/11)

Potential job gains in the North East

Gains	Employer	Ref
1,000 jobs	GlaxoSmithKline , North East Pharmaceutical firm. It is considering building a new plant in the NE, potentially creating around 1,000 jobs. It already employs 800 staff at its Barnard Castle (Co. Durham) plant, and is taking advantage of the government's 10% cut in corporate tax to invest £500m in manufacturing.	(J 30/11)
340 jobs	RES , Blyth, Northumberland. Green energy company. It wants to build a 100 megawatt biomass-fuelled power station at Battleship Wharf. A planning application is expected to be submitted by March 2011.	(J 4/12)
150 jobs	Tesco , Amble, Northumberland. Supermarket. It has been named as the operator of the new store planned in Amble. A planning application for the £5m scheme, a joint venture between the Duke of Northumberland and Tesco, has been submitted.	(J 2/12)
Est. 30 jobs	Northridge Care Ltd , Northumberland. Care home operator. It is set to create around 90 jobs when rolling out a string of short-break holiday developments for people with disabilities in North Tyneside, Gateshead and Northumberland as part of a £1.25m investment. [Est. 30 jobs at each site – Ed.]	(J 3/11)

The NERIP report, Job Gains and Losses - 2010 Review, includes a list of major job gains and losses in Tyne and Wear.

[http://www.nerip.com/Download/1214/Job%20Gains%20and%20Losses%202010%](http://www.nerip.com/Download/1214/Job%20Gains%20and%20Losses%202010%20Review.pdf)