



State of the Tyne and Wear Labour Market Report Autumn 2010

This edition covers developments
mainly in the period
July – September 2010

Ref:LMR 10/4

November 2010

CONTENTS

Summary and Key Points	1
§1 Employment	2
§2 Job Change Announcements	3
§3: Claimant Unemployment	5
§4 Unemployment Forecasts	9
§5 Vacancies	10
§6 Employment Change by Industry	11
§7 Tables of Local Job Gains and Losses	12

TWRI
1st Floor Provincial House
Northumberland Street
Newcastle upon Tyne
NE1 7DQ
Tel: (0191) 277 1912
Fax: (0191) 277 1911
E-MAIL: twri@twri.org.uk
WEBSITE: www.twri.org.uk

SUMMARY and KEY POINTS

This report covers the 3 months to September.

Labour Market Overview

The local economy seems to have slowed somewhat from Q2. Manufacturing job growth came to a stop¹. In the summer months, claimant unemployment stopped falling. Notified vacancies are, however, up about 10% from a year ago. Nationally, about three-quarters of the net job gains are part-time.

- 1 In Q3, on balance, TW firms reported continued decline in private services' workforce (the much bigger of the two sectors). After unusual growth, manufacturing returned to zero workforce growth² (§1).
- 2 Job Change announcements by firms in TW were positive (gains exceeded losses by about 400 in Q3) (§2 and 7). This was weak compared to the very strong growth in Q3 and Q4 2009. However, it was better than the large net loss in Q1 2009. [Caution: this source omits many job losses and timings of the gains coming into effect are variable. See §2 for more details.]
- 3 Claimant unemployment in TW, however, was down up by about 250 (+0.8%) from June³ (§3).
 - Compared to a year ago, claimant unemployment in September was lower in all TW Districts (-2,800). The largest fall was in Sunderland (down by over 1,000). At ward level, however, rates were higher in 14 of TW's 111 wards. The rises were particularly large in Walker (Nc), Elswick (Nc) and Wallsend (NT).
 - Notified vacancies⁴ in the 3 months to August were up by 10% from a year

before (§5). They were down just 6% from 2 years ago. Notified vacancies are up in three Districts from two years ago (by 8-33%), but Gateshead fell (-10%) and Sunderland (-33%).

Unemployment

In the UK, in September, the seasonally adjusted claimant count rose by 5,300 (0.4%), to reach 1.47m. This is slightly up from 1.46m in June, but 144,100 lower (-8.9%) than a year ago.

Official UK unemployment (using the LFS definition) is estimated to have fallen in the 3 months to August, compared with the previous 3 months, by 20,000 to 2.448m. Over the same period the number of inactive people of working age⁵ fell by 66,000. Thus jobs seem to be going mainly to previously inactive people (rather than the unemployed).

Note: the forecasters do not expect unemployment to rise rapidly in 2011 (§4). The average of independent forecasts for the UK claimant count (of unemployment) is consistent with a further rise in Tyne & Wear of about 2,000 in 2011 – which would take the count back to about 37,000; still lower than the January total.

Local Job Gains

There were few large gains in Q3, but they included **Balfour Beatty (200)** in North Tyneside. **2 Touch (80)** is expanding in Sunderland.

Local Job Losses

The biggest losses were from **NHS North of Tyne** [hospitals] (-166 by 2014) expected to be from Newcastle's RVI and Freeman hospitals, and North Tyneside General. **Northumbria University** (about -100) in Newcastle.

Date: 9th November 2010

¹ At least according to the NE Chamber of Commerce survey (NE Business Barometer, NEBB) TW results.

² NE Business Barometer (TW results only used here).

³ It is possible that the flattening of TW's claimant unemployment has also been driven by fewer scheme places for unemployed people.

⁴ to JobCentre Plus

⁵ Now age 16-64 for both Men and Women.

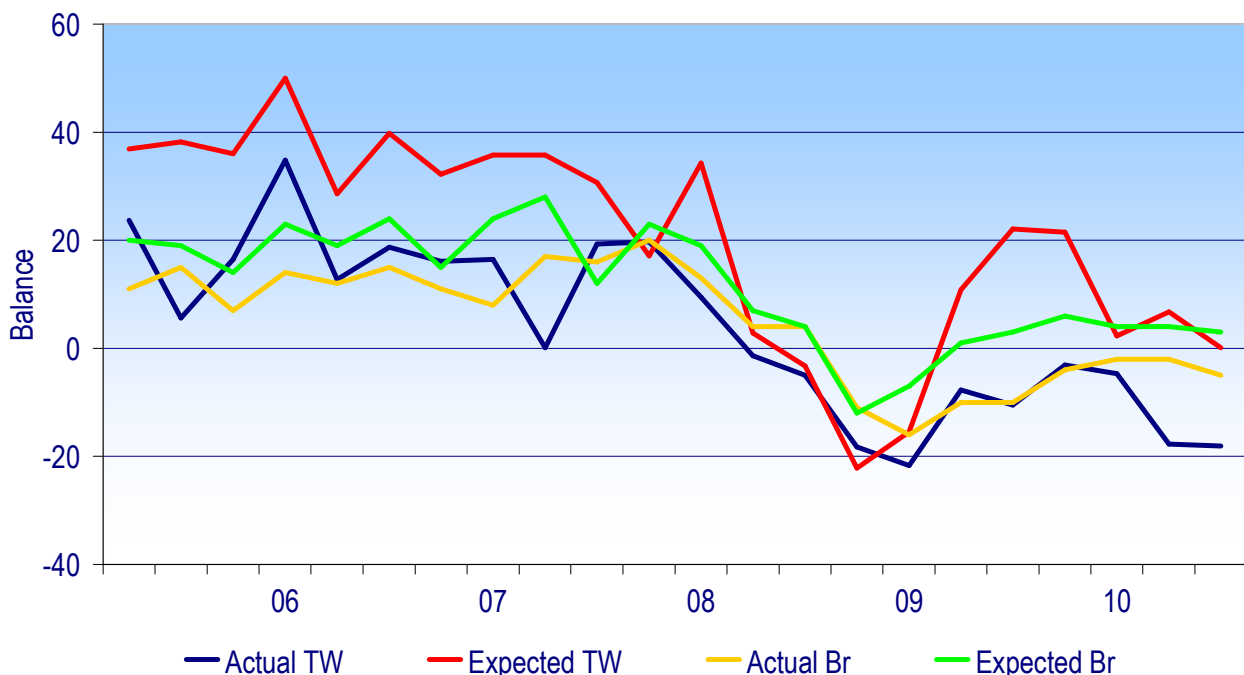
§1: Employment

In Q3 2010, as in Q2, Tyne & Wear’s service firms reported a marked fall in employment (balance -18pp). TW service firms have now reported markedly more weakness than British service firms for two successive quarters⁶.

On balance, ‘actual employment’ for Service firms in Tyne & Wear has been negative (i.e. its level has been falling) for the last ten quarters (since summer 2008); for Britain the employment balance has been negative for the last eight quarters (the last quarter of 2008).

On balance, service firms in TW are not expecting employment growth in the next quarter. Historically, however, TW service firms have usually been over-optimistic by around 15-20pp.⁷

Service Workforce Britain and TW



Source: Business Survey NE (TW data) – from Economic Research Services; national data from British Chamber of Commerce. Caution: these measures weight all firms equally, and make no allowance for the different scale of job changes in different firms and industries.

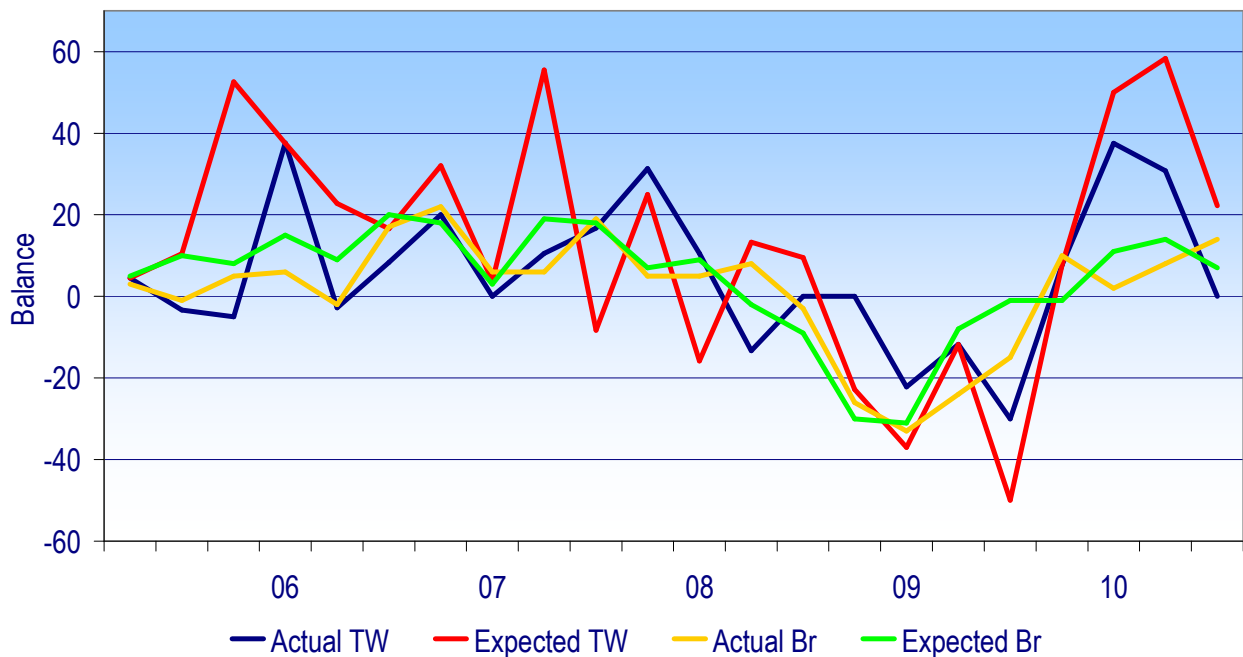
Caution: as the two surveys were of firms, these data do not cover the public sector part of services. The public sector accounts for about a third of service sector jobs in TW.

⁶ However, the British service firms *on a weighted basis* show almost balance (-1 in Q3 2010).

⁷ British service firms have been markedly less over-optimistic in their expectations (by around 10pp versus actual).

In Q3, Tyne & Wear manufacturing firms reported zero employment change (on balance, blue line), after three successive quarters of strong employment growth. In contrast, in Britain, reported manufacturing employment growth continued its (milder) acceleration (yellow line).

Manufacturing Workforce Britain and TW



Caution: the employment expectations of manufacturing firms (for the next 3 months) are usually poor indications of the actual outcome. In 2009 Q3, this was extreme; the record gloomy manufacturing employment prospects (about -50pp) among TW's firms (red line) was followed by employment growth!

Manufacturing firms in TW have returned (in 2010 Q3) to a position akin to that before the recession, but with slightly slower reported employment growth.

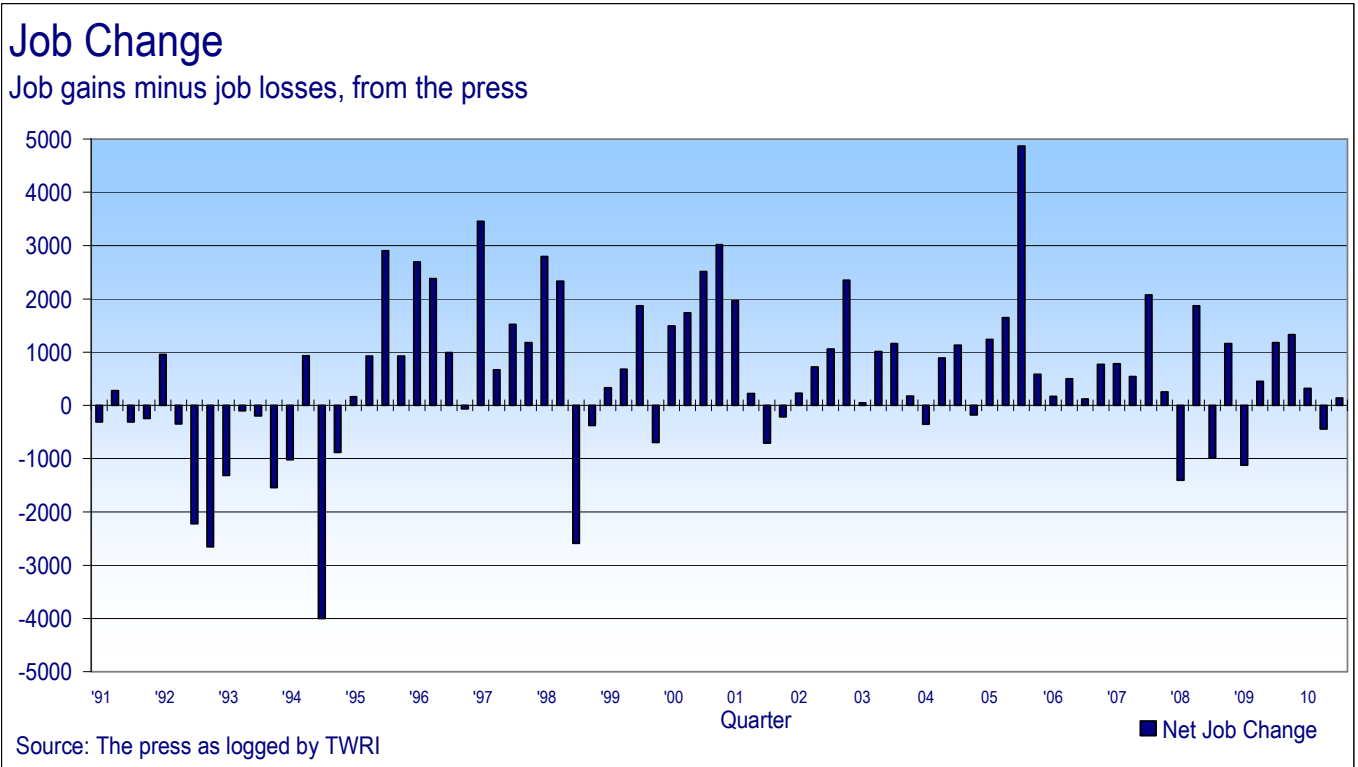
Caution: TW manufacturing returns are particularly low in number.

§2: Job Change Announcements

Job Changes in the Q3⁸ period (as reported in the press), on a net basis, were slightly positive (to about +400). This follows Q2 which was negative (-400). The previous four quarters had been more positive. All are much better than in Q1 2009 when a net loss of over a 1,000 was recorded⁹. In Q3, the press reports suggested net losses in Newcastle only. Note: these data do not report all job gains and losses.

⁸ July-Sept

⁹ And two quarterly losses in 2008, each of a 1,000 or so.



A full itemised list of reported job gains and losses is given at the end of this report (in size order).

Standard Note on interpretation of press reports of Job Change (JC), aggregated by TWRI:

This source gives good coverage of market services and manufacturing – together about half the economy. It therefore has important gaps ('omissions'), the three main ones being;

- public service employment growth was never reported in any significant way (1997-2007),
- job losses from small retailers are never captured effectively and
- construction (as with other sources) cannot be recorded at all.

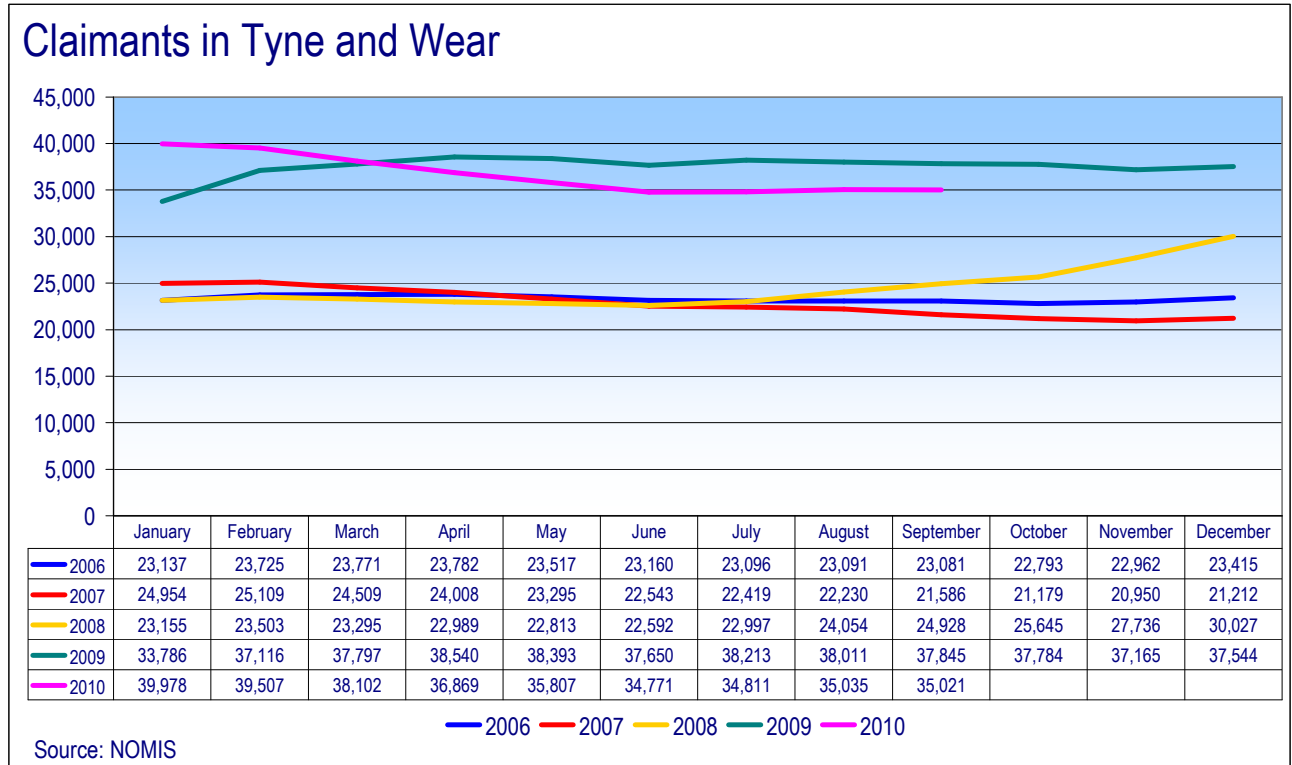
A fourth gap was created through temporary jobs being reported but their demise not being.

TWRI analysis of the long-term series (14 years) has found the JC series typically omitted about 2,000pa job losses (but this is variable). This might be partly explained by the time lags from announced gains to their fruition.

§3: Claimant Unemployment

In Tyne and Wear, claimant unemployment rose marginally over the summer, up 250 from June to September. This follows a recent peak in January 2010, from which it fell by over 5,000 (-13%) to 34,771 in June 2010.

The chart (below) shows comparison with previous 'normal' years such as 2006 and 2007, when unemployment fell by about 100 or 1,000 over this 3 month period.



In the ten months from July 2008 to April 2009 claimant unemployment rose by almost 16,000 in Tyne and Wear, with the majority of the increase occurring between November 2008 and February 2009. This is reflected in the annual average unemployment figures.

In September 2010, there were still over 2,800 fewer claimants in Tyne and Wear than a year earlier (-7.5%). Claimant unemployment in Tyne and Wear has been on a downward trend since April 2009¹⁰.

Compared to September 2008, Tyne and Wear's claimant unemployment in September 2010 was over 40% higher. The increase at county level reflects the sustained rise in claimant unemployment that began in July 2008 and continued until April 2009.

¹⁰With seasonal rises in December and January.

Claimant* Unemployment, September 2010							
	Total	Rate %	Change since Sept 2008		Change since Sept 2009		
			Number	%	Number	%	
Gateshead	5,505	6.4 R	1,598	29.0	-695	-12.6	
Newcastle upon Tyne	8,572	7.1 R	2,288	26.7	-493	-5.8	
North Tyneside	5,557	5.8 R	1,611	29.0	-418	-7.5	
South Tyneside	6,095	8.9 R	1,724	28.3	-179	-2.9	
Sunderland	9,292	7.2 R	2,872	30.9	-1,039	-11.2	
Tyne & Wear	35,021	7.0 R	10,093	28.8	-2,824	-8.1	
Durham County	12,492	-	3,985	31.9	-1,929	-15.4	
Durham4**	7,950	-	2,794	35.1	-860	-10.8	
Northumberland County	6,858	-	1,767	25.8	-623	-9.1	
Northumberland4 #	5,870	-	1,385	23.6	-550	-9.4	
Tyne & Wear City Region	48,841	-	14,272	29.2	-4,381	-9.0	
North East	78,310	6.5 W	23,010	29.4	-6,766	-8.6	
Great Britain	1,376,735	4.4 W	461,804	33.5	-160,885	-11.7	
United Kingdom	1,434,770	4.4 W	490,054	34.2	-156,342	-10.9	

Data rounded to nearest 5.
** Durham4=Chester-le-Street, Derwentside, Durham City and Easington.
Northumberland4= Blyth Valley, Castle Morpeth, Tynedale and Wansbeck.
- rates not available
* Claimants of Jobseekers' Allowance.

R= Residence-based. District and county claimant count rates are the number of unemployed now as a percentage of the estimate labour force (the economically active population), mid-2007 (TWRI ests based on ONS population ests.). These are new denominators, from May 2009.

W = Workforce-based. National and regional claimant count rates are the number of unemployed as a percentage of the estimated total workforce (the sum of unemployed claimants, employees in employment, self-employed, HM Forces and participants on work-related govt training programmes), at mid-2008.

Caution:
District and Tyne & Wear numbers are calculated using current (2004) wards. These numbers may vary slightly from figures extracted direct from NOMISWEB, which are based on 1991 wards and are no longer in complete alignment with current Tyne & Wear boundaries.

Source: ONS, Crown Copyright Reserved (NOMIS), TWRI.

In September 2010 the TW claimant unemployment rate¹¹ (7.0%) remained 0.6 percentage points lower than 12 months earlier. This is the same gap as from June 2010's rate (6.9%) to a year earlier. The Sept 2010 rate is up by 1.8pp from two years earlier. This is a marked narrowing from 2.2pp in June from June 2008 (4.7%)¹².

In the year to September, unemployment rates rose in 14 of Tyne and Wear's 111 wards. The rises were particularly big in Walker (Newcastle), Elswick (Newcastle) and Wallsend (N. Tyneside). (See map)

In the Tyne and Wear City Region, claimant unemployment in Sept 2010 was 9.0% lower than in Sept 2009; in percentage terms the Durham part (Durham4) benefited most (-10.8%). However, compared to Sept 2008, unemployment in the Durham4 was 35% higher in Sept 2010.

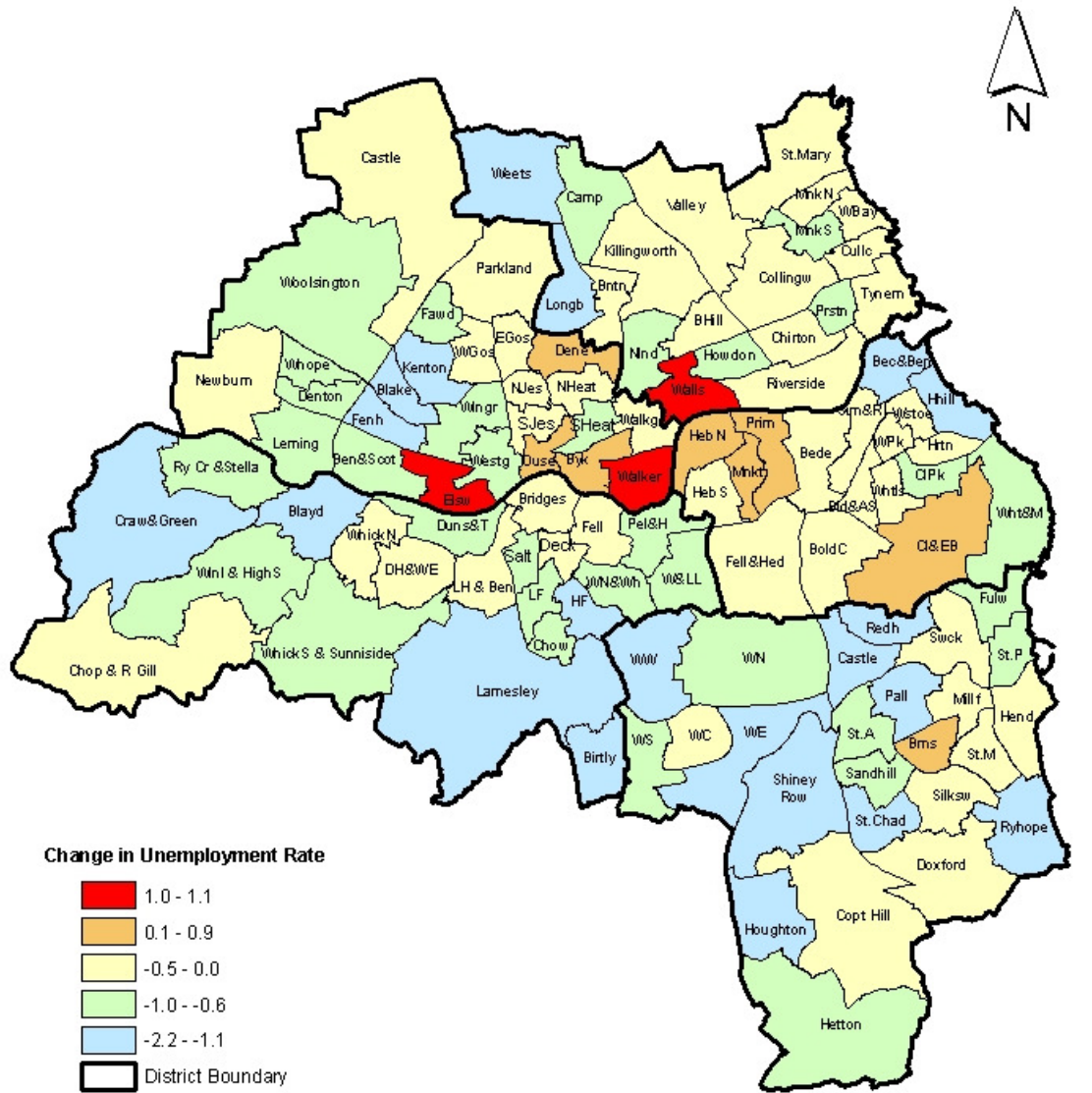
Claimant unemployment in the North East was 8.6% lower in Sept 2010 than a year earlier. In Sept 2010 the North East rate (6.5%) was 2.1 percentage points higher than the UK rate (4.4%).¹³

¹¹ TWRI (not ONS) estimated claimant unemployment rates.

¹² This is due to the rapid rise in unemployment in late 2008.

¹³ The estimated workforce in the area is used as the denominator for national and regional unemployment rates.

Change in Claimant Count Unemployment Rates, September 2009 to September 2010



Note: Rates are the number of unemployed as a percentage of the estimated labour force (the economically active population), at mid-2007 (TWRI ests. based on ONS population estimates).

Source: Office for National Statistics, Tyne & Wear Research and Information. Mapped by TWRI, © Crown Copyright, 2009, All rights reserved (Tyne & Wear Research and Information) (Licence No 10002987) Oct. 2010).

TYNE & WEAR



RESEARCH AND INFORMATION

Youth and Long-term Unemployment

Youth unemployment has fallen a bit less quickly in the year to September in Tyne & Wear (-9.8%), compared with the year to June (-14.3%). Youth unemployment (18-24s) was about 3-15% lower in all Tyne & Wear Districts in September 2010 compared to September 2009. The slowest percentage fall was in North Tyneside (-3.2%). The fastest falls were in Sunderland (-11.9%) and Gateshead (-14.8%). Compared with the UK (-13.5%), TW's youth unemployment fell over 3 percentage points more slowly (-9.8%; UK -13.5%); in the year to June (-14.3%) it had fallen more quickly than in the UK (-11.7%).

	Sept 2009		Sept 2010		Change 2009 to 2010	% Change
	Number	% of total	Number	% of total		
Gateshead	1,890	30.48	1,610	29.2	-280	-14.8
Newcastle upon Tyne	2,805	30.94	2,540	29.6	-265	-9.4
North Tyneside	1,745	29.21	1,690	30.4	-55	-3.2
South Tyneside	1,995	31.8	1,840	30.2	-155	-7.8
Sunderland	3,480	33.69	3,065	33	-415	-11.9
Tyne & Wear	11,915	31.48	10,745	30.7	-1,170	-9.8
Durham County	4,800	33.28	4,390	35.1	-410	-8.5
Durham4	3,035	34.45	2,865	36	-170	-5.6
Northumberland County	2,340	31.28	2,155	31.4	-185	-7.9
Northumberland4	2,060	32.09	1,900	32.4	-160	-7.8
Tyne & Wear City Region	17,010	32.0	15,510	31.8	-1,500	-8.8
North East	27,680	32.54	24,910	31.8	-2,770	-10.0
Great Britain	469,595	30.54	402,755	29.3	-66,840	-14.2
United Kingdom	487,880	30.66	421,845	29.4	-66,035	-13.5

Note: Youth defined as aged 18 to 24.
Data rounded to nearest 5.
Durham4=Chester-le-Street, Derwentside, Durham City and Easington.
Northumberland4= Blyth Valley, Castle Morpeth, Tynedale and Wansbeck.

Source: ONS, Crown Copyright Reserved (NOMIS), TWRI.

The rate of increase in long-term unemployment over the year to September 2010 has slowed markedly (for TW from 61% in the year to June to 26% in the year to Sept.). Indeed the *numbers* of people long-term unemployed (LTU) have generally dipped a little since June (so TW is down 130 at 4,960). North Tyneside's LTU is up, however, by 60 (8%) in September, compared with June.

Long-term Unemployment, September 2009 and September 2010						
	<u>Sept 2009</u>		<u>Sept 2010</u>		Change 2009 to 2010	% Change
	Number	% of total	Number	% of total		
Gateshead	605	9.8	790	14.4	185	30.6
Newcastle upon Tyne	955	10.5	1,030	12.0	75	7.9
North Tyneside	540	9.0	795	14.3	255	47.2
South Tyneside	840	13.4	1,005	16.5	165	19.6
Sunderland	1,010	9.8	1,340	14.4	330	32.7
Tyne & Wear	3,950	10.4	4,960	14.2	1,010	25.6
Durham County	1,275	8.8	1,785	14.3	510	40.0
Durham4	760	8.6	1,095	13.8	335	44.1
Northumberland County	705	9.4	845	12.3	140	19.9
Northumberland4	640	10.0	765	13.0	125	19.5
Tyne & Wear City Region	5,350	10.1	6,820	14.0	1,470	27.5
North East	9,820	11.5	12,355	15.8	2,535	25.8
Great Britain	162,920	10.6	245,250	17.8	82,330	50.5
United Kingdom	170,600	10.7	259,795	18.1	89,195	52.3

Note: Youth defined as aged 18 to 24.
Data rounded to nearest 5.
Durham4=Chester-le-Street, Derwentside, Durham City and Easington.
Northumberland4= Blyth Valley, Castle Morpeth, Tynedale and Wansbeck.

Source: ONS, Crown Copyright Reserved (NOMIS), TWRI.

§4: Unemployment Forecasts

Forecasts of Unemployment in the UK

The consensus of UK economic forecasts is consistent with a small rise in unemployment in Tyne & Wear of about 2,000 over the year to the last quarter of 2011. Future UK economic prospects are for growth to continue in 2011 at a similar rate to 2010 (although at below the normal rate). UK unemployment is forecast to rise by under 100,000 in 2011 (table, below). Note: the forecasters do *not* expect unemployment to rise substantially.

	2010	2011	Comments
Economic Growth	1.6%	1.7%	Economic growth forecasts have strengthened since July by about 0.5pp, but 2011 has weakened (by 0.4pp).
Claimant Unemployment	1.5m (Q4)	1.59m (Q4)	Unemployment to rise just 40,000 in 2010 ¹⁴ , then up fairly mildly in 2011 (up only 90,000).

Source: average latest revised UK forecasts, from HM Treasury's survey of independent forecasts (published by the Treasury in October 2010).

Note: the above independent view of prospects is close to those set out by the Treasury. The main risk over the next 3 years (to mid-2013) is downside, that growth could be slower. This could come from weak consumer spending, weak investment or from an economic shock from the Eurozone.

It is possible that TW may fare somewhat better than the UK in 2010, as the NE has a relatively large export-sector. Provisional data for Q2 2010 show a jump in the value of North East exports (+17% on the quarter). NE exports had fallen in Q1 by 8%. This

¹⁴ TWRI calculation on the assumption that forecasters use UK seasonally adjusted unemployment. This was about 1.473m in Sept 2010.

followed a rapid jump (+16.7%) in NE exports in Q4 from Q3; probably including a one-off boost due to re-stocking around the world.

The growth of EU economies is still central to NE exports as three-fifths of exports go here. These markets are growing again (especially Germany).

§5: Vacancies

Summary of Notified Vacancies, by TW District

Caution: Notified Vacancies do not have sufficient quality to be National Statistics. The data should be treated as indicative only.

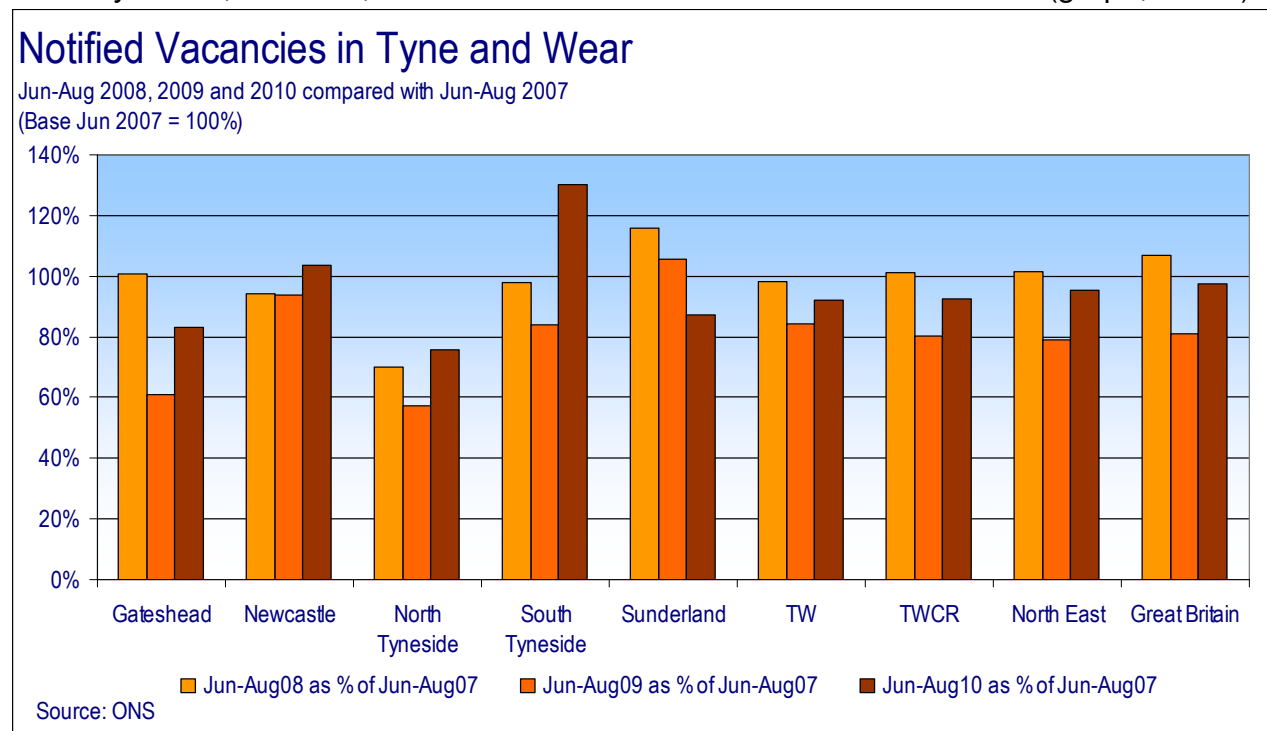
Notified vacancies in August were higher than two years ago in all Districts except Sunderland. Overall, Vacancies in TW are up 5% from two years ago, and 9% from a year ago.

Notified vacancies in Tyne & Wear									
	2008			2009			2010		
	June	July	August	June	July	August	June	July	August
Gateshead	1,843	1,502	1,687	842	851	1,351	1,164	1,106	1,885
Newcastle	2,475	1,594	2,301	1,984	1,816	2,544	2,154	2,083	2,772
North Tyneside	1,026	835	1,154	599	655	1,217	823	1,205	1,233
South Tyneside	572	584	918	631	490	663	851	811	1,104
Sunderland	3,666	2,499	2,979	3,400	2,075	2,860	2,030	2,392	2,458
Tyne & Wear	9,582	7,014	9,039	7,456	5,887	8,635	7,022	7,597	9,452

Source: ONS Crown Copyright Reserved [Nomis].

Note: August data have been presented because September data have been withdrawn.

Notified vacancies have recovered to 97% of pre-recession¹⁵ levels in Great Britain, and above 92% in TW (Jun-Aug data are the latest). Across TW, Sunderland, Gateshead and North Tyneside, however, still have lower notified vacancies than in 2007 (graph, below).



¹⁵ 2007.

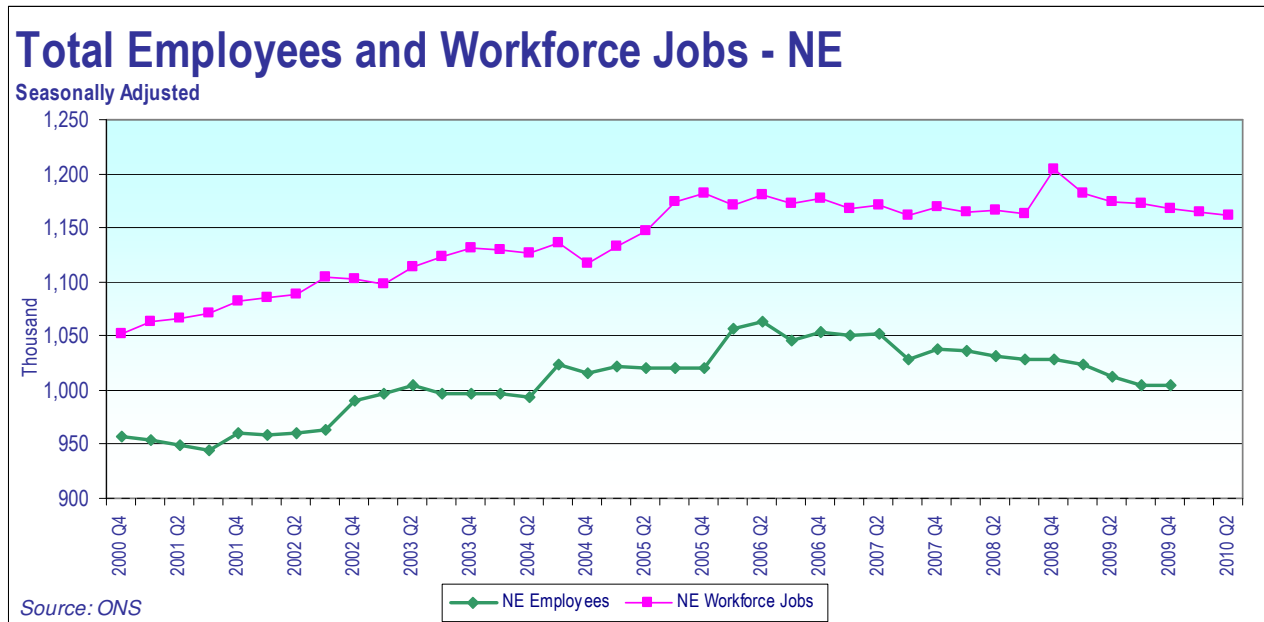
§6: Employment Change by Industry

In the year to Q2 2010, workforce jobs¹⁶ in the North East fell overall by 1% (-12,000);

- in Production rose very strongly indeed (+18%). This contrasts with a 3% fall in the UK. Growth was led by manufacturing (presumably taking back employees who were laid off in the depths of the recession).
- in Construction employment rose marginally, in contrast to a UK fall.
- in Services, the fall was much faster (-4%) than the UK fall (-0.4%).

Industry >	NE				United Kingdom			
	Prodn (B-E)	Constn (F)	Services (G-S)	Total	Prodn (B-E)	Constn (F)	Services (G-S)	Total
2006 Q2	148	94	927	1,180	3,308	2,274	25,366	31,344
2007 Q2	146	107	913	1,170	3,269	2,321	25,563	31,545
2008 Q2	143	87	929	1,166	3,185	2,299	25,880	31,780
2009 Q2	118	92	956	1,174	2,917	2,175	25,512	30,997
2010 Q2	139	93	917	1,162	2,841	2,103	25,408	30,801
	+18%	+1%	-4% ^a	-1.0%	-3%	-3%	-0.4%	-0.6%

^a The NE has a very odd 40% (-33,000) drop recorded for accommodation and food service employment.
Source: ONS, Economic and Labour Market Review.



Caution: The regional employees series called by ONS the short-term employment series (STES) has a history of substantial revisions. It was revised upward in 1999 (after the new ABI in 1998) and the rise at end 2005 appears unreal. TWRI advises that the graph should be regarded as a broad indication, not a precise measure.

More detail is available in ONS' monthly publication 'Economic and Labour Market Trends.'

The Workforce Jobs (WFJ) series has been strangely stable, even though unemployment has risen significantly since 2008. WFJ includes self-employed and people on govt training programmes.

¹⁶ Workforce jobs include; employees, self-employed, those on a government training scheme, HM forces.

§7 Tables of Local Job Gains and Losses

Summary of job gains and losses announced in the press,
July 1st - Sept 30th 2010, for Tyne & Wear

District	Gain	Loss	Net
Gateshead	179	50	129
Newcastle	364	639	-275
North Tyneside	230	50	180
South Tyneside	251	37	214
Sunderland	326	176	150
Unallocated (Districts to be determined)	60	0	60
Tyne and Wear (Total)	1410	952	458

Note: Unallocated gains and losses are usually estimates at County-level of regional change.

TWRI has a database of job gains and losses announced in the press since the beginning of 1996. Listings are available on request by District, industry (2 Digit SIC 80) and cluster. This database and the lists given below, record gains and losses reported in the press.

Caution: The press tends to under-record net job losses overall (by roughly 2,200pa on average, TWRI estimates by comparison with other sources). For example, particularly notable under-recordings have been numerous small losses from retailing and possibly from the offshore engineering industry. The **construction industry is especially hard to track and measure** (and grew very significantly from about 1999 until 2006). Small firms may not be included at all in the data below, since gains of fewer than 10 are sometimes not recorded by TWRI as they are not generally reported by the press.

Known Public Sector Job Losses reported in the six months January-June 2010:

Job Loss	Organisation	Industry	Location	Date reported
88	City of Sunderland College	Further Education	Sunderland	30 Apr
62	Rural Payments Agency	Public Admin	Newcastle	5 Feb
62	Passport Office	Public Admin	Durham City	22 May
55	South Tyneside College	Education	South Tyneside	3 May

Note: in the first half of 2010, all the reported job gains in industries with public service codes turned out to be in care homes except the Student Loan Company (+40 in Darlington).

Losses announced since July 1 include 230 by Durham County Council (from its Care homes) (29 July).

NHS losses are recorded in the TW table for losses (below).

Caution: these losses have not necessarily been confirmed.

Late news: Newcastle City Council announced (in response to the CSR) in October that it expects to make up to 1,000 job losses initially (by spring 2012), rising to up to 2,000 by 2014/15.

Job Gains in Tyne and Wear (July-Sept.).

Job Gains in Tyne and Wear (1,410 Job Gains)

Gains	Employer	Ref
200 jobs	Balfour Beatty , Quorum Business Park, North Tyneside. Construction. The company will open a customer support office at the QBP after taking up 41,000sq ft of office space. It also expects to add more jobs within three years. [Note: BB acquired Parsons Brinckerhoff in 2009, including Merz & McLellan. It is possible that these jobs are actually in engineering services.]	(J 14/9)
200 jobs	2Touch , Doxford Business Park in Sunderland Call centre operator. It is to create jobs to cope with soaring demand. This comes a year since 2Touch announced plans to recruit another 200 staff.	(Sd Echo 1/9)
56+27 jobs*	HLA Services , Boldon, South Tyneside Construction; air-conditioning. The company designs, assembles, installs and maintains	(J 17/9)

Gains	Employer	Ref
	a range of air conditioning, refrigeration, heating and ventilation systems. It has moved its 56-workforce from Sunderland and created a further 27 jobs.	
80 jobs	Newcastle Building Society , Newcastle. Financial services. New jobs for its Solutions business, after landing a new contract. It fell £4.9m into losses in the first six months, after a £4m restructuring charge. It closed four branches incl. Newcastle's West Road.	(J 31/7)
80 jobs (by Dec 2011)	Indigo Hotel , Newcastle city centre. Hotel. At the former Eagle Star House to open by Christmas 2011.	(J 19/8)
75 jobs (over five years)	Nissan , Washington in Sunderland. Car manufacturer. It will recruit 75 apprentices over the next five years. Their new model, the <i>Juke</i> , goes on sale in September. The Sunderland plant is expected to produce 100,000 in the next 12 months; the company has taken 22,500 advance orders from across Europe for its new model.	(J 27/8)
70 jobs (This year)	Winn Solicitors , Byker, Newcastle. Law firm, specialist in road traffic accident. Over the last year turnover grew by a third to £24m and its workforce increased from 160 to 230. It plans to add 10 new offices (sic) at its site in Byker and achieve £30m turnover.	(J 6/7)
60 jobs*	HarperCo , Hebburn in South Tyneside. Business training firm. It is setting up a base at Monkton Business Park.	(Sh. Gaz 14/8)
60 jobs*	DAV Development , Crawcrook, Gateshead. Care home operator. New opening.	(J 20/8)
60 jobs*	Helen McArdle , Hebburn in South Tyneside. Care home. Opening of a £4m care home at Hawthorn Court in St Aloysius View. It has been built on the site of the former Reyrolle building car park.	(J&H Gaz 18/9)
60 jobs* (by 2012-13)	Intercontinental Hotels Group (IHG) , Tyne & Wear. Hotel chain. The group is to create 3,000 jobs nationally with the opening of 35 new hotels in the next 2-3 years. [Est. 60 jobs in TW – Ed.]	(J 11/8)
50 jobs*	Apple , Metrocentre, Gateshead. Retail. The company has opened a store, its second in the region.	(J 23/9)
13 FT Jobs (and 25 SE PT over last 2yrs)	GoWarm , Boldon, South Tyneside Construction. Community interest company [set up in 2007] to provide home insulation. Its workforce has grown from 16 to 29 FT staff and 35 to 60 self-employed PT workers over the last two years. Turnover grew 43% to £5m as a result of nationwide expansion.	(J 12/7)
35 jobs*	Hodgson , Blaydon, Gateshead. Retailing (cars). It is opening an eight-storey display tower next to its Metrocentre Toyota site from October.	(J 25/9)
30 jobs*	Aspire Outsourcing , Newcastle city centre Call centre. It opened a base after winning a contract to handle telemarketing for a major UK utility company. It currently has 20 staff which will rise to 50 within the next few months. It plans to secure further work, hoping to increase staff to 250 within a few years.	(J 05/7)
22 jobs (inc. 20 jobs*)	Principle Leisure , Newcastle city centre Bar and restaurant operator (based in Washington, Sunderland). It plans to launch two new businesses in Newcastle: a retro-styled coffee and snack takeaway in Clayton Street, and a Popolo café-bar in Eldon Garden. Expansion in the NE will create around 44 jobs [TWRI est 22 jobs for TW] 20 jobs were created at Newcastle's Eldon Garden with the opening of Popolo café and restaurant.	(J 08/7) (J 1/10)
20 jobs	Fabricon Offshore Services , North Tyneside. Engineering services. It won a design contract for work to upgrade a North Sea oil rig. The contract with Talisman Energy UK also secures 60 jobs. The Journal said Fabricon Offshore is a subsidiary of Belgian energy company Fabricon GDF Suez.	(J 23/8)
20 Jobs (on six-month contracts)	NE1 , Newcastle. Public Admin.. Newcastle City Centre's Business Improvement District (BID) company. New jobs for its Street Ranger team. The new rangers will be employed on six-month contracts as part of the Government's Future Job Fund scheme.	(J 28/8)
[16 Jobs est in TW. 24	PriceWaterhouseCoopers , Newcastle offices. Business services (accountancy firm). It is planning to create 800 jobs and take on 1,200	(J 7/9)

Gains	Employer	Ref
graduates].	graduates to its UK workforce, despite a tough year. The firm employs over 300 at its Newcastle offices.	
16 Jobs*	Just Babies , Sunderland Other Services (nursery). New jobs for nursery which opened in August.	(J 17/8)
15 Jobs (at least)	Penn Elcom , Parsons Ind. Est. in Washington, Sunderland Electronics (manufacturer of rock concert equipment). New jobs for move into larger HQ premises.	(J 19/8)
12 jobs	Eutechnyx , Gateshead. Software (game designer). Contract from US giant Nascar. Further business wins from its two US offices as a result of this deal could increase the Tyneside workforce from 90 to 175.	(J 30/9)
12 Jobs (by 2013)	Weatherproofing Advisors , Newcastle Construction (roofing firm). It plans to take on 50 staff by 2013, including 12 at its Newcastle office. The introduction of its online roof management programme <i>Realm</i> has attracted 100 companies since April.	(J 13/8)
12 jobs (by 2013)	Bradley Hall , Newcastle. Estate agents. They have formed an alliance with a major construction and property consultancy Summers-Inman. It wants to expand across the region after recording a 30% rise in profits.	(J 1/9)
12 Jobs	Kent Connection , Blaydon, Gateshead. Transport (haulier). It is targeting new opportunities, aiming to turn its present turnover of £4m into £6m in the next 3 years, transporting fruit and vegetables.	(J 7/9)
12 Jobs	Acritas Global Research , Newcastle Business services (Research firm). It expects revenue to top £2m, due to increased interest by law firms in its Sharplegal surveys.	(J 23/7)
10 Jobs	Sevcon , Gateshead Electronics. New staff following a surge in orders for its new electric vehicle controller, Gen 4. It had revenues of \$19m for the nine months ending June. Profits for the period came in at \$0.42m compared to a loss of \$1.124m last year.	(J 30/7)
10 Jobs	Houghton International , Walker Riverside, Newcastle Electrical engineering (Producer of high-voltage coil products). New jobs following a number of orders. It had its best ever six months with sales up 20%. Downturn in the rail industry has led to orders, as operators seek to extend the life of their propulsion systems. It is looking to grow sales from £3m to £10m in four years. It has gained more than 400 customers and exports to over 20 countries. It was founded in 1984 in Houghton-le-Spring (Sunderland) and moved to Walker Riverside in 1998.	(J 4/8)
10 Jobs	Smithers Oasis , Washington, Sunderland Other Manufacturing (foam products for the floral and horticultural industries). New jobs to add to its 116 strong workforce at Sunderland. It has picked up business from Smithers Oasis in Denmark, which closed last year. Turnover has grown from £12m to £15.6m. The firm is owned by an American parent company.	(J 4/8)
10 Jobs	HM Plant , Hebburn, South Tyneside Hire company (construction vehicles). New jobs at its HQ. In the year ending March 2010, pre-tax profits rose from £1.4m to £1.5m and sales rose from £76m to £84.3m. Its workforce dropped from 137 to 112 during 2009. [Distributor for Hitachi.]	(J 25/8)
10 Jobs*	Franks the Flooring Store , Shiremoor, North Tyneside Retailing (Carpet store). Brand name I Love Carpets.	(J 24/8).
10 Jobs*	Franks the Flooring Store , Washington, Sunderland Retailing (Carpet store). Brand name I Love Carpets.	(J 24/8)

* new openings.

Job Losses in Tyne and Wear (950 Job Losses) (July-Sept.).

Caution: the public sector job losses have not necessarily been confirmed.

Losses	Employer	Ref
172 jobs (in TW)	NHS Trusts . Health (PCTs). 516 jobs are to be lost at NHS Trusts in the NE in a bid to save up to	(J 17/8)

Losses	Employer	Ref
	£27m annually. In Tyne and Wear PCTs, 50 jobs will be cut in Newcastle, 85 in Sunderland and 37 in South Tyneside.	
~ 100 Jobs	Northumbria University , in Newcastle city centre Higher education. Its managers anticipate a £200m national funding gap for Universities.	(J 1/7)
94 Jobs*	Monster Travel , Newcastle Travel firm. It has been put into administration with the loss of 94 jobs.	(J 20/7)
65 Jobs (in last 12 months)	Metnor , Newcastle. Construction and property firm. It saw sales fall by almost 50% to £38.4m in 2009. It lost £0.6m from profit of £1.6m a year earlier. Staff numbers fell from 258 to 193 in the last 12 months. It cut 100 jobs in 2008.	(J 07/7)
Est. 60 jobs (by 2014)	NHS North of Tyne [hospitals] , RVI and Freeman Hospitals, Newcastle. Hospitals. Across the Trust, 451 beds to be reduced, a 14% cut - based on a "confidential document" seen by the Journal. 166 jobs to be cut across the Trust, including in Northumberland.	(J 30/7)
60 Jobs	HarperCo , Newcastle. Business Services (training and consultancy group). It is moving its 60-strong workforce to Hebburn, South Tyneside. [Job gains in South Tyneside reported 14/8/10]	(J 18/8)
56 jobs*	HLA Services , Sunderland. Construction. It moved to South Tyneside.	(J 17/9)
50 jobs (by 2014)	NHS North of Tyne [hospitals] , North Tyneside General, North Tyneside. Hospitals. Across the Trust, 451 beds to be reduced, a 14% cut - based on a "confidential document" seen by the Journal. 166 jobs to be cut across the Trust, including in Northumberland.	(J 30/7)
44 jobs*	One NE , Newburn, Newcastle. Public Admin.. The Regional Development Agency has begun a voluntary redundancy programme as part of its closure process, with 44 staff leaving in September. It is due to close in March 2012.	(J 25/9)
Over 35 jobs	A1 Blinds , Washington, Sunderland. Other Manufacturing. It has cut jobs as its parent company A1 Venetian Blinds went into administration. Ten staff currently remain at its head office, fulfilling outstanding orders.	(J 2/9)
30 Jobs	Davy Roll , Gateshead Manufacturer of metal goods (steel rolls). It cut 10% of its workforce. Sales fell 40% to £28.9m in 2009. It won the Queen's Award for Enterprise in 2007.	(J 9/8)
~ 30 jobs	Isos Housing Group , Newcastle (and other Districts) Social Housing group. It owns 12,000 homes in the North East and intends to centralise its housing association operations in Newcastle. Under the plan, Milecastle Housing, Castle Morpeth Housing, Nomad E5 and Isos will amalgamate into a single body. The move will save Isos an estimated £500,000 a year from April 2011. One board will replace the existing four, reducing the number of board members from 38 to between 10 and 12, and the executive team will be reduced from eight to five.	(J 23/8)
20 jobs*	Flatbread Café , Newcastle and Gateshead (MetroCentre) Café. It closed its Newcastle and Gateshead's MetroCentre cafes.	(J 20/7)
15 jobs	Entec UK , Gosforth, Newcastle. Professional Services (environmental and engineering consultancy). It had cut 74 jobs (in total) across the UK. It blamed the recession for an £8m fall in revenues. [Entec is part of Amec, with 14 bases across the UK. It was originally spun out of Northumbrian Water - Ed.]	(J 30/9)
11 Jobs*	Fawthrop Mclanders , Jesmond, Newcastle Professional services (design firm). The company is going into voluntary liquidation.	(J2/7)
8 Jobs (est)	St James Security and Touchline Event Management , Gateshead Security firm. It has made (est.) 8 redundant [as 23 jobs lost at 3 locations] following sale to Churchill Contract Services [See Jobs saved].	(J24/7)
110 Jobs	BEL Valves, Newcastle Mechanical Engineering. Manufacturer of high-pressure valves. UK turnover fell from £24.4m to £15.9m in 2009/10. Its global turnover fell by £15m. Jobs lost apparently in 2009.	(J27/7)

Potential job gains in Tyne and Wear

Gains	Employer	Ref
150 jobs (inc. some in other shops etc.)	Sainsbury , North Hylton Road, Sunderland. Retailing. A £10m neighbourhood and shopping centre is expected. 'A major supermarket chain' is expected to sign contracts soon. [Other press reports say it is Sainsbury -Sd.] The development is due for completion by spring 2012. [A planning application has to be submitted.]	(J 23/7)
120 jobs	ASDA , Hebburn, South Tyneside. Supermarket chain. It hopes to open a new store creating up to 120 jobs. Work on the 15,000sq ft store will start in 2011 subject to planning permission.	(Sh Gaz 20/8)
50 jobs	Groundwork NE , Sunderland Construction. It hopes to create jobs in 2010. The company delivers regeneration programmes and environmental services to the City.	(J 29/6 & 3/7)
50 jobs	Homefix 24/7 , Middlesbrough, Teesside. Emergency call-out and repair business. It hopes to create jobs as it looks to expand into the Team Valley area in Gateshead.	(J 13/9)
40 jobs	North Tyneside Council, One NorthEast. Jobs could be created to dismantle the <i>RFA Oakleaf</i> on the Swan Hunter site in Wallsend. It is in talks over a contract (presumably for the MoD). It bought the yard, along with RDA One NE, for more than £9m in September 2009.	(J 21/7)
30 jobs	Aspers , Newcastle. Leisure services (casino). It expects to add staff to its 230-strong workforce. The casino chain also plans to open a number of multi-million pound sites across the UK, after seeing revenues grow by about £4m in the last year.	(J 07/7)
??	Onyx Scientific , Sunderland. Scientific (chemical) services. It has begun recruiting to cope with increased orders. The drug research company lost 10 jobs in 2009, after sales fell one-third, due to the lack of investment into biotech firms.	(J22/7)
(1,100 recruits, not gains, nationally in the next year)	Deloitte , [possibly in Newcastle]. Professional services. Set to recruit in excess of 1,100 graduates. Its application process for 2011 opened on July 1. It is still recruiting for autumn 2010 intake, following recent increases in graduate positions.	(J 07/7)

Job gains in The North East

Gains	Employer	Ref
500 jobs	Liberty Electric Cars , Cramlington, Northumberland. Automotive. It promised to create over 500 jobs at its base in Cramlington in Northumberland by 2012. The company has secured a £500,000 (sic) contract from the Chinese government to produce motors for 10,000 electric buses, possibly extending to 30,000. [The order is claimed by the company to be worth £500m – N. Echo.]	(J 28/9)
400 jobs	TAG Energy Solutions , Billingham in Teesside Offshore engineering. It expects to create up to 400 after securing the £20m required to build the UK's first offshore windmill tubular foundation manufacturing facility. The initial phase of development will create 100 jobs, to be followed by 300 jobs to service orders.	(J 28/9)
400 jobs	Former Ilva store, near the MetroCentre in Gateshead. Around 400 jobs could be created with plans to turn it into a supermarket and destination retail outlet. The 148,000sq ft building has been acquired by Trilogy Developments.	(J 30/9)
400 jobs	Arise Virtual Solutions , various areas. Virtual call centre provider. It is to recruit 400 home workers in the run-up to Christmas.	(J 27/8)
160 jobs	Homefix 24/7 , North East (mainly Stockton?). Emergency call-out and repair service. It has created 160 jobs as part of its nationwide expansion plans. The Middlesbrough based emergency call-out and repair business has opened a depot in Stockton, Teesside.	(J 13/9)
100 jobs	Tesco , Consett, Co. Durham.	(J 28/7)

Gains	Employer	Ref
	Supermarket. 250 jobs (apparently 100 net gain of new and part time jobs). The new store, on Genesis Way, is due in December next year. Tesco will close its store in Delves Lane, and 150 staff will be transferred to the new one.	
70 jobs	ThyssenKrupp Talent , Newton Aycliffe, Co. Durham. Automotive. It is creating 70 temporary jobs for a minimum of three months at its plant, which specialises in chassis products. It laid off around 160 staff during the recession.	(J 4/8)
60 jobs	Franks the Flooring Store , based in Co. Durham. Retailer. It is planning to create up to 60 jobs with a £1m expansion of its distribution centre and up to 10 new stores in the next year. It has already taken on 30 staff this year, after opening new stores in Washington [Sunderland], Ashington and Shiremoor [North Tyneside], taking the total number of employees to 150.	(Northern Echo 24/8)
50 jobs	Reay Security , Blyth, Northumberland. Security services. It aims to create jobs within two years after moving into larger premises. The firm has seen a rise in demand for its services over the past year. It currently employs 150 staff.	(J 15/9)
30 jobs	Alcan Aluminium , Lynemouth, Northumberland. Metal manufacture. Up to 30 jobs are being created Northumberland's biggest private employer. It expects to return to full production by the end of the year, for the first time in two years. Production was cut by a third in late 2008, when Alcan shut 128 of its 352 smelting pots. [Alcan is owned by Rio Tinto.]	(J 4/8)
20 jobs	Ramsdens Financial , North East. It plan to create jobs within 2 ½ years, with the opening of 20 stores. Five or six shops are planned in the NE and Yorkshire. [TWRI est. around 20 jobs in the NE]	(J 15/9)
12 jobs	CTC Marine , Darlington, Co. Durham. Offshore services. CTC has landed a £26m contract in Korea to carry out cable lay and ploughing activities.	(J 23/7)

Job losses in The North East

Losses	Employer	Ref
Up to 1,000 jobs	Northumberland County Council , based at Morpeth, Northumberland. Local authority. It is to cut jobs as it seeks to make £40m savings by 2012. In the last two years, it has shed 1,300 posts. It employs around 7,000 people.	(J 4/9)
250 jobs	Northumberland Foods , Amble, Northumberland. Food producer. It has gone into administration. The firm was formerly known as Cheviot Foods. {Acquired by Longbenton Foods, according to NERIP JGL}.	(J 20/8)
230 jobs	Durham County Council . Locations unknown within Co. Durham. 230 jobs will be lost as the council closes seven of its twelve care homes for elderly people.	(J 29/7)
67 jobs	Thompsons of Prudhoe , in Northumberland Demolition and haulage company. It has a fleet of 135 trucks. It will be moving away from skip and light waste. Only one employee came forward for voluntary redundancy.	(J 31/7)
25 jobs	Filtronic , Newton Aycliffe in Co. Durham Electronics. The company cut jobs in 2009, when its revenues halved to £15.6m at the year end in May, from £28.8m in 2009. Pre-tax profits fell from £2.2m in 2008/09 to a pre-tax loss of £1m. The electronics firm now employs 139.	(J 3/8)

Potential job gains in The North East

Gains	Employer	Ref
4,000 jobs	Tesco , North East. Supermarket chain. Its commitment to invest £400m in the NE could potentially create 4,000 jobs.	(J 15/9)
350 jobs	Whitton Care Group , NE. Care home operator. It is looking to complete 7 eco-friendly developments over the next 5 years, creating around 350 jobs. Each home will cost around £3m. [The first home is in Stockton, and will create 50 new jobs - N Echo. The Group is based in Durham. It is run by a couple who previously developed a chain of 28 homes.]	(J 09/07)

Gains	Employer	Ref
200 jobs	Corus , Middlesbrough, Teesside Steel maker. Over 200 jobs could be created as it unveiled plans to build a £31.5m manufacturing plant to produce steel foundation structures for windfarms.	(J 14/8)
???	Sahaviriya Steel Industries (SSI) , Steel producer. Thailand's biggest steel producer intends to pay £320m for Teesside Cast Products (TCP). Announcing a Memorandum of Understanding (MoU), both parties stressed the deal was not yet certain but emphasised its industrial and commercial logic. SSI would return TCP to its full 3.5m tonnes annual output of steel slab, a turnover of about £1bn a year. The entire output would be exported to Thailand. If successful the deal is expected to secure 700 jobs at the mothballed plant and to create a "significant" number of new jobs.	(FT 28/8)

Potential job losses / Jobs at risk

Losses	Employer	Ref
13,558 jobs (T&W)	Public sector , NE. Over 28,000 Public Sector jobs in the NE are at risk, according to analysis by the House of Commons library. Their estimates are 10,591 on Tyneside and 2,967 in Sunderland.	(J 23/7)
153 jobs	Armstrong World , Teesside. Manufacture of building products. Jobs at risk as the US company plans to close its Teesside factory by March 2011. A decision will be made at the end of the 90-day consultation period. It wants to exit the European flooring business. [Its factory in Gateshead will not be affected]	(J 20,21/8)
100 jobs in TW? [TWRI rough est.]	Connaught , all Districts Business services (property services). It has called in administrators. It employs 10,000 people, nationally. They are hopeful job losses would be minimised, as contracts transfer to alternative suppliers. Morgan Sindall, the construction group, is set to acquire the bulk of the social housing maintenance operations of Connaught, which would secure the future of 3,000 jobs.	(FT 8/9 & 10/9)
Est. 3?	Nationwide Building Society . Financial services. Its 150 agencies based in firms such as solicitors and estate agents are to close. This could impact on hundreds of workers. Nationwide's 850 branches are not expected to be affected by the decision; however some branches will close following recent takeovers. [There are four Nationwide branches/agencies in TW-Ed]	(J 6/9)
??	Connexions Northumberland . Public Admin (service for young people). It will have its funding cut by a quarter (£642,000) in October to help the county council find £10m of "in year" savings. Funding comes from a Government special grant which has been cut by 24% in-year. Redundancies among its 88-strong workforce are inevitable. Leeds-based Igen Ltd took over the running of the service in April 2008.	(J 2/8)

Jobs saved / secured

Saved	Employer	Ref
~ 650 jobs	Churchill Contract , Gateshead. Security services. 878 jobs (75% in the NE) have been saved following the purchase of St James Security and Touchline Event Management in Gateshead. St. James, last year made a pre-tax loss of £877,000.	(J 24/7)
250 jobs	SMD , Wallsend, North Tyneside. Mechanical engineering (Subsea vehicle maker). It has secured its 250-workforce for the next two years with a £40m contract from Norwegian oil giant Subsea7. SMD is to provide 30 underwater robots (WROVs). [SMD's yard is in Wallsend.]	(J 1/7)
20 jobs	Interflex , Sunderland. Food packaging. The jobs have been secured after it received a £90,000 Grant for Business Investment (GBI) from One NE. The firm was one of the few NE companies to have received a GBI in recent months. GBI is part-funded by the European Regional Development Fund 2007-13.	(J 3/9)