



# POPULATION IN NORTH TYNESIDE [based on revised MYEs 2002-2008]

This bulletin provides a summary of key demographic points for North Tyneside

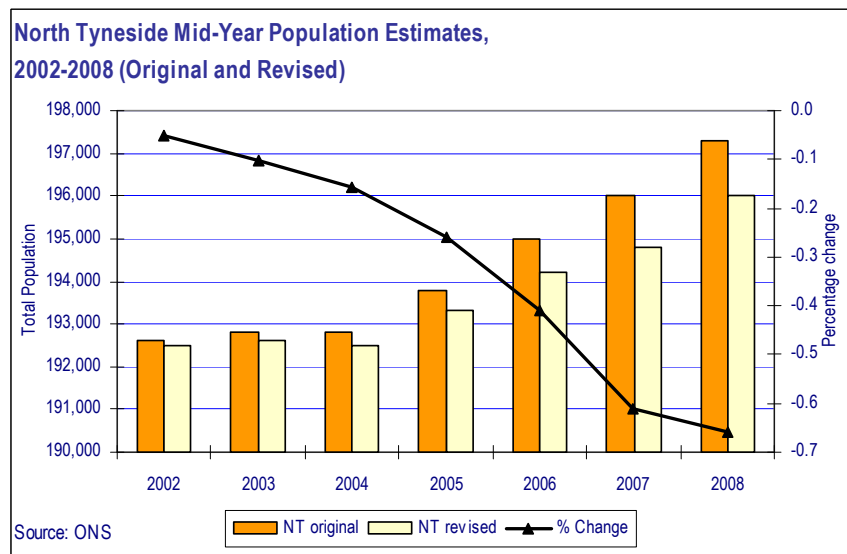
## KEY POINTS

ONS has published revised Mid-Year Estimates for 2002-2008. These data are now the official population data for England & Wales.

TWRI has produced bulletins for Tyne & Wear and each of the five Tyne & Wear Districts.

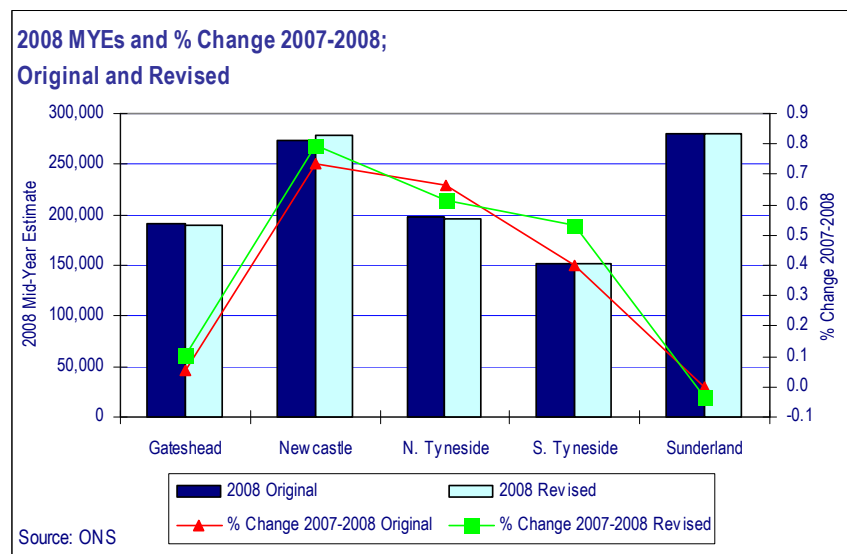
### Impact of revisions...

- Over the period 2002-2008 the population in North Tyneside grew by 1.8%, faster than growth of 0.8% in Tyne and Wear.
- The population of North Tyneside for 2008 has been revised down by 0.7% (or -1,300) in the latest data. In Tyne & Wear, the population was revised up by 0.2% (or +2,600).



### Baseline population...

- Between 2007 and 2008, the revised data show that **North Tyneside's population rose by 1,200 (or +0.6%)**, to 196,000. Among the Tyne & Wear Districts, population growth was fastest in Newcastle (at +0.8%) and slowest in Sunderland (slightly negative, at -0.04%).



### Natural change...

- From mid-2007 to mid-2008 natural change was positive in North Tyneside, at 200. In Tyne and Wear the figure was 1,300. [Based on ONS revised 2008 Components of Change.] These figures remain unchanged from the originally published data.

### Migration...

- ONS state that 'net migration & other changes' in North Tyneside in 2007-2008 were revised down by -200, to +1,000. The revised 2002-2008 data, including migration data, by Local Authority District is available from the ONS website via the following link <http://www.statistics.gov.uk/statbase/Product.asp?vlnk=15106>